

PUBLIC HEALTH COMMITTEE
April 24, 2012 – 9:00 AM
Building A – County Board Room

AGENDA

- I. Call to Order
- II. Executive Session: Personnel
- III. Approval of Minutes
 - A. March 27, 2012 Public Health Committee meeting
- II. Finance/Budget
 - A. Public Health Accounts Payable by G/L Distribution (Enc.)
 - B. Public Health Budget Revenue and Expenditure Reports (Enc.)
 - C. Health Department by Account Classification (Enc.)
 - D. Kane County Purchasing Card Information (Enc.)
 - E. Animal Control Department by Account Classification (Enc.)
- III. Public Comments on Agenda Items
- IV. A. Executive Director
 - 1. Review of Public Health Committee Flash Report (Enc.)
 - 2. Presentation: TB Update by Claire Dobbins-Director of Disease Prevention and Ryan Dowd-Executive Director of Hesed House
 - 3. **Resolution:** Amending 2012 Health Department Budget – TB (Enc.)
- B. Office of Emergency Management
 - 1. Monthly Report (Enc.)
 - 2. Monthly Statistics (Enc.)
- C. Animal Control
 - 1. March 2012 Monthly Statistics Report (Enc.)
 - 2. Report on Estimated revenues for 2012/loan repayment issue (Enc.)
 - 3. CACI Animal Services Survey (Enc.)
 - 4. **Resolution:** Authorizing Exception to the County Financial Policies Regarding Personnel Hiring and Replacement – Shelter Programs and Operations Manager (Formerly Kennel Manager) (Enc.)
 - 5. **Resolution:** Authorizing Exception to the County Financial Policies Regarding Personnel Hiring and Replacement – Animal Control Warden (Enc.)
 - 6. Potential Ordinance Changes
- V. Old Business
- VI. Executive Session
- VII. New Business
- VIII. Public Comments on Non-Agenda Items
- IX. Adjournment



Public Health Accounts Payable by GL Distribution

Payment Date Range 03/01/12 - 03/31/12

| Vendor | Invoice No. | Invoice Description | Status | Held Reason | Invoice Date | Due Date | G/L Date | Received Date | Payment Date | Invoice Amount |
|---|------------------|-------------------------------------|------------------------|-------------|--------------|------------|------------|--|------------------------|--------------------|
| Fund 001 - General Fund | | | | | | | | | | |
| Department 510 - Emergency Management Services | | | | | | | | | | |
| Sub-Department 510 - Emergency Management Services | | | | | | | | | | |
| Account 60000 - Office Supplies | | | | | | | | | | |
| 1372 - Quill Corporation | 1525194/c2519647 | EOC and Office toner Ctgs | Paid by Check # 320535 | | 03/06/2012 | 03/09/2012 | 03/09/2012 | | 03/26/2012 | 217.84 |
| | | | | | | | | Account 60000 - Office Supplies Totals | Invoice Transactions 1 | <u>\$217.84</u> |
| Account 60010 - Operating Supplies | | | | | | | | | | |
| 4526 - Fifth Third Bank | 2012-352 | Plaque tag engraving | Paid by EFT # 13273 | | 03/09/2012 | 03/09/2012 | 03/09/2012 | | 03/26/2012 | 9.00 |
| 1372 - Quill Corporation | 1525194/c2519647 | EOC and Office toner Ctgs | Paid by Check # 320535 | | 03/06/2012 | 03/09/2012 | 03/09/2012 | | 03/26/2012 | 440.98 |
| | | | | | | | | Account 60010 - Operating Supplies Totals | Invoice Transactions 2 | <u>\$449.98</u> |
| | | | | | | | | Sub-Department 510 - Emergency Management Services Totals | Invoice Transactions 3 | <u>\$667.82</u> |
| | | | | | | | | Department 510 - Emergency Management Services Totals | Invoice Transactions 3 | <u>\$667.82</u> |
| | | | | | | | | Fund 001 - General Fund Totals | Invoice Transactions 3 | <u>\$667.82</u> |
| Fund 290 - Animal Control | | | | | | | | | | |
| Department 500 - Animal Control | | | | | | | | | | |
| Sub-Department 500 - Animal Control | | | | | | | | | | |
| Account 50150 - Contractual/Consulting Services | | | | | | | | | | |
| 1615 - Jane L Davis DVM | 022912 | salary 12-2011/02/29/12 | Paid by EFT # 13100 | | 03/02/2012 | 03/02/2012 | 03/02/2012 | | 03/12/2012 | 5,622.50 |
| 8412 - The Agency Staffing | 62993 | Temp employees 3/2/2012 | Paid by EFT # 13368 | | 03/14/2012 | 03/14/2012 | 03/14/2012 | | 03/26/2012 | 1,844.70 |
| 8412 - The Agency Staffing | 63112 | Temp employees 3/09/2012 | Paid by EFT # 13368 | | 03/14/2012 | 03/14/2012 | 03/14/2012 | | 03/26/2012 | 3,481.50 |
| | | | | | | | | Account 50150 - Contractual/Consulting Services Totals | Invoice Transactions 3 | <u>\$10,948.70</u> |
| Account 50180 - Veterinarian Services | | | | | | | | | | |
| 3399 - Meadow View Veterinary Clinic | 02292012 | Veterinarian services February 2012 | Paid by Check # 320475 | | 03/08/2012 | 03/08/2012 | 03/08/2012 | | 03/26/2012 | 495.76 |
| | | | | | | | | Account 50180 - Veterinarian Services Totals | Invoice Transactions 1 | <u>\$495.76</u> |
| Account 52000 - Disposal and Water Softener Svcs | | | | | | | | | | |
| 3044 - DuPage Salt Co/Robert Lenz | 18424 | Solar salt 3/6/2012 | Paid by Check # 320361 | | 03/12/2012 | 03/12/2012 | 03/12/2012 | | 03/26/2012 | 22.83 |
| | | | | | | | | Account 52000 - Disposal and Water Softener Svcs Totals | Invoice Transactions 1 | <u>\$22.83</u> |
| Account 52020 - Repairs and Maintenance- Roads | | | | | | | | | | |
| 5762 - Waldschmidt & Associates | 10035 | Snow removal 2/27/2012 | Paid by Check # 320213 | | 03/05/2012 | 03/05/2012 | 03/05/2012 | | 03/12/2012 | 347.00 |
| 5762 - Waldschmidt & Associates | 10083 | Snow removal 3/5/2012 | Paid by Check # 320600 | | 03/16/2012 | 03/16/2012 | 03/16/2012 | | 03/26/2012 | 105.00 |
| | | | | | | | | Account 52020 - Repairs and Maintenance- Roads Totals | Invoice Transactions 2 | <u>\$452.00</u> |



Public Health Accounts Payable by GL Distribution

Payment Date Range 03/01/12 - 03/31/12

| Vendor | Invoice No. | Invoice Description | Status | Held Reason | Invoice Date | Due Date | G/L Date | Received Date | Payment Date | Invoice Amount | |
|---|--------------|--|------------------------|-------------|--------------|------------|------------|---------------|--|-------------------------|--------------------|
| Fund 290 - Animal Control | | | | | | | | | | | |
| Department 500 - Animal Control | | | | | | | | | | | |
| Sub-Department 500 - Animal Control | | | | | | | | | | | |
| Account 52140 - Repairs and Maint- Copiers | | | | | | | | | | | |
| 1119 - Gordon Flesch Company Inc | 1FM715 | Copy charges 1/25/12-2/25/2012 2/24/2012 | Paid by EFT # 13121 | | 03/05/2012 | 03/05/2012 | 03/05/2012 | | 03/12/2012 | 43.46 | |
| | | | | | | | | | Account 52140 - Repairs and Maint- Copiers Totals | Invoice Transactions 1 | <u>43.46</u> |
| Account 53130 - General Association Dues | | | | | | | | | | | |
| 4526 - Fifth Third Bank | 0093zz | Dues office supplies Lab. testing | Paid by EFT # 13273 | | 03/15/2012 | 03/15/2012 | 03/15/2012 | | 03/26/2012 | 540.00 | |
| | | | | | | | | | Account 53130 - General Association Dues Totals | Invoice Transactions 1 | <u>540.00</u> |
| Account 60000 - Office Supplies | | | | | | | | | | | |
| 3578 - Warehouse Direct Office Products | 1477363 | Office supplies 3/2/2012 | Paid by EFT # 13209 | | 03/05/2012 | 03/05/2012 | 03/05/2012 | | 03/12/2012 | 216.56 | |
| 4526 - Fifth Third Bank | 0093zz | Dues office supplies Lab. testing | Paid by EFT # 13273 | | 03/15/2012 | 03/15/2012 | 03/15/2012 | | 03/26/2012 | 30.96 | |
| 4526 - Fifth Third Bank | 4206399b | Pet supplies office supplies | Paid by EFT # 13273 | | 03/16/2012 | 03/16/2012 | 03/16/2012 | | 03/26/2012 | 31.96 | |
| 1024 - Ice Mountain Direct | 2B8105609732 | Bottled water 2/12/12-2/29/12 | Paid by Check # 320424 | | 03/08/2012 | 03/08/2012 | 03/08/2012 | | 03/26/2012 | 16.03 | |
| 6349 - The Office Pal | 41280-IN | Dell toner 2/27/2012 | Paid by Check # 320584 | | 03/12/2012 | 03/12/2012 | 03/12/2012 | | 03/26/2012 | 101.00 | |
| | | | | | | | | | Account 60000 - Office Supplies Totals | Invoice Transactions 5 | <u>\$396.51</u> |
| Account 60140 - Animal Care Supplies | | | | | | | | | | | |
| 4526 - Fifth Third Bank | 4206399 | Medicines 2/27/2012 | Paid by EFT # 13109 | | 03/05/2012 | 03/05/2012 | 03/05/2012 | | 03/12/2012 | 10.48 | |
| 4526 - Fifth Third Bank | 6399B | Pet Food 2/29/2012 | Paid by EFT # 13273 | | 03/12/2012 | 03/12/2012 | 03/12/2012 | | 03/26/2012 | 53.63 | |
| 4526 - Fifth Third Bank | 0093zz | Dues office supplies Lab. testing | Paid by EFT # 13273 | | 03/15/2012 | 03/15/2012 | 03/15/2012 | | 03/26/2012 | 134.50 | |
| 4526 - Fifth Third Bank | 4206399b | Pet supplies office supplies | Paid by EFT # 13273 | | 03/16/2012 | 03/16/2012 | 03/16/2012 | | 03/26/2012 | 243.60 | |
| 3031 - Midwest Veterinary Supply Inc | 3715612 | Animal supplies 3/7/2012 | Paid by Check # 320481 | | 03/12/2012 | 03/12/2012 | 03/12/2012 | | 03/26/2012 | 20.47 | |
| | | | | | | | | | Account 60140 - Animal Care Supplies Totals | Invoice Transactions 5 | <u>\$462.68</u> |
| Account 60250 - Medical Supplies and Drugs | | | | | | | | | | | |
| 4975 - Vortech Pharmaceuticals LTD | 98634 | Drugs Fatal Plus Solution 2/17/2012 | Paid by Check # 320211 | | 03/05/2012 | 03/05/2012 | 03/05/2012 | | 03/12/2012 | 220.78 | |
| | | | | | | | | | Account 60250 - Medical Supplies and Drugs Totals | Invoice Transactions 1 | <u>\$220.78</u> |
| Account 63000 - Utilities- Natural Gas | | | | | | | | | | | |
| 2253 - Nicor Gas | 05588297373z | Nicor gas 2/2/12-3/6/2012 3/6/2012 | Paid by Check # 320497 | | 03/12/2012 | 03/12/2012 | 03/12/2012 | | 03/26/2012 | 1,087.79 | |
| | | | | | | | | | Account 63000 - Utilities- Natural Gas Totals | Invoice Transactions 1 | <u>\$1,087.79</u> |
| | | | | | | | | | Sub-Department 500 - Animal Control Totals | Invoice Transactions 21 | <u>\$14,670.51</u> |



Public Health Accounts Payable by GL Distribution

Payment Date Range 03/01/12 - 03/31/12

| Vendor | Invoice No. | Invoice Description | Status | Held Reason | Invoice Date | Due Date | G/L Date | Received Date | Payment Date | Invoice Amount |
|--|---------------|--|------------------------|-------------|--------------|------------|----------------------|---------------|--------------|----------------|
| Fund 290 - Animal Control | | | | | | | | | | |
| Department 500 - Animal Control Totals | | | | | | | Invoice Transactions | 21 | | \$14,670.51 |
| Fund 290 - Animal Control Totals | | | | | | | Invoice Transactions | 21 | | \$14,670.51 |
| Fund 350 - County Health | | | | | | | | | | |
| Department 580 - Health | | | | | | | | | | |
| Sub-Department 580 - Community Health Resources | | | | | | | | | | |
| Account 50150 - Contractual/Consulting Services | | | | | | | | | | |
| 1271 - Frank's Employment Inc (Frank's Temporaries) | 80880 | HEALTH- FRANK'S | Paid by EFT # 13280 | | 02/28/2012 | 03/09/2012 | 03/09/2012 | | 03/26/2012 | 1,008.00 |
| 1271 - Frank's Employment Inc (Frank's Temporaries) | 80911 | HEALTH - FRANK'S | Paid by EFT # 13280 | | 03/06/2012 | 03/09/2012 | 03/09/2012 | | 03/26/2012 | 1,260.00 |
| 1271 - Frank's Employment Inc (Frank's Temporaries) | 80942 | Health- Franks | Paid by EFT # 13280 | | 03/15/2012 | 03/15/2012 | 03/15/2012 | | 03/26/2012 | 1,260.00 |
| 8369 - MarMason Consulting LLC | 260 | HEALTH- MARMASOM CONSULTING | Paid by EFT # 13320 | | 01/31/2012 | 03/09/2012 | 03/09/2012 | | 03/26/2012 | 2,978.91 |
| 2575 - Northern Illinois University | 31312 | Health-NIU Grant #G5B70060 | Paid by Check # 320515 | | 03/13/2012 | 03/15/2012 | 03/15/2012 | | 03/26/2012 | 1,500.00 |
| 7512 - Protocol Global Solutions Inc (NCO Customer Mgmt) | 10811987 | HEALTH-Protocol Global Solutions Inc (NCO Customer Mgmt) | Paid by Check # 320534 | | 02/29/2012 | 03/15/2012 | 03/15/2012 | | 03/26/2012 | 500.00 |
| Account 50150 - Contractual/Consulting Services Totals | | | | | | | Invoice Transactions | 6 | | \$8,506.91 |
| Account 52000 - Disposal and Water Softener Svcs | | | | | | | | | | |
| 2225 - Cintas Corp #344 | DD25140961 | Health-Cintas Aurora | Paid by Check # 320295 | | 03/09/2012 | 03/15/2012 | 03/15/2012 | | 03/26/2012 | 47.00 |
| 2225 - Cintas Corp #344 | DD25140962 | Health-Cintas Elgin | Paid by Check # 320294 | | 03/09/2012 | 03/15/2012 | 03/15/2012 | | 03/26/2012 | 35.00 |
| 1024 - Ice Mountain Direct | 02B0122921927 | HEALTH- ICE MOUNTIAN DIRECT | Paid by Check # 320417 | | 02/29/2012 | 03/09/2012 | 03/09/2012 | | 03/26/2012 | 16.03 |
| 1024 - Ice Mountain Direct | 02B0122978521 | HEALTH- ICE MOUNTIAN DIRECT | Paid by Check # 320418 | | 02/29/2012 | 03/09/2012 | 03/09/2012 | | 03/26/2012 | 95.96 |
| Account 52000 - Disposal and Water Softener Svcs Totals | | | | | | | Invoice Transactions | 4 | | \$193.99 |
| Account 52010 - Janitorial Services | | | | | | | | | | |
| 8196 - PCI Servicies Inc (DBA Peterson Cleaning Inc) | 22157 | HEALTH- PETERSON CLEANING | Paid by EFT # 13345 | | 03/01/2012 | 03/09/2012 | 03/09/2012 | | 03/26/2012 | 156.00 |
| Account 52010 - Janitorial Services Totals | | | | | | | Invoice Transactions | 1 | | \$156.00 |
| Account 52110 - Repairs and Maint- Buildings | | | | | | | | | | |
| 7955 - Cipher Technology Solutions Inc (CTS) | 2012-338 | HEALTH-Cipher Technology Solutions Inc (CTS) | Paid by Check # 320296 | | 03/01/2012 | 03/09/2012 | 03/09/2012 | | 03/26/2012 | 45.00 |
| 4009 - Smitherreen Pest Management Services | 575216 | HEALTH- SMITHERREEN | Paid by Check # 320566 | | 02/28/2012 | 03/09/2012 | 03/09/2012 | | 03/26/2012 | 55.00 |
| Account 52110 - Repairs and Maint- Buildings Totals | | | | | | | Invoice Transactions | 2 | | \$100.00 |



Public Health Accounts Payable by GL Distribution

Payment Date Range 03/01/12 - 03/31/12

| Vendor | Invoice No. | Invoice Description | Status | Held Reason | Invoice Date | Due Date | G/L Date | Received Date | Payment Date | Invoice Amount |
|--|---------------|--|------------------------|-------------|--------------|------------|------------|---|------------------------|-----------------|
| Fund 350 - County Health | | | | | | | | | | |
| Department 580 - Health | | | | | | | | | | |
| Sub-Department 580 - Community Health Resources | | | | | | | | | | |
| Account 52240 - Repairs and Maint- Office Equip | | | | | | | | | | |
| 2291 - Chicago Office Technology Group (COTG) | 104291 | HEALTH- Chicago Office Technology Group (COTG) | Paid by EFT # 13245 | | 02/29/2012 | 03/09/2012 | 03/09/2012 | | 03/26/2012 | 104.85 |
| 1119 - Gordon Flesch Company Inc | 1FU941 | HEALTH- GORDON FLESCH | Paid by EFT # 13284 | | 03/05/2012 | 03/09/2012 | 03/09/2012 | | 03/26/2012 | 205.29 |
| | | | | | | | | Account 52240 - Repairs and Maint- Office Equip Totals | Invoice Transactions 2 | <u>\$310.14</u> |
| Account 53040 - General Advertising | | | | | | | | | | |
| 4526 - Fifth Third Bank | 2012-00000580 | Health-BJ88442-3/5/12 | Paid by EFT # 13273 | | 03/05/2012 | 03/15/2012 | 03/15/2012 | | 03/26/2012 | 500.00 |
| | | | | | | | | Account 53040 - General Advertising Totals | Invoice Transactions 1 | <u>\$500.00</u> |
| Account 53110 - Employee Training | | | | | | | | | | |
| 4526 - Fifth Third Bank | 2012-00000580 | Health-BJ88442-3/5/12 | Paid by EFT # 13273 | | 03/05/2012 | 03/15/2012 | 03/15/2012 | | 03/26/2012 | 50.00 |
| | | | | | | | | Account 53110 - Employee Training Totals | Invoice Transactions 1 | <u>\$50.00</u> |
| Account 53120 - Employee Mileage Expense | | | | | | | | | | |
| 4462 - Cynthia Biedrzycki | 03052012 | Mileage 2/1-2/28/12 | Paid by EFT # 13232 | | 03/13/2012 | 03/13/2012 | 03/13/2012 | | 03/26/2012 | 5.44 |
| 4496 - Jennifer Fearday | 03022012 | Mileage 1/11-2/21/12 | Paid by Check # 320375 | | 03/06/2012 | 03/06/2012 | 03/06/2012 | | 03/26/2012 | 77.70 |
| | | | | | | | | Account 53120 - Employee Mileage Expense Totals | Invoice Transactions 2 | <u>\$83.14</u> |
| Account 60010 - Operating Supplies | | | | | | | | | | |
| 4526 - Fifth Third Bank | 2012-00000580 | Health-BJ88442-3/5/12 | Paid by EFT # 13273 | | 03/05/2012 | 03/15/2012 | 03/15/2012 | | 03/26/2012 | 22.50 |
| | | | | | | | | Account 60010 - Operating Supplies Totals | Invoice Transactions 1 | <u>\$22.50</u> |
| Account 60050 - Books and Subscriptions | | | | | | | | | | |
| 4526 - Fifth Third Bank | 2012-00000580 | Health-BJ88442-3/5/12 | Paid by EFT # 13273 | | 03/05/2012 | 03/15/2012 | 03/15/2012 | | 03/26/2012 | 24.00 |
| | | | | | | | | Account 60050 - Books and Subscriptions Totals | Invoice Transactions 1 | <u>\$24.00</u> |
| Account 63010 - Utilities- Electric | | | | | | | | | | |
| 1054 - ComEd | 2-24-2012 | HEALTH- COMED ACCT# 6303002062 | Paid by Check # 320317 | | 02/24/2012 | 03/09/2012 | 03/09/2012 | | 03/26/2012 | 163.99 |
| 1054 - ComEd | 2012-00000581 | Health-ComEd 8087480026 | Paid by Check # 320317 | | 03/13/2012 | 03/15/2012 | 03/15/2012 | | 03/26/2012 | 34.29 |
| 1054 - ComEd | 2012-00000582 | Health-ComEd 8087493023 | Paid by Check # 320317 | | 03/13/2012 | 03/15/2012 | 03/15/2012 | | 03/26/2012 | 52.15 |
| 1054 - ComEd | 2012-00000583 | Health-ComEd 8087485021 | Paid by Check # 320317 | | 03/13/2012 | 03/15/2012 | 03/15/2012 | | 03/26/2012 | 69.80 |
| 1054 - ComEd | 2012-00000584 | Health-ComEd 8087484015 | Paid by Check # 320317 | | 03/13/2012 | 03/15/2012 | 03/15/2012 | | 03/26/2012 | 103.90 |
| | | | | | | | | Account 63010 - Utilities- Electric Totals | Invoice Transactions 5 | <u>\$424.13</u> |



Public Health Accounts Payable by GL Distribution

Payment Date Range 03/01/12 - 03/31/12

| Vendor | Invoice No. | Invoice Description | Status | Held Reason | Invoice Date | Due Date | G/L Date | Received Date | Payment Date | Invoice Amount |
|--|--------------|--|------------------------|-------------|--------------|------------|---|---------------|-------------------------|--------------------|
| Fund 350 - County Health | | | | | | | | | | |
| Department 580 - Health | | | | | | | | | | |
| Sub-Department 580 - Community Health Resources | | | | | | | | | | |
| Account 64000 - Telephone | | | | | | | | | | |
| 1057 - AT&T | 630R06311002 | HEALTH- AT&T ACCT# | Paid by Check | | 02/16/2012 | 03/09/2012 | 03/09/2012 | | 03/26/2012 | 26.05 |
| | 1 | 630R0631100441 | # 320249 | | | | | | | |
| 2579 - Premiere Global / Xpedite Systems LLC | 1203750577 | Health-Premiere Global / Xpedite Systems LLC | Paid by Check # 320530 | | 02/29/2012 | 03/15/2012 | 03/15/2012 | | 03/26/2012 | 1,648.21 |
| | | | | | | | Account 64000 - Telephone Totals | | Invoice Transactions 2 | \$1,674.26 |
| | | | | | | | Sub-Department 580 - Community Health Resources Totals | | Invoice Transactions 28 | \$12,045.07 |
| Sub-Department 630 - Division of Health Promotion | | | | | | | | | | |
| Account 50150 - Contractual/Consulting Services | | | | | | | | | | |
| 3192 - Balcom-Vetillo Design Inc | Jan.20,2012 | Health - Balcom-Vetillo Design Inc. | Paid by Check # 320259 | | 01/20/2012 | 03/15/2012 | 03/15/2012 | | 03/26/2012 | 990.00 |
| 8359 - Marissa Cassin | 0216124 | HEALTH- MARISSA CASSIN | Paid by Check # 320285 | | 03/08/2012 | 03/15/2012 | 03/15/2012 | | 03/26/2012 | 35.00 |
| 6610 - Maxwell Partners LLC | 2-27-2012 | HEALTH-MAXWELL PARTNERS | Paid by Check # 320473 | | 02/27/2012 | 03/09/2012 | 03/09/2012 | | 03/26/2012 | 1,311.50 |
| 6610 - Maxwell Partners LLC | Mar. 12.2012 | Health- Maxwell Partners, LLC | Paid by Check # 320473 | | 03/12/2012 | 03/15/2012 | 03/15/2012 | | 03/26/2012 | 1,139.50 |
| 8358 - Lyndi M. Scholl | 0216121 | HEALTH- LYNDI SCHOLL | Paid by Check # 320551 | | 03/08/2012 | 03/15/2012 | 03/15/2012 | | 03/26/2012 | 35.00 |
| 8415 - Megan L. Scott | 0216123-1 | Health- Scott Megan | Paid by EFT # 13360 | | 03/15/2012 | 03/15/2012 | 03/15/2012 | | 03/26/2012 | 45.00 |
| 8414 - Chris Young | 0216123 | HEALTH- CHRIS YOUNG | Paid by Check # 320611 | | 03/08/2012 | 03/15/2012 | 03/15/2012 | | 03/26/2012 | 75.00 |
| | | | | | | | Account 50150 - Contractual/Consulting Services Totals | | Invoice Transactions 7 | \$3,631.00 |
| Account 53110 - Employee Training | | | | | | | | | | |
| 4632 - Michael Isaacson | 03052012 | Mileage 1/6-2/29/12 | Paid by EFT # 13302 | | 03/13/2012 | 03/13/2012 | 03/13/2012 | | 03/26/2012 | 49.00 |
| 4340 - June C. Wooten | 03092012 | mileage 2/1- 2/28/12 | Paid by Check # 320610 | | 03/13/2012 | 03/13/2012 | 03/13/2012 | | 03/26/2012 | 2.25 |
| | | | | | | | Account 53110 - Employee Training Totals | | Invoice Transactions 2 | \$51.25 |



Public Health Accounts Payable by GL Distribution

Payment Date Range 03/01/12 - 03/31/12

| Vendor | Invoice No. | Invoice Description | Status | Held Reason | Invoice Date | Due Date | G/L Date | Received Date | Payment Date | Invoice Amount |
|--|---------------|--------------------------|------------------------|-------------|--------------|------------|------------|--|-------------------------|-------------------|
| Fund 350 - County Health | | | | | | | | | | |
| Department 580 - Health | | | | | | | | | | |
| Sub-Department 630 - Division of Health Promotion | | | | | | | | | | |
| Account 53120 - Employee Mileage Expense | | | | | | | | | | |
| 4648 - Daniel Eder | 03022012 | Mileage 1/4-1/31/12 | Paid by Check # 320363 | | 03/13/2012 | 03/13/2012 | 03/13/2012 | | 03/26/2012 | 76.03 |
| 4648 - Daniel Eder | 03022012.1 | Mileage 2/1-2/16/12 | Paid by Check # 320363 | | 03/13/2012 | 03/13/2012 | 03/13/2012 | | 03/26/2012 | 66.60 |
| 4632 - Michael Isaacson | 03052012 | Mileage 1/6-2/29/12 | Paid by EFT # 13302 | | 03/13/2012 | 03/13/2012 | 03/13/2012 | | 03/26/2012 | 207.02 |
| 5043 - Kristin Johnson | 03062012 | Mileage 2/1-2/29/12 | Paid by EFT # 13306 | | 03/13/2012 | 03/13/2012 | 03/13/2012 | | 03/26/2012 | 125.99 |
| 4650 - Lenora Miller | 03122012 | Mileage 1/19-2/29/12 | Paid by EFT # 13335 | | 03/13/2012 | 03/13/2012 | 03/13/2012 | | 03/26/2012 | 177.04 |
| 4342 - Neal Molnar | 03062012 | Mileage 2/1-2/29/12 | Paid by Check # 320486 | | 03/13/2012 | 03/13/2012 | 03/13/2012 | | 03/26/2012 | 95.46 |
| 4491 - Beverly Peel | 03062012 | Mileage 2/1-2/29/12 | Paid by EFT # 13346 | | 03/13/2012 | 03/13/2012 | 03/13/2012 | | 03/26/2012 | 65.49 |
| 4641 - Liz Swanson | 03052012 | Mileage 2/1- 2/29/12 | Paid by Check # 320579 | | 03/13/2012 | 03/13/2012 | 03/13/2012 | | 03/26/2012 | 10.00 |
| 4499 - Sharon Verzal | 03152012 | Mileage 2/23-2/28/12 | Paid by EFT # 13373 | | 03/13/2012 | 03/13/2012 | 03/13/2012 | | 03/26/2012 | 53.84 |
| 4340 - June C. Wooten | 03062012 | Mileage 1/4-1/31/12 | Paid by Check # 320610 | | 03/13/2012 | 03/13/2012 | 03/13/2012 | | 03/26/2012 | 79.37 |
| 4340 - June C. Wooten | 03062012.1 | Mileage 12/1-12/16/11 | Paid by Check # 320610 | | 03/13/2012 | 03/13/2012 | 03/13/2012 | | 03/26/2012 | 29.42 |
| 4340 - June C. Wooten | 03092012 | mileage 2/1- 2/28/12 | Paid by Check # 320610 | | 03/13/2012 | 03/13/2012 | 03/13/2012 | | 03/26/2012 | 67.16 |
| | | | | | | | | Account 53120 - Employee Mileage Expense Totals | Invoice Transactions 12 | <u>\$1,053.42</u> |
| Account 53130 - General Association Dues | | | | | | | | | | |
| 4526 - Fifth Third Bank | 2012-00000580 | Health-BJ88442-3/5/12 | Paid by EFT # 13273 | | 03/05/2012 | 03/15/2012 | 03/15/2012 | | 03/26/2012 | 135.00 |
| | | | | | | | | Account 53130 - General Association Dues Totals | Invoice Transactions 1 | <u>\$135.00</u> |
| Account 60000 - Office Supplies | | | | | | | | | | |
| 3578 - Warehouse Direct Office Products | 146705-0 | HEALTH-WAREHOUSE DIRECT | Paid by Check # 320601 | | 02/28/2012 | 03/09/2012 | 03/09/2012 | | 03/26/2012 | 74.30 |
| | | | | | | | | Account 60000 - Office Supplies Totals | Invoice Transactions 1 | <u>\$74.30</u> |
| Account 60010 - Operating Supplies | | | | | | | | | | |
| 4526 - Fifth Third Bank | 2012-00000580 | Health-BJ88442-3/5/12 | Paid by EFT # 13273 | | 03/05/2012 | 03/15/2012 | 03/15/2012 | | 03/26/2012 | 192.63 |
| 3578 - Warehouse Direct Office Products | 1485364-0 | Health- Warehouse Direct | Paid by Check # 320601 | | 03/09/2012 | 03/15/2012 | 03/15/2012 | | 03/26/2012 | 15.61 |
| | | | | | | | | Account 60010 - Operating Supplies Totals | Invoice Transactions 2 | <u>\$208.24</u> |



Public Health Accounts Payable by GL Distribution

Payment Date Range 03/01/12 - 03/31/12

| Vendor | Invoice No. | Invoice Description | Status | Held Reason | Invoice Date | Due Date | G/L Date | Received Date | Payment Date | Invoice Amount |
|--|---------------|---|------------------------|-------------|--------------|------------|---|---------------|-------------------------|--------------------|
| Fund 350 - County Health | | | | | | | | | | |
| Department 580 - Health | | | | | | | | | | |
| Sub-Department 630 - Division of Health Promotion | | | | | | | | | | |
| Account 63040 - Fuel- Vehicles | | | | | | | | | | |
| 4526 - Fifth Third Bank | 2012-00000580 | Health-BJ88442-3/5/12 | Paid by EFT # 13273 | | 03/05/2012 | 03/15/2012 | 03/15/2012 | | 03/26/2012 | 254.62 |
| | | | | | | | Account 63040 - Fuel- Vehicles Totals | | Invoice Transactions 1 | <u>\$254.62</u> |
| | | | | | | | Sub-Department 630 - Division of Health Promotion Totals | | Invoice Transactions 26 | <u>\$5,407.83</u> |
| Sub-Department 631 - Division of Disease Prevention | | | | | | | | | | |
| Account 50150 - Contractual/Consulting Services | | | | | | | | | | |
| 1454 - Dreyer Medical Inc. | 2012-00000578 | Health-Huston March 2012 | Paid by EFT # 13266 | | 03/15/2012 | 03/15/2012 | 03/15/2012 | | 03/26/2012 | 1,500.00 |
| 1454 - Dreyer Medical Inc. | 2012-00000579 | Health-Verma March 2012 | Paid by EFT # 13266 | | 03/15/2012 | 03/15/2012 | 03/15/2012 | | 03/26/2012 | 1,500.00 |
| 1271 - Frank's Employment Inc (Frank's Temporaries) | 80880 | HEALTH- FRANK'S | Paid by EFT # 13280 | | 02/28/2012 | 03/09/2012 | 03/09/2012 | | 03/26/2012 | 36.00 |
| 1271 - Frank's Employment Inc (Frank's Temporaries) | 80911 | HEALTH - FRANK'S | Paid by EFT # 13280 | | 03/06/2012 | 03/09/2012 | 03/09/2012 | | 03/26/2012 | 36.00 |
| 1271 - Frank's Employment Inc (Frank's Temporaries) | 80942 | Health- Franks | Paid by EFT # 13280 | | 03/15/2012 | 03/15/2012 | 03/15/2012 | | 03/26/2012 | 36.00 |
| 1561 - Midwest Environmental Consulting Services Inc | 12-174 | HEALTH- MIDWEST ENVIRONMENTAL | Paid by EFT # 13333 | | 03/07/2012 | 03/15/2012 | 03/15/2012 | | 03/26/2012 | 125.00 |
| 1561 - Midwest Environmental Consulting Services Inc | 12-175 | HEALTH- Midwest Environmental Consulting Services Inc | Paid by EFT # 13333 | | 03/07/2012 | 03/15/2012 | 03/15/2012 | | 03/26/2012 | 350.00 |
| 5445 - Pacific Interpreters | 107231 | HEALTH- Pacific Interpreters | Paid by EFT # 13341 | | 02/29/2012 | 03/15/2012 | 03/15/2012 | | 03/26/2012 | 88.50 |
| 3065 - PADS Inc DBA Hesed House Inc | 730 | Health- Pads Hesed House | Paid by EFT # 13342 | | 01/31/2012 | 03/15/2012 | 03/15/2012 | | 03/26/2012 | 4,999.85 |
| 3065 - PADS Inc DBA Hesed House Inc | 741 | Health- PADS Inc DBA Hesed House Inc | Paid by EFT # 13342 | | 02/29/2012 | 03/15/2012 | 03/15/2012 | | 03/26/2012 | 4,999.83 |
| | | | | | | | Account 50150 - Contractual/Consulting Services Totals | | Invoice Transactions 10 | <u>\$13,671.18</u> |
| Account 50470 - X-Rays | | | | | | | | | | |
| 4656 - Valley Imaging Consultants, LLC | 194886 | HEALTH-Valley Imaging Consultants, LLC | Paid by Check # 320596 | | 01/15/2012 | 03/15/2012 | 03/15/2012 | | 03/26/2012 | 48.00 |
| | | | | | | | Account 50470 - X-Rays Totals | | Invoice Transactions 1 | <u>\$48.00</u> |
| Account 52160 - Repairs and Maint- Equipment | | | | | | | | | | |
| 7616 - Marberry Cleaners | 13134 | Health- Marberry cleaners | Paid by Check # 320471 | | 03/05/2012 | 03/15/2012 | 03/15/2012 | | 03/26/2012 | 39.90 |
| | | | | | | | Account 52160 - Repairs and Maint- Equipment Totals | | Invoice Transactions 1 | <u>\$39.90</u> |
| Account 53110 - Employee Training | | | | | | | | | | |
| 4349 - Daisy Viyuoh | 03062012 | Mileage 2/1- 2/29/12 & Spring Health Conf. | Paid by EFT # 13374 | | 03/13/2012 | 03/13/2012 | 03/13/2012 | | 03/26/2012 | 31.85 |
| | | | | | | | Account 53110 - Employee Training Totals | | Invoice Transactions 1 | <u>\$31.85</u> |



Public Health Accounts Payable by GL Distribution

Payment Date Range 03/01/12 - 03/31/12

| Vendor | Invoice No. | Invoice Description | Status | Held Reason | Invoice Date | Due Date | G/L Date | Received Date | Payment Date | Invoice Amount |
|--|-------------|--|------------------------|-------------|--------------|------------|---|---------------|--------------------------|--------------------|
| Fund 350 - County Health | | | | | | | | | | |
| Department 580 - Health | | | | | | | | | | |
| Sub-Department 631 - Division of Disease Prevention | | | | | | | | | | |
| Account 53120 - Employee Mileage Expense | | | | | | | | | | |
| 4468 - Juanita Gonzalez | 03122012 | Mileage 2/8-2/29/12 | Paid by Check # 320392 | | 03/13/2012 | 03/13/2012 | 03/13/2012 | | 03/26/2012 | 47.73 |
| 4351 - Cheryl Kane | 03082012 | Mileage 12/1-3/8/12 | Paid by Check # 320453 | | 03/13/2012 | 03/13/2012 | 03/13/2012 | | 03/26/2012 | 121.55 |
| 4650 - Lenora Miller | 03122012 | Mileage 1/19-2/29/12 | Paid by EFT # 13335 | | 03/13/2012 | 03/13/2012 | 03/13/2012 | | 03/26/2012 | 16.10 |
| 4460 - Silvia Tijerina | 03142012 | Mileage 1/27/12 | Paid by Check # 320586 | | 03/13/2012 | 03/13/2012 | 03/13/2012 | | 03/26/2012 | 19.70 |
| 4460 - Silvia Tijerina | 03142012.1 | Mileage 3/2- 3/6/12 | Paid by Check # 320586 | | 03/13/2012 | 03/13/2012 | 03/13/2012 | | 03/26/2012 | 21.31 |
| 4349 - Daisy Viyuoh | 03062012 | Mileage 2/1- 2/29/12 & Spring Health Conf. | Paid by EFT # 13374 | | 03/13/2012 | 03/13/2012 | 03/13/2012 | | 03/26/2012 | 267.95 |
| | | | | | | | Account 53120 - Employee Mileage Expense Totals | | Invoice Transactions 6 | <u>\$494.34</u> |
| Account 60250 - Medical Supplies and Drugs | | | | | | | | | | |
| 1744 - Richmark Medical - A Division of MMS | 249904 | Health- Richmark- A Division MMS | Paid by Check # 320545 | | 02/20/2012 | 03/15/2012 | 03/15/2012 | | 03/26/2012 | 63.96 |
| | | | | | | | Account 60250 - Medical Supplies and Drugs Totals | | Invoice Transactions 1 | <u>\$63.96</u> |
| | | | | | | | Sub-Department 631 - Division of Disease Prevention Totals | | Invoice Transactions 20 | <u>\$14,349.23</u> |
| | | | | | | | Department 580 - Health Totals | | Invoice Transactions 74 | <u>\$31,802.13</u> |
| | | | | | | | Fund 350 - County Health Totals | | Invoice Transactions 74 | <u>\$31,802.13</u> |
| Fund 351 - Kane Kares | | | | | | | | | | |
| Department 580 - Health | | | | | | | | | | |
| Sub-Department 640 - Kane Kares | | | | | | | | | | |
| Account 50150 - Contractual/Consulting Services | | | | | | | | | | |
| 6010 - Translation Today Network Inc | 2549 | Health-Translation Today-Home Health visit | Paid by Check # 320588 | | 03/14/2012 | 03/15/2012 | 03/15/2012 | | 03/26/2012 | 285.54 |
| | | | | | | | Account 50150 - Contractual/Consulting Services Totals | | Invoice Transactions 1 | <u>\$285.54</u> |
| Account 53120 - Employee Mileage Expense | | | | | | | | | | |
| 4462 - Cynthia Biedrzycki | 03052012 | Mileage 2/1-2/28/12 | Paid by EFT # 13232 | | 03/13/2012 | 03/13/2012 | 03/13/2012 | | 03/26/2012 | 136.81 |
| 4476 - Mary Schleicher | 03062012 | Mileage 2/1- 2/29/12 | Paid by EFT # 13358 | | 03/13/2012 | 03/13/2012 | 03/13/2012 | | 03/26/2012 | 272.89 |
| | | | | | | | Account 53120 - Employee Mileage Expense Totals | | Invoice Transactions 2 | <u>\$409.70</u> |
| | | | | | | | Sub-Department 640 - Kane Kares Totals | | Invoice Transactions 3 | <u>\$695.24</u> |
| | | | | | | | Department 580 - Health Totals | | Invoice Transactions 3 | <u>\$695.24</u> |
| | | | | | | | Fund 351 - Kane Kares Totals | | Invoice Transactions 3 | <u>\$695.24</u> |
| | | | | | | | Grand Totals | | Invoice Transactions 101 | <u>\$47,835.70</u> |

**Public Health Committee Revenue Report - Summary
Through March 31, 2012 (33.3% YTD)**

| | Current Month Transactions | Total Amended Budget | YTD Actual Transactions | Total % Received |
|--|----------------------------------|----------------------------|----------------------------|---------------------|
| 500 Animal Control | 58,176 | 979,992 | 126,254 | 12.88% |
| 290 Animal Control | 58,176 | 979,992 | 126,254 | 12.88% |
| 510 Emergency Management Services | 0 | 88,000 | 27,817 | 31.61% |
| 001 General Fund | 0 | 88,000 | 27,817 | 31.61% |
| 580 Health | 670,984 | 5,353,856 | 1,994,432 | 37.25% |
| 350 County Health | 542,217 | 4,548,330 | 1,545,091 | 33.97% |
| 351 Kane Kares | 128,766 | 805,526 | 449,341 | 55.78% |
| Grand Total | 729,159 | 6,421,848 | 2,148,502 | 33.46% |

**Public Health Committee Expenditure Report - Summary
Through March 31, 2012 (33.3% YTD, 34.6% Payroll)**

| | Current Month Transactions | Total Amended Budget | YTD Actual Transactions | YTD Encumbrances | Total % Used |
|--|----------------------------------|----------------------------|----------------------------|---------------------|-----------------|
| 500 Animal Control | 89,466 | 979,992 | 268,105 | 31,192 | 30.54% |
| 290 Animal Control | 89,466 | 979,992 | 268,105 | 31,192 | 30.54% |
| 510 Emergency Management Services | 19,067 | 194,705 | 61,178 | 0 | 31.42% |
| 001 General Fund | 19,067 | 194,705 | 61,178 | 0 | 31.42% |
| 580 Health | 417,900 | 5,353,856 | 1,681,195 | 13,233 | 31.65% |
| 350 County Health | 356,720 | 4,548,330 | 1,461,480 | 13,233 | 32.42% |
| 351 Kane Kares | 61,180 | 805,526 | 219,715 | 0 | 27.28% |
| Grand Total | 526,433 | 6,528,553 | 2,010,477 | 44,425 | 31.48% |

**Public Health Committee Expenditure Report - Detail
Through March 31, 2012 (33.3% YTD, 34.6% Payroll)**

| | Current Month Transactions | Total Amended Budget | YTD Actual Transactions | YTD Encumbrances | Total % Used |
|---|----------------------------------|----------------------------|----------------------------|---------------------|-----------------|
| 500 Animal Control | 89,466 | 979,992 | 268,105 | 31,192 | 30.54% |
| Personnel Services- Salaries & Wages | 49,369 | 480,672 | 154,403 | 0 | 32.12% |
| 290 Animal Control | 49,369 | 480,672 | 154,403 | 0 | 32.12% |
| Personnel Services- Employee Benefits | 13,757 | 176,144 | 50,839 | 0 | 28.86% |
| 290 Animal Control | 13,757 | 176,144 | 50,839 | 0 | 28.86% |
| Contractual Services | 22,844 | 94,303 | 45,024 | 28,537 | 78.01% |
| 290 Animal Control | 22,844 | 94,303 | 45,024 | 28,537 | 78.01% |
| Commodities | 3,496 | 75,600 | 17,839 | 2,655 | 27.11% |
| 290 Animal Control | 3,496 | 75,600 | 17,839 | 2,655 | 27.11% |
| Transfers Out | | 153,273 | 0 | 0 | 0.00% |
| 290 Animal Control | | 153,273 | 0 | 0 | 0.00% |
| 510 Emergency Management Services | 19,067 | 194,705 | 61,178 | 0 | 31.42% |
| Personnel Services- Salaries & Wages | 16,657 | 144,362 | 49,972 | 0 | 34.62% |
| 001 General Fund | 16,657 | 144,362 | 49,972 | 0 | 34.62% |
| Personnel Services- Employee Benefits | 1,588 | 19,859 | 6,366 | 0 | 32.06% |
| 001 General Fund | 1,588 | 19,859 | 6,366 | 0 | 32.06% |
| Contractual Services | 154 | 23,184 | 2,043 | 0 | 8.81% |
| 001 General Fund | 154 | 23,184 | 2,043 | 0 | 8.81% |
| Commodities | 668 | 7,300 | 2,798 | 0 | 38.33% |
| 001 General Fund | 668 | 7,300 | 2,798 | 0 | 38.33% |
| 580 Health | 417,900 | 5,353,856 | 1,681,195 | 13,233 | 31.65% |
| Personnel Services- Salaries & Wages | 259,873 | 3,223,860 | 1,110,042 | 0 | 34.43% |
| 350 County Health | 216,061 | 2,753,582 | 946,602 | 0 | 34.38% |
| 351 Kane Kares | 43,812 | 470,278 | 163,440 | 0 | 34.75% |
| Personnel Services- Employee Benefits | 109,941 | 1,352,201 | 423,813 | 0 | 31.34% |
| 350 County Health | 96,661 | 1,157,099 | 374,438 | 0 | 32.36% |
| 351 Kane Kares | 13,280 | 195,102 | 49,375 | 0 | 25.31% |
| Contractual Services | 44,015 | 574,869 | 118,807 | 11,975 | 22.75% |
| 350 County Health | 39,927 | 467,409 | 112,160 | 11,975 | 26.56% |
| 351 Kane Kares | 4,088 | 107,460 | 6,646 | 0 | 6.18% |
| Commodities | 4,071 | 202,926 | 28,533 | 1,258 | 14.68% |
| 350 County Health | 4,071 | 170,240 | 28,280 | 1,258 | 17.35% |
| 351 Kane Kares | | 32,686 | 253 | 0 | 0.77% |
| Grand Total | 526,433 | 6,528,553 | 2,010,477 | 44,425 | 31.48% |



Health Department By Account Classification @ 3/31/12

Through 03/31/12

Prior Fiscal Year Activity Included

| Account Classification | Adopted Budget | Budget Amendments | Amended Budget | Current Month Transactions | YTD Encumbrances | YTD Transactions | YTD Transactions | Budget - YTD Transactions | % used/ Rec'd | Prior Year Total |
|--|-----------------------|----------------------|-----------------------|-------------------------------|----------------------|-----------------------|-----------------------|------------------------------|------------------|-----------------------|
| Fund 350 - County Health | | | | | | | | | | |
| REVENUE | | | | | | | | | | |
| Property Taxes | 1,972,455.00 | .00 | 1,972,455.00 | .00 | .00 | .00 | 1,972,455.00 | 0 | | 1,966,890.24 |
| Other Taxes | .00 | .00 | .00 | .00 | .00 | .00 | .00 | +++ | | 1,305.55 |
| Licenses and Permits | 1,032,118.00 | .00 | 1,032,118.00 | 40,721.25 | .00 | 916,104.37 | 116,013.63 | 89 | | 1,055,068.17 |
| Grants | 1,409,757.00 | .00 | 1,409,757.00 | 479,312.76 | .00 | 578,515.42 | 831,241.58 | 41 | | 2,489,186.46 |
| Charges for Services | 59,500.00 | .00 | 59,500.00 | 19,668.64 | .00 | 45,285.64 | 14,214.36 | 76 | | 150,052.09 |
| Reimbursements | 64,500.00 | .00 | 64,500.00 | 965.00 | .00 | 3,106.50 | 61,393.50 | 5 | | 281,967.97 |
| Interest Revenue | 10,000.00 | .00 | 10,000.00 | 1,412.49 | .00 | 1,920.32 | 8,079.68 | 19 | | 18,463.97 |
| Other | .00 | .00 | .00 | 137.30 | .00 | 158.30 | (158.30) | +++ | | 24,275.68 |
| Transfers In | .00 | .00 | .00 | .00 | .00 | .00 | .00 | +++ | | .00 |
| Cash on Hand | .00 | .00 | .00 | .00 | .00 | .00 | .00 | +++ | | .00 |
| REVENUE TOTALS | \$4,548,330.00 | \$0.00 | \$4,548,330.00 | \$542,217.44 | \$0.00 | \$1,545,090.55 | \$3,003,239.45 | 34% | | \$5,987,210.13 |
| EXPENSE | | | | | | | | | | |
| Personnel Services- Salaries & Wages | 2,753,582.00 | .00 | 2,753,582.00 | 216,061.31 | .00 | 946,601.82 | 1,806,980.18 | 34 | | 2,781,955.62 |
| Personnel Services- Employee Benefits | 1,157,099.00 | .00 | 1,157,099.00 | 96,660.82 | .00 | 374,437.76 | 782,661.24 | 32 | | 1,395,934.88 |
| Contractual Services | 467,409.00 | .00 | 467,409.00 | 39,926.87 | 11,975.00 | 112,160.49 | 343,273.51 | 27 | | 1,178,325.05 |
| Commodities | 170,240.00 | .00 | 170,240.00 | 4,071.05 | 1,257.53 | 28,279.77 | 140,702.70 | 17 | | 363,795.57 |
| Capital | .00 | .00 | .00 | .00 | .00 | .00 | .00 | +++ | | 11,698.87 |
| Transfers Out | .00 | .00 | .00 | .00 | .00 | .00 | .00 | +++ | | .00 |
| EXPENSE TOTALS | \$4,548,330.00 | \$0.00 | \$4,548,330.00 | \$356,720.05 | \$13,232.53 | \$1,461,479.84 | \$3,073,617.63 | 32% | | \$5,731,709.99 |
| Fund 350 - County Health Totals | | | | | | | | | | |
| REVENUE TOTALS | 4,548,330.00 | .00 | 4,548,330.00 | 542,217.44 | .00 | 1,545,090.55 | 3,003,239.45 | 34 | | 5,987,210.13 |
| EXPENSE TOTALS | 4,548,330.00 | .00 | 4,548,330.00 | 356,720.05 | 13,232.53 | 1,461,479.84 | 3,073,617.63 | 32 | | 5,731,709.99 |
| Fund 350 - County Health Totals | \$0.00 | \$0.00 | \$0.00 | \$185,497.39 | (\$13,232.53) | \$83,610.71 | (\$70,378.18) | | | \$255,500.14 |
| Fund 351 - Kane Kares | | | | | | | | | | |
| REVENUE | | | | | | | | | | |
| Grants | 412,078.00 | .00 | 412,078.00 | 128,295.00 | .00 | 128,295.00 | 283,783.00 | 31 | | 265,169.00 |
| Reimbursements | .00 | .00 | .00 | 294.60 | .00 | 294.60 | (294.60) | +++ | | 20.00 |
| Interest Revenue | .00 | .00 | .00 | 176.69 | .00 | 327.86 | (327.86) | +++ | | 1,569.63 |
| Other | .00 | .00 | .00 | .00 | .00 | .00 | .00 | +++ | | 20.00 |
| Transfers In | 320,424.00 | .00 | 320,424.00 | .00 | .00 | 320,424.00 | .00 | 100 | | 429,424.00 |
| Cash on Hand | 73,024.00 | .00 | 73,024.00 | .00 | .00 | .00 | 73,024.00 | 0 | | .00 |
| REVENUE TOTALS | \$805,526.00 | \$0.00 | \$805,526.00 | \$128,766.29 | \$0.00 | \$449,341.46 | \$356,184.54 | 56% | | \$696,202.63 |
| EXPENSE | | | | | | | | | | |
| Personnel Services- Salaries & Wages | 470,278.00 | .00 | 470,278.00 | 43,811.62 | .00 | 163,439.97 | 306,838.03 | 35 | | 371,179.71 |
| Personnel Services- Employee Benefits | 195,102.00 | .00 | 195,102.00 | 13,279.96 | .00 | 49,375.44 | 145,726.56 | 25 | | 105,164.50 |
| Contractual Services | 107,460.00 | .00 | 107,460.00 | 4,088.27 | .00 | 6,646.34 | 100,813.66 | 6 | | 60,828.62 |
| Commodities | 32,686.00 | .00 | 32,686.00 | .00 | .00 | 252.94 | 32,433.06 | 1 | | 3,380.17 |
| Capital | .00 | .00 | .00 | .00 | .00 | .00 | .00 | +++ | | .00 |



Health Department By Account Classification @ 3/31/12

Through 03/31/12

Prior Fiscal Year Activity Included

| Account Classification | Adopted Budget | Budget Amendments | Amended Budget | Current Month Transactions | YTD Encumbrances | YTD Transactions | Budget - YTD Transactions | % used/ Rec'd | Prior Year Total |
|------------------------------|-------------------|----------------------|-------------------|-------------------------------|---------------------|---------------------|------------------------------|------------------|------------------|
| Fund 351 - Kane Kares | | | | | | | | | |
| EXPENSE TOTALS | \$805,526.00 | \$0.00 | \$805,526.00 | \$61,179.85 | \$0.00 | \$219,714.69 | \$585,811.31 | 27% | \$540,553.00 |
| Fund 351 - Kane Kares Totals | | | | | | | | | |
| REVENUE TOTALS | 805,526.00 | .00 | 805,526.00 | 128,766.29 | .00 | 449,341.46 | 356,184.54 | 56 | 696,202.63 |
| EXPENSE TOTALS | 805,526.00 | .00 | 805,526.00 | 61,179.85 | .00 | 219,714.69 | 585,811.31 | 27 | 540,553.00 |
| Fund 351 - Kane Kares Totals | \$0.00 | \$0.00 | \$0.00 | \$67,586.44 | \$0.00 | \$229,626.77 | (\$229,626.77) | | \$155,649.63 |
| Grand Totals | | | | | | | | | |
| REVENUE TOTALS | 5,353,856.00 | .00 | 5,353,856.00 | 670,983.73 | .00 | 1,994,432.01 | 3,359,423.99 | 37 | 6,683,412.76 |
| EXPENSE TOTALS | 5,353,856.00 | .00 | 5,353,856.00 | 417,899.90 | 13,232.53 | 1,681,194.53 | 3,659,428.94 | 32 | 6,272,262.99 |
| Grand Totals | \$0.00 | \$0.00 | \$0.00 | \$253,083.83 | (\$13,232.53) | \$313,237.48 | (\$300,004.95) | | \$411,149.77 |

**Kane County Purchasing Card Information
Public Health Committee
Statement Due Date 04/29/2012**

500 ANIMAL CONTROL DEPARTMENT

| <i>Transaction Date</i> | <i>Merchant Name</i> | <i>Additional Information</i> | <i>Transaction Amount</i> |
|-------------------------|------------------------|-------------------------------|---------------------------|
| 03/08/2012 | ANTECH DIAGNOSTICS-WES | 08005421151 | 78.90 |
| 03/08/2012 | PETCO 697 63506976 | GENEVA | 164.70 |
| 03/13/2012 | OFFICE MAX | BATAVIA | -62.99 |
| 03/13/2012 | OFFICE MAX | BATAVIA | 31.96 |
| 03/26/2012 | PETCO 697 63506976 | GENEVA | 96.59 |
| 03/29/2012 | PAPA SAVERIOS PIZZA | GENEVA | 54.63 |
| 04/03/2012 | HAMILTON ANIMAL PRODUC | 09372939994 | 259.53 |
| <i>Department Total</i> | | | 623.32 |

510 EMERGENCY MANAGEMENT

| <i>Transaction Date</i> | <i>Merchant Name</i> | <i>Additional Information</i> | <i>Transaction Amount</i> |
|-------------------------|-----------------------|-------------------------------|---------------------------|
| 03/24/2012 | PAYPAL LEPC | 402-935-7733 | 375.00 |
| 03/28/2012 | BEST BUY MHT 00003871 | GENEVA | 27.92 |
| <i>Department Total</i> | | | 402.92 |

580 HEALTH DEPARTMENT

| <i>Transaction Date</i> | <i>Merchant Name</i> | <i>Additional Information</i> | <i>Transaction Amount</i> |
|-------------------------|------------------------|-------------------------------|---------------------------|
| 03/02/2012 | MEDICAL ARTS PRESS | 08003282179 | 90.26 |
| 03/02/2012 | MEDICAL ARTS PRESS | 08003282179 | 31.86 |
| 03/05/2012 | THE CHATEAU-FRONT DESK | BLOOMINGTON | 66.08 |
| 03/06/2012 | MEDICAL ARTS PRESS | 08003282179 | 79.63 |
| 03/07/2012 | MEDICAL ARTS PRESS | 08003282179 | 138.11 |
| 03/09/2012 | PETROLIANCE | APEX | 133.40 |
| 03/14/2012 | THE OFFICE DEALER LLC | 08888098893 | 487.90 |
| 03/15/2012 | TA #035 EFFINGHAM | EFFINGHAM | 29.96 |
| 03/16/2012 | FRONTIER | MANKATO | 193.60 |
| 03/16/2012 | EB GOOD FOOD FESTIVAL | 8003508850 | 42.99 |
| 03/18/2012 | 37SIGNALS-CHARGE.COM | 03122390165 | 24.00 |
| 03/19/2012 | THE HOME DEPOT 1921 | GENEVA | 17.94 |
| 03/23/2012 | MEDICAL ARTS PRESS | 08003282179 | -19.98 |
| 03/27/2012 | MEDICAL ARTS PRESS | 08003282179 | -90.26 |
| 03/27/2012 | CONTRIBUTIONS CENTER | 08883533221 | 35.00 |
| 03/28/2012 | ILLINOIS ENVIRONMEN | 815-9775884 | 120.00 |
| 03/28/2012 | ILLINOIS ENVIRONMEN | 815-9775884 | 560.00 |
| 04/02/2012 | PETROLIANCE | APEX | 92.78 |
| 04/04/2012 | CLARKE MOSQUITO CONTRO | 630-894-2000 | 1,333.20 |
| <i>Department Total</i> | | | 3,366.47 |
| <i>Committee Total</i> | | | 4,392.71 |



Budget Performance Report

Date Range 03/01/12 - 03/31/12

Include Rollup Account and Rollup to Account

| Account | Account Description | Adopted Budget | Budget Amendments | Amended Budget | Current Month Transactions | YTD Encumbrances | YTD Transactions | Budget - YTD Transactions | % used/ Rec'd | Prior Year Total |
|---|----------------------------------|----------------|-------------------|----------------|----------------------------|------------------|------------------|---------------------------|---------------|------------------|
| Fund 290 - Animal Control | | | | | | | | | | |
| REVENUE | | | | | | | | | | |
| Department 500 - Animal Control | | | | | | | | | | |
| Sub-Department 000 - Revenues | | | | | | | | | | |
| 34580 | Registration and Tag Fees | .00 | .00 | .00 | 53,426.00 | .00 | 53,426.00 | (53,426.00) | +++ | .00 |
| 34590 | Animal Transportation Fees | .00 | .00 | .00 | 300.00 | .00 | 300.00 | (300.00) | +++ | .00 |
| 34600 | Animal Pickup Fees | .00 | .00 | .00 | 1,500.00 | .00 | 1,500.00 | (1,500.00) | +++ | .00 |
| 34610 | Impound Fees | .00 | .00 | .00 | 595.00 | .00 | 595.00 | (595.00) | +++ | .00 |
| 34620 | Adoption Fees | .00 | .00 | .00 | 1,020.00 | .00 | 1,020.00 | (1,020.00) | +++ | .00 |
| 34630 | Microchip Fees | .00 | .00 | .00 | 262.50 | .00 | 262.50 | (262.50) | +++ | .00 |
| 36100 | Court Fines | .00 | .00 | .00 | 424.00 | .00 | 424.00 | (424.00) | +++ | .00 |
| 37230 | Service Reimbursements | .00 | .00 | .00 | 300.00 | .00 | 300.00 | (300.00) | +++ | .00 |
| 38000 | Investment Income | .00 | .00 | .00 | 138.11 | .00 | 138.11 | (138.11) | +++ | .00 |
| 38520 | General Donations | .00 | .00 | .00 | 35.00 | .00 | 35.00 | (35.00) | +++ | .00 |
| 38900 | Miscellaneous Other | .00 | .00 | .00 | 175.00 | .00 | 175.00 | (175.00) | +++ | .00 |
| Sub-Department 000 - Revenues Totals | | \$0.00 | \$0.00 | \$0.00 | \$58,175.61 | \$0.00 | \$58,175.61 | (\$58,175.61) | +++ | \$0.00 |
| Department 500 - Animal Control Totals | | \$0.00 | \$0.00 | \$0.00 | \$58,175.61 | \$0.00 | \$58,175.61 | (\$58,175.61) | +++ | \$0.00 |
| REVENUE TOTALS | | \$0.00 | \$0.00 | \$0.00 | \$58,175.61 | \$0.00 | \$58,175.61 | (\$58,175.61) | +++ | \$0.00 |
| EXPENSE | | | | | | | | | | |
| Department 500 - Animal Control | | | | | | | | | | |
| Sub-Department 500 - Animal Control | | | | | | | | | | |
| 40000 | Salaries and Wages | .00 | .00 | .00 | 31,386.51 | .00 | 31,386.51 | (31,386.51) | +++ | .00 |
| 40200 | Overtime Salaries | .00 | .00 | .00 | 1,712.23 | .00 | 1,712.23 | (1,712.23) | +++ | .00 |
| 45000 | Healthcare Contribution | .00 | .00 | .00 | 2,326.14 | .00 | 2,326.14 | (2,326.14) | +++ | .00 |
| 45010 | Dental Contribution | .00 | .00 | .00 | 55.80 | .00 | 55.80 | (55.80) | +++ | .00 |
| 45100 | FICA/SS Contribution | .00 | .00 | .00 | 2,510.06 | .00 | 2,510.06 | (2,510.06) | +++ | .00 |
| 45200 | IMRF Contribution | .00 | .00 | .00 | 3,537.07 | .00 | 3,537.07 | (3,537.07) | +++ | .00 |
| 50150 | Contractual/Consulting Services | .00 | .00 | .00 | 20,225.00 | 5,397.50 | 20,225.00 | (25,622.50) | +++ | .00 |
| 50180 | Veterinarian Services | .00 | .00 | .00 | 909.76 | (414.00) | 909.76 | (495.76) | +++ | .00 |
| 52000 | Disposal and Water Softener Svcs | .00 | .00 | .00 | 22.83 | .00 | 22.83 | (22.83) | +++ | .00 |
| 52020 | Repairs and Maintenance- Roads | .00 | .00 | .00 | 452.00 | (452.00) | 452.00 | .00 | +++ | .00 |
| 52110 | Repairs and Maint- Buildings | .00 | .00 | .00 | 347.90 | (300.00) | 347.90 | (47.90) | +++ | .00 |
| 52140 | Repairs and Maint- Copiers | .00 | .00 | .00 | 98.18 | (98.18) | 98.18 | .00 | +++ | .00 |
| 52160 | Repairs and Maint- Equipment | .00 | .00 | .00 | 248.00 | .00 | 248.00 | (248.00) | +++ | .00 |
| 53130 | General Association Dues | .00 | .00 | .00 | 540.00 | .00 | 540.00 | (540.00) | +++ | .00 |
| 60000 | Office Supplies | .00 | .00 | .00 | 396.51 | 11.97 | 396.51 | (408.48) | +++ | .00 |
| 60010 | Operating Supplies | .00 | .00 | .00 | 134.10 | 222.09 | 134.10 | (356.19) | +++ | .00 |
| 60100 | Utilities- Water | .00 | .00 | .00 | 210.97 | .00 | 210.97 | (210.97) | +++ | .00 |
| 60140 | Animal Care Supplies | .00 | .00 | .00 | 607.12 | 218.17 | 607.12 | (825.29) | +++ | .00 |
| 60250 | Medical Supplies and Drugs | .00 | .00 | .00 | 220.78 | 25.38 | 220.78 | (246.16) | +++ | .00 |
| 63000 | Utilities- Natural Gas | .00 | .00 | .00 | 1,087.79 | .00 | 1,087.79 | (1,087.79) | +++ | .00 |



Budget Performance Report

Date Range 03/01/12 - 03/31/12

Include Rollup Account and Rollup to Account

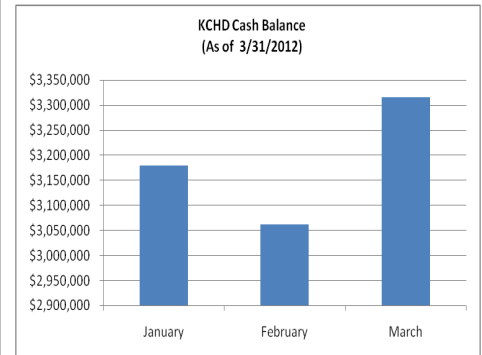
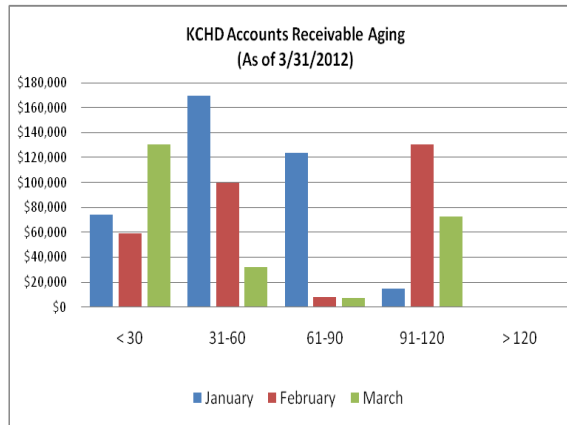
| Account | Account Description | Adopted Budget | Budget Amendments | Amended Budget | Current Month Transactions | YTD Encumbrances | YTD Transactions | Budget - YTD Transactions | % used/ Rec'd | Prior Year Total |
|---------------------------|--|----------------|-------------------|----------------|----------------------------|------------------|------------------|---------------------------|---------------|------------------|
| Fund 290 - Animal Control | | | | | | | | | | |
| | EXPENSE | | | | | | | | | |
| | Department 500 - Animal Control | | | | | | | | | |
| | Sub-Department 500 - Animal Control | | | | | | | | | |
| 63010 | Utilities- Electric | .00 | .00 | .00 | 620.76 | .00 | 620.76 | (620.76) | +++ | .00 |
| 64000 | Telephone | .00 | .00 | .00 | 217.76 | .00 | 217.76 | (217.76) | +++ | .00 |
| | Sub-Department 500 - Animal Control Totals | \$0.00 | \$0.00 | \$0.00 | \$67,867.27 | \$4,610.93 | \$67,867.27 | (\$72,478.20) | +++ | \$0.00 |
| | Department 500 - Animal Control Totals | \$0.00 | \$0.00 | \$0.00 | \$67,867.27 | \$4,610.93 | \$67,867.27 | (\$72,478.20) | +++ | \$0.00 |
| | EXPENSE TOTALS | \$0.00 | \$0.00 | \$0.00 | \$67,867.27 | \$4,610.93 | \$67,867.27 | (\$72,478.20) | +++ | \$0.00 |
| | Fund 290 - Animal Control Totals | | | | | | | | | |
| | REVENUE TOTALS | .00 | .00 | .00 | 58,175.61 | .00 | 58,175.61 | (58,175.61) | +++ | .00 |
| | EXPENSE TOTALS | .00 | .00 | .00 | 67,867.27 | 4,610.93 | 67,867.27 | (72,478.20) | +++ | .00 |
| | Fund 290 - Animal Control Totals | \$0.00 | \$0.00 | \$0.00 | (\$9,691.66) | (\$4,610.93) | (\$9,691.66) | \$14,302.59 | | \$0.00 |
| | Grand Totals | | | | | | | | | |
| | REVENUE TOTALS | .00 | .00 | .00 | 58,175.61 | .00 | 58,175.61 | (58,175.61) | +++ | .00 |
| | EXPENSE TOTALS | .00 | .00 | .00 | 67,867.27 | 4,610.93 | 67,867.27 | (72,478.20) | +++ | .00 |
| | Grand Totals | \$0.00 | \$0.00 | \$0.00 | (\$9,691.66) | (\$4,610.93) | (\$9,691.66) | \$14,302.59 | | \$0.00 |

PUBLIC HEALTH COMMITTEE REPORT

Ten essential services of Public Health

1. Monitor health status and understand health issues facing the community,
2. Protect people from health problems and health hazards.
3. Give people the information they need to make healthy choices.
4. Engage the community to identify and solve health problems.
5. Develop public health policies and plans.
6. Enforce public health laws and regulations.
7. Help people receive health services.
8. Maintain a competent public health workforce.
9. Evaluate and improve programs and interventions.
10. Contribute to and apply the evidence base of public health.

Finance and Budget report



Accounts receivable and cash balance are presented in comparison with previous months.

Essential Service No. 2

[Protect people from health problems and health hazards.](#)



Hesed House Related Cases (Confirmed)

| Year | Total Confirmed cases # |
|------|-------------------------|
| 2007 | 1 |
| 2009 | 2 |
| 2010 | 15 |
| 2011 | 15 |
| 2012 | 0 |

TB outbreak among the homeless

The good news is no confirmed cases of active TB related to the homeless shelter outbreak have been found in 2012. This doesn't mean we can let down our guard, however. The outbreak continues and the Health Department will continue to aggressively monitor the situation.

Link to Statistics

- Finance/Budget
- Kane Kares
- Environmental Health
- Communicable Disease
- Health Promotion

www.kanehealth.com/phc.htm

Essential Service #4

[Engage the community to identify and solve health problems.](#)



Community garden plots now available

A total of 72 plots in the Kane County Health Department's community garden are now available, just in time for the start of the growing season. The garden is at 1330 N. Highland Ave., in Aurora. Many park districts and other agencies also have community garden programs. A healthy diet of fresh fruits and veggies is one of the weapons in the fight against chronic disease.



Essential Service # 2

[Protect people from health problems and health hazards](#)

KCHD's Communicable Disease team, from left: Sara Boline, Adriana Posada, Juanita Brown, Laurie Sarro-Lowe, Kate Marishta and Nancy Murphy.



Norovirus Outbreak

When D300 reported on March 8 a large number of students absent with symptoms of diarrhea, and vomiting, KCHD's communicable disease team responded immediately. Investigators traveled to students' homes and collected samples, which were taken to the state labs that night. In less than 24 hours, the results were in: Norovirus. This was a classic example of excellent collaboration between the school district, Illinois Department of Public Health and the Health Department.

Norovirus is a common and very contagious virus that can infect anyone. You can get it from an infected person, contaminated food or water, or by touching contaminated surfaces. The best prevention is hand-washing and by staying home if you're ill. Learn more about norovirus by visiting www.kanehealth.com/norovirus.htm



AGENDA ITEM EXECUTIVE SUMMARY

Agenda Item #

- Resolution
 Ordinance

Name: Amending 2012 Health Department Budget TB

Presenter/Sponsor: Paul Kuehnert, Executive Director, Kane County Health Department

Budget Information: Was this item budgeted? Yes No N/A

Appropriation Amount: \$194,900

If not budgeted, explain funding source

Illinois Department of Public Health

SUMMARY: The Kane County Health Department in collaboration with the Federal Centers for Disease Control and Prevention and the Illinois Department of Public Health, is currently managing an outbreak of Tuberculosis among homeless individuals in Kane County. Organized, concerted public health, medical and social support activities must be directed toward the homeless population in Kane County in order to identify TB infections and assure treatment, in order to contain the outbreak.

The Illinois Department of Public Health will award the Kane County Health Department additional grant in the amount of up to One Hundred Ninety Four Thousand Nine Hundred Dollars (\$194,900) for the purposes of responding to this TB Outbreak. All funds will be used for direct medical care, social services, housing and nutrition services.

Attachments:

Detailed information available from:

Staff Name: Claire Dobbins

Phone: 630-2085152

Resolution/Ordinance Tracking:

Assigned Committee:

Passed

Sent to: on: If Other, specify: Committee Remarks: Next Committee: Sent to: on: If Other, specify: Committee Remarks: Next Committee: Sent to: on: Committee Remarks: County Board Date:

STATE OF ILLINOIS

COUNTY OF KANE

RESOLUTION NO. 12-

AMENDING 2012 HEALTH DEPARTMENT BUDGET - TB

WHEREAS, THE Kane County Health Department, in collaboration with the federal Centers for Disease Control (CDC) and Prevention and the Illinois Department of Public Health, is currently managing an outbreak of tuberculosis among individuals in Kane County; and

WHEREAS, organized, concerted public health, medical and social support activities must be directed toward the homeless population in Kane County in order to identify TB infections and assure treatment, in order to contain the outbreak; and

WHEREAS, the Illinois Department of Public Health will award the Kane County Health Department One Hundred Ninety Four Thousand Nine Hundred Dollars (\$194,900) of federal CDC funds for the purpose of responding to this outbreak.

NOW, THEREFORE, BE IT RESOLVED by the Kane County Board that the following FY2012 budget adjustment be made to reflect the additional funding amount of One Hundred Ninety Four Thousand Nine Hundred Dollars (\$194,900) in revenue from CDC funds passed through the Illinois Department of Public Health.

HEALTH DEPARTMENT FUND

350.580.000.32580 (TB Observed Therapy Grant)

350.580.631.50150 (Contracts & Consulting)

| Line Item | Line Item Description | Was personnel/item/service approved in original budget or a subsequent budget revision? | Are funds currently available for this personnel/item/service in the specific line item? | If funds are not currently available in the specified line item, where are the funds available? |
|-------------------|---------------------------|---|--|---|
| 350.580.000.32580 | TB Observed Therapy Grant | No | No | 350.580.000.32580 (TB Observed Therapy Grant) |

Passed by the Kane County Board on _____.

John A. Cunningham
Clerk, County Board
Kane County, Illinois

Karen McConnaughay
Chairman, County Board
Kane County, Illinois

Vote:

Yes

No

Voice

Abstentions

COUNTY of KANE
OFFICE of EMERGENCY MANAGEMENT

Donald H. Bryant, IPEM
Director



719 South Batavia Ave.
Geneva, Illinois, 60134
Emergency: (630) 208-8911
Office: (630) 232-5985
FAX: (630) 232-7408

TO: Members of the Public Health Committee
FROM: Director Donald Bryant
SUBJECT: Monthly Report
Date: April 24, 2012

During this reporting period the OEM continues to prepare for the upcoming severe weather season. OEM staff conducted severe weather training classes for the staff at KDOT along with the staff at the Q Center in St. Charles.

Staff also conducted a tabletop exercise for the Village of Montgomery based on a tornado scenario along with participating in a tornado functional exercise with the cities of Batavia, Geneva, and St. Charles.

This month the OEM held the quarterly meeting of the Natural Hazards Mitigation Committee. The coordinated post flood event damage assessment process was discussed along with discussion on how this damage assessment process could be used to support the County's green infrastructure and green spaces initiatives.

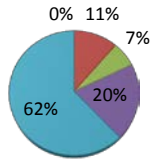
This month staff attended the petroleum pipeline seminar held in Crystal Lake. This is an annual event to discuss the various issues associated with underground pipelines allowing the pipeline companies and first responders to share information and ideas.

Finally, the OEM conducted annual fire drills for the buildings on the main County campus. Observations were made as to the employee's familiarity with their building safety plans. These observations will be submitted to Human Resource Management to identify any opportunities for improvement.

Emergency Management Volunteer Group Activity Report FY 2012

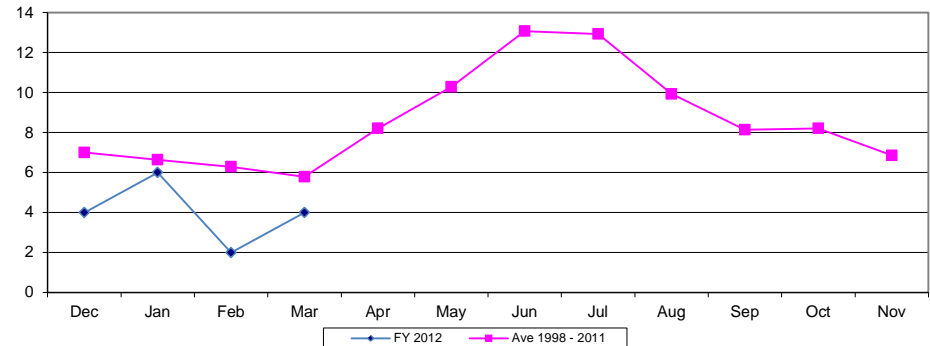
| | Dec | Jan | Feb | Mar | Apr | May | Jun | Jul | Aug | Sep | Oct | Nov | Total Hours | Ave Hours |
|----------------------------|--------|--------|--------|--------|--------|--------|--------|--------|--------|--------|--------|--------|-------------|-----------|
| Severe Weather | 0.00 | 0.00 | 0.00 | 0.00 | | | | | | | | | 0.00 | 0.00 |
| Assist to KCSO | 12.50 | 102.25 | 5.00 | 57.00 | | | | | | | | | 176.75 | 44.19 |
| Assist to Other Agency | 17.50 | 57.50 | 10.00 | 16.00 | | | | | | | | | 101.00 | 25.25 |
| Agency Training | 30.25 | 112.00 | 113.00 | 57.25 | | | | | | | | | 312.50 | 78.13 |
| Admin & Maintenance | 166.00 | 247.00 | 284.25 | 269.00 | | | | | | | | | 966.25 | 241.56 |
| Monthly Manhours | | | | | | | | | | | | | | |
| FY 2012 | 226.25 | 518.75 | 412.25 | 399.25 | 0.00 | 0.00 | 0.00 | 0.00 | 0.00 | 0.00 | 0.00 | 0.00 | 1,556.50 | |
| Average 1998 - 2011 | 389.61 | 442.02 | 541.52 | 553.04 | 682.88 | 719.45 | 878.72 | 821.24 | 757.55 | 593.55 | 573.73 | 437.20 | 7,389.51 | 615.79 |
| Number of Call Outs | | | | | | | | | | | | | | |
| FY 2012 | 4 | 6 | 2 | 4 | | | | | | | | | 16 | 4 |
| Average 1998 - 2011 | 7 | 6.64 | 6.29 | 5.79 | 8.21 | 10.29 | 13.07 | 12.93 | 9.93 | 8.14 | 8.21 | 6.86 | 103.36 | 9 |

Year to Date Comparison by Activity

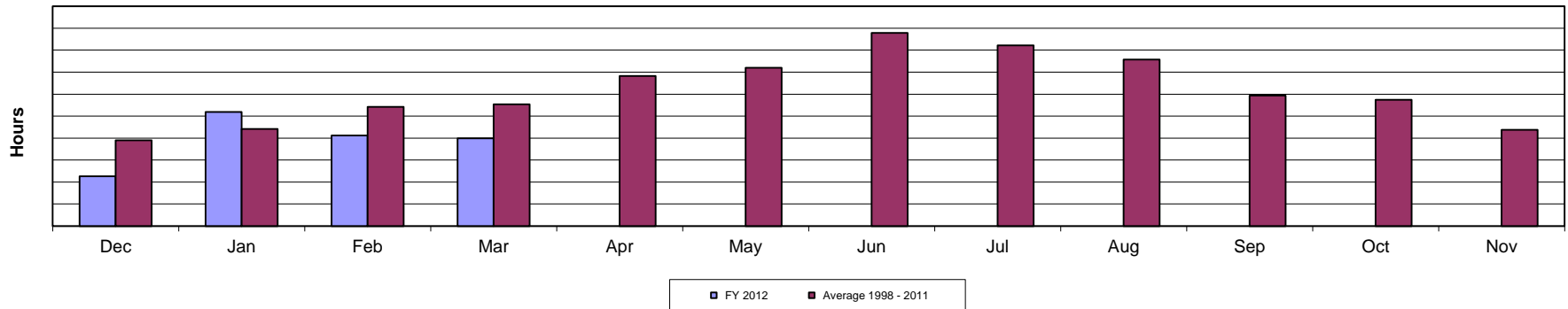


- Severe Weather
- Assist to KCSO
- Assist to Other Agency
- Agency Training
- Admin & Maintenance

Agency Call-Outs



FY 2012 Volunteer Manhours vs Monthly Average



March 2012 OEM Callout Breakdown

| Date | Called by | Paged Out | Where / What | We assisted with: | Area Assisted: |
|----------------------|------------------|------------------|---|---|-----------------------|
| 3/11/2012 | KCSO | 16:30 | Traffic control for Fire - Hampshire | Traffic control - Public safety | Hampshire |
| 3/15/2012 | Campton Hills PD | 16:45 | Traffic control for Accident - Campton Hills Rd & Ponderosa | Traffic control - Public Safety | Campton Hills |
| 3/22/2012 | KCSO | 21:39 | Traffic control for Malfunctioning RR Crossing | Traffic control, Public safety | Batavia Township |
| 3/31/2012 | KCSO | 2:50 | Traffic control for Fire - Jericho Rd | Traffic control, Public safety | Sugar Grove Township |
| Total Call outs | | 4 | | | |
| <hr/> | | | | | |
| 3/27/2012 | KCSO | 12:30 | Command One and operators for KCSO SWAT training | Command post, vehicle, operators, radio comms | Big Rock Twsp |
| Planned Event | | 1 | | | |
| Total for Assistance | | 5 | | | |

OEM Assistance Locations

2012

December 2011 January 2012 February March April May June July August September October November FY Total

Communities

| | | | | | | | | | | | | | | | | | |
|------------------|---|---|---|---|--|--|--|--|--|--|--|--|--|--|--|--|---|
| Algonquin | | | | | | | | | | | | | | | | | 0 |
| Aurora | | | | | | | | | | | | | | | | | 0 |
| Barrington Hills | | | | | | | | | | | | | | | | | 0 |
| Bartlett | | | | | | | | | | | | | | | | | 0 |
| Batavia | | | | | | | | | | | | | | | | | 0 |
| Big Rock | | | | | | | | | | | | | | | | | 0 |
| Burlington | | | | | | | | | | | | | | | | | 0 |
| Campton Hills | 1 | | | 1 | | | | | | | | | | | | | 2 |
| Carpentersville | | | | | | | | | | | | | | | | | 0 |
| East Dundee | | | | | | | | | | | | | | | | | 0 |
| Elburn | | | | | | | | | | | | | | | | | 0 |
| Elgin | | | | | | | | | | | | | | | | | 0 |
| Geneva | | | | | | | | | | | | | | | | | 0 |
| Gilberts | | | | | | | | | | | | | | | | | 0 |
| Hampshire | | | 1 | 1 | | | | | | | | | | | | | 2 |
| Hoffman Estates | | | | | | | | | | | | | | | | | 0 |
| Huntley | | | | | | | | | | | | | | | | | 0 |
| Kaneville | | | | | | | | | | | | | | | | | 0 |
| Lily Lake | | | | | | | | | | | | | | | | | 0 |
| Maple Park | | | | | | | | | | | | | | | | | 0 |
| Montgomery | | | | | | | | | | | | | | | | | 0 |
| North Aurora | | 1 | | | | | | | | | | | | | | | 1 |
| Pingree Grove | | | | | | | | | | | | | | | | | 0 |
| Sleepy Hollow | | | | | | | | | | | | | | | | | 0 |
| South Elgin | | | | | | | | | | | | | | | | | 0 |
| St. Charles | | | | | | | | | | | | | | | | | 0 |
| Sugar Grove | | | | | | | | | | | | | | | | | 0 |
| Virgil | | | | | | | | | | | | | | | | | 0 |
| Wayne | | | | | | | | | | | | | | | | | 0 |
| West Dundee | | | | | | | | | | | | | | | | | 0 |

Townships

| | | | | | | | | | | | | | | | | | |
|-------------|---|---|---|---|--|--|--|--|--|--|--|--|--|--|--|--|---|
| Aurora | | | | | | | | | | | | | | | | | 0 |
| Batavia | | | | 1 | | | | | | | | | | | | | 1 |
| Big Rock | | 1 | | 1 | | | | | | | | | | | | | 2 |
| Blackberry | 1 | | | | | | | | | | | | | | | | 1 |
| Burlington | | | | | | | | | | | | | | | | | 0 |
| Campton | | | | | | | | | | | | | | | | | 0 |
| Dundee | | | | | | | | | | | | | | | | | 0 |
| Elgin | | | | | | | | | | | | | | | | | 0 |
| Geneva | 1 | | | | | | | | | | | | | | | | 1 |
| Hampshire | | | | | | | | | | | | | | | | | 0 |
| Kaneville | | | | | | | | | | | | | | | | | 0 |
| Plato | | | | | | | | | | | | | | | | | 0 |
| Rutland | | 2 | | | | | | | | | | | | | | | 2 |
| St. Charles | 1 | | | | | | | | | | | | | | | | 1 |
| Sugar Grove | | 1 | 1 | 1 | | | | | | | | | | | | | 3 |
| Virgil | | | | | | | | | | | | | | | | | 0 |

County-wide (Weather Events) 0

| | | | | | | | | | | | | | | | | | |
|-------------------------------|--|---|--|--|--|--|--|--|--|--|--|--|--|--|--|--|---|
| Outside the County Assistance | | | | | | | | | | | | | | | | | 0 |
| McHenry Co. EMA | | 1 | | | | | | | | | | | | | | | 1 |
| Will Co. OEM | | | | | | | | | | | | | | | | | 0 |
| DeKalb City | | | | | | | | | | | | | | | | | 0 |

Assist Another County Office 0

Monthly Total 4 6 2 5 0 0 0 0 0 0 0 0 0 0 0 0 17

0
Calls for Assistance & Details



Kane County Department of Animal Control

4060 Keslinger Road
Geneva, Illinois 60134

Phone: 630-232-3555
Fax: 630-232-3585

To: Members of the Public Health Committee
From: Dr. Kimberly Rudloff, Administrator
Subject: March 2012 Monthly Report
Date: April 24, 2012

- In March 2012, there were 3 school visits by an Animal Control Warden. In attendance were around 340 children and 35 miscellaneous teachers and aides.
- In March 2012, we hosted one Brownie Troop and one Girl Scout Troop with contact of 30 children and 8 adults.
- There were 4 spays/ neuters done in March 2012.

| NUMBER OF TAGS PURCHASED | MAR. 2012 | MAR. 2011 | Dec. 2011 - Mar. 2012 | Dec. 2010- MAR 2011 |
|-----------------------------|-------------|-------------|-----------------------|---------------------|
| 1 year Dog Tags | 1735 | 2097 | 7432 | 7605 |
| 1 year Cat Tags | 934 | 847 | 3879 | 3699 |
| 3 year Dog Tags | 1094 | 994 | 4365 | 3320 |
| 3 year Cat Tags | 154 | 197 | 648 | 699 |
| Tags Issued Free | 366 | 339 | 1369 | 1195 |
| Replacement Tags | 11 | 12 | 67 | 75 |
| Total Number of Tags | 4294 | 4486 | 17760 | 16593 |

| SHELTER ACTIVITY | March 2012 | March 2011 | Dec. 2011 - MAR. 2012 | Dec. 2010- MAR. 2011 |
|--------------------------|------------|------------|-----------------------|----------------------|
| Animals Admitted | 38 | 65 | 119 | 146 |
| Cats | 5 | 19 | 20 | 34 |
| Dogs | 32 | 42 | 96 | 105 |
| Other | 0 | 4 | 3 | 7 |
| Animals Reclaimed | 17 | 20 | 42 | 47 |
| Animals Adopted | 6 | 26 | 18 | 44 |
| Animals Placed w/Rescue | 6 | 4 | 18 | 14 |
| Carry Over to Next Month | 7 | | | |
| Euthanized | 2 | 15 | 26 | 41 |
| Dogs | 1 | 8 | 19 | 27 |
| Cats | 1 | 7 | 7 | 14 |
| DOA | 0 | 0 | 0 | 0 |

| BITE REPORT | March 2012 | March 2011 | Dec. 2011 - Mar. 2012 | Dec. 2010- Mar 2011 |
|------------------------|-------------------|-------------------|------------------------------|----------------------------|
| Persons Bitten | 84 | 82 | 232 | 239 |
| Dogs | 68 | 59 | 182 | 167 |
| Cats | 7 | 16 | 30 | 40 |
| Miscellaneous | 1 | 7 | 20 | 32 |
| Stray Dog & Cat Biters | 12 | 9 | 22 | 22 |
| Specimens Taken to Lab | 17 | 14 | 38 | 56 |

| BITES BY LOCATION | | Victim Residence | Animals with Active Registration |
|--------------------------|--------------------|-------------------------|---|
| Bites | Animal Type | | |
| 27 | Dog | Aurora | 17435 |
| 1 | Cat | Aurora | 6188 |
| 5 | Bat | Aurora | n/a |
| 2 | Dog | Batavia | 6655 |
| 1 | Cat | Batavia | 3206 |
| 4 | Dog | Carpentersville | 5,821 |
| 1 | Cat | Carpentersville | 2393 |
| 3 | Dog | Elburn | 2,900 |
| 1 | Dog | East Dundee | 535 |
| 11 | Dog | Elgin | 16425 |
| 2 | Cat | Elgin | 8055 |
| 4 | Dog | Geneva | 6546 |
| 1 | Dog | Gilberts | 1572 |
| 2 | Dog | North Aurora | 3568 |
| 1 | Bat | North Aurora | n/a |
| 1 | Dog | Oswego | 40 |
| 7 | Dog | Saint Charles | 13454 |
| 1 | Cat | Saint Charles | 6018 |
| 1 | Bat | Saint Charles | n/a |
| 3 | Dog | South Elgin | 5750 |
| 1 | Cat | South Elgin | 2587 |
| 2 | Dog | Sugar Grove | 2713 |
| 1 | Bat | West Dundee | n/a |
| | | | |

1

out of county

| REASONS FOR EUTHANASIA | March 2012 | | March 2011 | | Dec. 2011 - Mar. 2012 | | Dec. 2010- Mar. 2011 | |
|---------------------------------------|-------------------|-------------|-------------------|-------------|----------------------------------|-------------|---------------------------------|-------------|
| | Dogs | Cats | Dogs | Cats | Dogs | Cats | Dogs | Cats |
| Behavior | 0 | 0 | 5 | 5 | 5 | 0 | 16 | 6 |
| Serious Injuries | 0 | 0 | 0 | 0 | 1 | 0 | 0 | 0 |
| Sick/Not Curable | 0 | 1 | 0 | 0 | 0 | 3 | 0 | 1 |
| Aggressive | 1 | 0 | 3 | 0 | 11 | 4 | 11 | 1 |
| Age | 0 | 0 | 0 | 0 | 2 | 0 | 0 | 0 |
| Rabies spec | 0 | 0 | 0 | 0 | | 0 | 0 | 1 |
| Feral | 0 | 0 | 0 | 2 | 0 | 0 | 0 | 5 |
| Total | 1 | 1 | 8 | 7 | 19 | 7 | 27 | 14 |

**Kane County
Budget Worksheet Report**

| Account Number | Description | 2011 Actual Amount | 2012 Amended Budget | 2012 Actual Amount | 2012 Estimated Amount |
|---|----------------------------------|-----------------------|------------------------|-----------------------|--------------------------|
| Fund: 290 - Animal Control | | | | | |
| <u>Revenues</u> | | | | | |
| Department: 500 - Animal Control | | | | | |
| Sub-Department: 000 - Revenues | | | | | |
| REV30 - Charges for Services | | | | | |
| 34580 | Registration and Tag Fees | 815,643.90 | 725,000.00 | 104,397.00 | 792,625.00 |
| 34590 | Animal Transportation Fees | 2,050.00 | 2,500.00 | 735.00 | 2,137.00 |
| 34600 | Animal Pickup Fees | 15,104.50 | 15,000.00 | 3,952.50 | 14,897.00 |
| 34610 | Impound Fees | 6,978.00 | 6,500.00 | 1,865.00 | 7,230.00 |
| 34620 | Adoption Fees | 19,509.00 | 18,000.00 | 6,035.00 | 19,022.00 |
| 34630 | Microchip Fees | 2,111.00 | 2,500.00 | 632.50 | 2,345.00 |
| Account Classification Total: REV30 - Charges for Services | | \$861,396.40 | \$769,500.00 | \$117,617.00 | \$838,256.00 |
| REV35 - Fines | | | | | |
| 36100 | Court Fines | 8,230.00 | 6,000.00 | 2,277.38 | 6,327.00 |
| Account Classification Total: REV35 - Fines | | \$8,230.00 | \$6,000.00 | \$2,277.38 | \$6,327.00 |
| REV40 - Reimbursements | | | | | |
| 37220 | Capital Assessment Reimbursement | 0.00 | 0.00 | 0.00 | 0.00 |
| 37230 | Service Reimbursements | 30,200.00 | 35,000.00 | 5,100.00 | 29,582.00 |
| 37900 | Miscellaneous Reimbursement | 285.00 | 100.00 | 110.00 | 223.00 |
| Account Classification Total: REV40 - Reimbursements | | \$30,485.00 | \$35,100.00 | \$5,210.00 | \$29,805.00 |
| REV45 - Interest Revenue | | | | | |
| 38000 | Investment Income | 1,824.26 | 1,000.00 | 194.33 | 1,342.00 |
| 38010 | Investment Income- Govt Security | 0.00 | 0.00 | 0.00 | 0.00 |
| Account Classification Total: REV45 - Interest Revenue | | \$1,824.26 | \$1,000.00 | \$194.33 | \$1,342.00 |

| | | | | | |
|---|--------------------------|---------------------|---------------------|---------------------|---------------------|
| REV50 - Other | | | | | |
| 38500 | Rental Income | 0.00 | 0.00 | 0.00 | 0.00 |
| 38520 | General Donations | 1,787.76 | 1,000.00 | 395.00 | 1,523.00 |
| 38530 | Auction Sales | 5,350.00 | 0.00 | 0.00 | 0.00 |
| 38540 | Animal Alteration Refund | 0.00 | 0.00 | 0.00 | 0.00 |
| 38900 | Miscellaneous Other | 7,846.00 | 1,200.00 | 560.00 | 2,937.00 |
| Account Classification Total: REV50 - Other | | \$14,983.76 | \$2,200.00 | \$955.00 | \$4,460.00 |
| REV60 - Cash on Hand | | | | | |
| 39900 | Cash On Hand | 0.00 | 166,192.00 | 0.00 | 0.00 |
| Account Classification Total: REV60 - Cash on Hand | | \$0.00 | \$166,192.00 | \$0.00 | \$0.00 |
| Sub-Department Total: 000 - Revenues | | \$916,919.42 | \$979,992.00 | \$126,253.71 | \$880,190.00 |
| Department Total: 500 - Animal Control | | \$916,919.42 | \$979,992.00 | \$126,253.71 | \$880,190.00 |
| Revenues Total | | \$916,919.42 | \$979,992.00 | \$126,253.71 | \$880,190.00 |
| Fund Revenue Total: 290 - Animal Control | | \$916,919.42 | \$979,992.00 | \$126,253.71 | \$880,190.00 |
| Revenue Grand Totals: | | \$916,919.42 | \$979,992.00 | \$335,660.81 | \$0.00 |

Respondents

| Animal control program | Name | Phone | Email | Website |
|---|------------------------------------|----------------|---|---|
| Carroll County | Joe Grim | (815) 244-9705 | cacoanco@yahoo.com | www.carrollcounty.petfinder.com |
| Champaign County | Stephanie Joos | (217) 384-3798 | sjoos@co.champaign.il.us | |
| Clay County Animal Control | Lauren Pettit | (618) 662-4406 | lpettit@healthdept.org | www.claycountyshester.com |
| Cook County Animal and Rabies Control | Dr. Donna M. Alexander | (708) 974-6140 | donna.alexander@cookcountyil.gov | www.cookcounty.com |
| DeKalb County Animal Control | Greg Maurice | (815) 758-6673 | gmaurice@dekalbcounty.org | www.dekalbcountyhealthdepartment.org |
| DuPage County | Kerry Vinkler | (630) 407-2808 | kerry.vinkler@dupageco.org | www.dupageco/animalcontrol.com |
| Iroquois County Animal Control | James H. Finnell DVM Administrator | (815) 432-6985 | finnegan1931@hotmail.com | NA |
| Jo Daviess County Animal Control | Lori Kinnaman | (815) 591-2625 | lkinnaman@jodaviess.org | jodaviess.org |
| Kane County Animal Control | Kimberly Rudloff | (630) 208-3814 | rudloffkimberly@co.kane.il.us | www.co.kane.il.us/animalcontrol |
| Knox County Animal Control | Deputy Roger Underwood | (309) 345-3735 | KCKN24@ci.galesburg.il.us | www.knoxcountysheriffil.com |
| Lake County Animal Care and Control | Robin Van Sickle | (847) 949-9925 | rvansickle@lakecountyil.gov | http://lakecountyil.gov/Health/resources/Pages/AnimalControl.aspx |
| Lawrence County Animal Control | Mark Chamness | (618) 928-2392 | lawcoacs@hotmail.com | Our Web resources http://www.petfinder.com/shelters/IL390.html http |
| Macon County Animal Control | Kristen Horton | (217) 425-4508 | khorton@sheriff-macon-il.us | macon county sheriff |
| McDonough County Animal Control | Vicky Van Trump | (309) 837-2989 | mcas@macomb.com | none |
| McHenry County Animal Control and Adoption | Dr. Lisa Lembke | (815) 334-4940 | ejlembke@co.mchenry.il.us | http://www.co.mchenry.il.us/departments/health/Pages/ACindex.aspx |
| Montgomery County Animal Control | Nancy J. Richardson | (217) 532-3334 | montgomerycountyanimalcontrol@yahoo.com | |
| Morgan County Animal Control | Lisa Myers | (217) 245-4015 | dogs8@frontier.com | |
| Naperville Animal Control | Joanne Aul | (630) 305-5996 | aulj@naperville.il.us | www.naperville.il.us/animalcontrol.aspx |
| Peoria County Animal Control | Lauren Malmberg | (309) 672-2445 | lmalmberg@peoriacounty.org | www.peoriacounty.org/pcaps |
| Richland County Animal Control | Sandy Millman | (618) 393-7526 | richlandcountyanimals@yahoo.com | see us on petfinder.com |
| Sangamon County Animal Control | Greg Largent | (217) 535-3065 | gregl@co.sangamon.il.us | scdph.org |
| Wayne County Humane Society and Animal Services | Paula Thompson | (618) 847-4012 | wchsshelter91@yahoo.com | wc.petfinder.org |
| Winnebago County Animal Services | Jennifer Stacy | (815) 319-4100 | jstacy@wincoil.us | wcasrock.org |

What is your situation regarding veterinary assistance? - Other

Veterinary As Needed
Accident cases taken to Veterubary Clinic
Pay per visit when needed

Do you routinely vaccinate and do health checks on "adoptable" animals coming through the shelter? - Comment:

ALL animals entering the shelter are vaccinated if they can be handled safely
All young dogs and puppies going to adoption agency are vaccinated.
Best to vac pups first thing
Just recently implemented new vaccine policy. Still working out details.
we do not house adoptable animals
we only vaccinate animals returned to their owners. all adoptable animals are transferred to a shelter/rescue group that takes care of the vaccinations and health checks.

Does your County Shelter take in all strays and owner surrender cats and dogs? - Comment:

As long as we have room
Only for County residents
Owner release on as room available basis
We are an open admission animal control; however if we have no cage space, we will turn away cats. Please note that our dog capacity is minimum as we can double up dogs but not cats.

If not, does your County Shelter work with a humane society to intake owner surrenders? - Comment:

Dogs Only
If we are full, we refer owners elsewhere or put them on a waiting list
We have an "arrangement" with Welfare League to take adoptable dogs.
We intake owner surrenders

What is your policy regarding animals that become ill soon after adoption. - Other (please specify)

Depending on situation, have exchanged animal or refunded fee
exceptions are made
Free pet health insurance for all adoptions, refund/replace within 10 days of adoption
If animal has feline leukemia or will die on the adopter then will replace animal
Refund or replacement for serious health issues
that responsibility/adoption agreement is left to the adoption agency
We will Euthanasia for free

Will treat animals that become ill within 14 days of going home

How do you sanitize the shelter? - Open-Ended Response

1x/day plus spot clean for dog and cat kennels. We purchase Vet and Kennel Disinfectant/Virucidal from Pike Systems, Inc. The ammonium chlorides of dimethyl and ethylbenzyl are each 4.5% of the solution while 91% is inert material.

Bleach - daily - donations/local stores

Bleach Quaternary Disinfectant

Bleach & Pine-sol

bleach and soap daily

Cat cages- bleach/water 32:1 ration Bleach from Viking Chemical Dog cages-Trifectant (Midwest Vet Supply) or Quaternary ammonia compound (Soap) and bleach/water 32:1 ration. Soap comes from United Lab conquer and bleach daily we purchase the bleach from sam's club and the conquer from Lorenz supplies

Daily cleaning with quaternary cleaner

Everyday Kennel Sol (ACE) Parvo away (chemco) Bleach Wal Mart

HDQ daily or clorox daily

HDQ Neutral

Hi Quat, at least once a day, Power wash, supplied by Corty

kennelson, trifectant

Recently began using Trifectant as daily cleaner.

Solid waste is removed from all enclosures daily and more often if needed. Dog kennels are sprayed down daily using Buckeye Watchdog 256 concentrate metered through a dispensing station; kennel then squeegee'd dry. Cat cages are cleaned as need based on sneezogram on the wall; we try not to swap out bedding and blankets unless soaked in a bodily fluid to reduce stress on the cats. Same quaternary ammonium disinfectant used on the cats. We get the stuff in bulk from Cabay, Inc. a local janitorial supply service.

the kennel is cleaned daily with sanifect plus and bleach mixture. The sanifect plus is purchased through Laport, Inc.

Trifectant

We use bleach and water and they are cleaned at least once a day

Please describe the relationship and how well it works? - Open-Ended Response

any pet owner our department recognizes that has a need for pet assistance is referred to the various organizations we either work with or are aware of.

Come to us if interested in a pet and we actively seek them if a pet fits their usual criteria

Distribute information provided to us by agencies in low cost vaccination clinics. Works well.

I have several humane organizations that I deal with, mostly to help place dogs, and I use a cat rescue when I need to. It works well as I get along well with local humane groups

I try to send people who need help to them.

It's a liquid that neutralize's the odor and helps if there's a Parvo outbreak.

Shelter Friends 501c3 started to help with needs of animals at RCAC shelter. Been great!!

The rescue organization obtains fostering licenses through our animal control program. When a pet needs to be fostered, it goes to one of these homes. We hold adoption events at a local farm/feed store where many dogs and cats find homes. The rescue group sometimes covers the cost of treating sick shelter animals. The relationship works well for the most part, although there is some disagreement between the two groups on how to run the shelter, and how money is best spent.

We contact breed rescues, local humane societies or other shelters for placements that we are not able to spend more time with (behavioral issues usually)

We have informal networking with most of the other rescues in the county, and some out of county. I'm not entirely sure what you're asking for here... We refer people to a list of McHenry County veterinarians, none of

We have numerous relationships with groups -

We send all adoptable dogs to the humane society her in Champaign County and all adoptable cats to Cattails Feline Rescue

We transfer adoptable animals to local rescues and other area limited admission shelters. It works well after the rescues understand the role and limitations of animal care and control.

Working relationship with local shelter and spay/neuter clinic. S/N clinic performs S/N services for us. Shelter contacts us regarding strays. Share statistics and information for grant proposals designed to lower unwanted populations.

Please explain any nuances to the fee amounts - Open-Ended Response

\$10 late fee for registrations received after 30 days. After 30 days, a \$25 ordinance violation fee is assessed for failure to register. If an animal is medically exempt from surgical sterilization (proven by a vet statement) an owner can receive the rabies tag for the altered tag fee.

\$10.00 late fee if not renewed by vaccine expiration date.

20 no proof rabies

Adoption fee includes S/N, microchip, routine vaccinations. Adoption fee \$90 for cats and \$120 for dogs. Impoundment considered the same as a pick up - progresses through 4 impoundments - \$50, \$150, \$200, \$250. Allow 30 days after registration to accomplish S/N to be eligible for a refund of difference. Dogs and cats unaltered but under 1 year of age receive altered fee to give owner chance to accomplish S/N.

Adoption fee includes spay/neuter, vaccinations and microchip

Adoption fee includes vaccination, microchipping, and sometimes deworming.

Adoption fees vary: \$75 cats, \$80 to \$90 dogs. Fee includes rabies, wormer, flea treatment, parvo/dist, microchipping. We pay \$50 of S/N costs if done at local vet.

adoption includes vaccines, health exam, alteration, microchip, bag of food, registration tag Dogs are 110, cats 40, kittens 85 Impoundment fees depends on what offense, with or without id, boarding is \$12 per day. Reclaims with no rabies shot is charged \$12 for shot and equivalent registration tag. We also charge Public Safety fee for at large dogs. Impoundment fee depends on identification and how many offenses-\$15 is minimum Microchip is for reclaims and adoptions. Double registration fees if over 30 days Pick up for deceased dog or cat is 45/35
Cat adoption \$75; Dog, \$100; Board is \$10/day; Reclaim fee \$50 if v/r or \$100 if not;
if microchipped, deduct \$5 senior citizen discount if age 62 or older
No graduated scale for citations issued within our municipality.
spay/neuter for cats \$40 Vaccinations \$8.00 each late fee for registrations \$5.00

How do you collect the registration fees? - Other (please specify)

All vets issue tags in our county; most registration collected from vets.
Animal Control part of Health Department

If your veterinary providers distribute rabies tags, please explain the arrangement you have with the veterinarians.

City collects and puts money into account for animal control
give them tags and they mailback fee to us
Rabies tag are numbered and assigned to specific animal hospitals (for tracking purposes). The vets issue the tags and collect the appropriate tag fee. The vets submit rabies certificates monthly along with the collected tag fee's or get invoiced for the tag fee's. Vets are allowed to charge the owners up to a \$2 convenience fee for selling our tags.
Sell tags to vets at above prices.
Tags are provided to the vets, they collect fees and they are given \$1 per tag at the end of each month
The veterinarians are given tags up front and pay as they go in monthly installments.
The vets are issued tags that they sell. Each month they fill out a claim form and return registration slips with payment less \$1 for each tag sale
Vets given supply of tags. They collect registration fees and remit full amount back to dept. Unacceptable compliance rates lead to vet purchasing tags from us and recovering their own expense.
We deliver tags each week and collect registration forms and money. Vets do not keep any of the fee.
We distribute tags to vaccine providers as well as sell them here at MCAC. Vets collect an extra \$2 per tag from their client and remit registration fee in full to MCAC
We do not deal with tags
we have vets offices pay at time we deliver tags they pay full cost of tags
We pay them 50 cents per tags issued through their clinic.
we provide tags to vets, they sell, distribute revenue from sales less \$0.90 per tag to us, with monthly reconciliation.
We provide tags to vets. They collect fees and send to us with certificates on monthly basis. No payment to vets for doing this.

How do you enforce consequences of non-payment?

Administrative Tickets
After 120 days, where no monies have been received, outstanding balances over \$20 are sent to collection agency.
Collections through the Finance Department.
Court Summons
Dog owner is served with a notice to appear
Fines
If dog found running at large or involved in incident then ticket for no registration (\$10.00 late fee), or notice to appear in court
Issue ticket; impound dog
Notice to appear in court and a docket number is made.

Please provide any specifics that might help.

\$100 to municipality outside of structure; do not charge for bats in structure due to rabies control
\$5/day trap rent plus deposit plus \$10/animal for removal
Each Call

How are tickets adjudicated?

Administrative hearing
Administrative Hearings
Circuit Court
City of Flora utilizes City Hall All other municipalities and unincorporated areas must use the Clay County Courthouse in Louisville
City ticket city attorney ,county and state States Attorney
Court
Court hearing
court system
court system
Currently in Circuit Court however we are in the process of implementing Administrative Adjudication where all tickets will be heard through a hearing officer. We hope to start this end of April, beginning of May.
Filed in ordinance court before the Tenth Judicial Circuit Court

Hearing officer(rabies vaccination and registration violations) and judge(local and state ordinances)

If not paid by due date, asst states attorney represents us in monthly court date.

In court

states atty for county and city atty for city

Through the State's Attorney

Traffic court

Traffic court

Which of the following, if any, do your animal control officers have authority to carry? - Other

air horn

Firearm is kept in truck but not concealed/carried on person.

lariat; one carries a net gun

We will soon be certified to carry spray and hopefully a bite stick.

CACI hopes to develop a full curriculum of training similar to NACA at a much lower cost. Would this be of interest? - Comment:

Current Warden has twenty years experience

I am already NACA certified and will be attending level 3 in the Summer

I can help teach.

Please list training areas in which you or your staff would be interested in attending? - Open-Ended Response

ALL

any

Bite Stick training tazer training Verbal Judo

Chemical Capture, Euthanasia

Chemical immobilization, handling vicious animals, exotic animal handling, investigation, reporting

Humane investigations Pet population control Personnel management Disease control in shelter environment

Investigation and prosecuting cruelty cases. More specifically effective report writing and evidence gathering.

Large scale impoundments Disaster Planning: Hands-On/Actual Plan Exotic Housing/Handling-Wildlife Statutes vs Animal Control Act

Legal aspects, State consistency (Enforcement of Animal Control Act)

Protective weapon use, anything to do with health of shelter animals

Rules of evidence Cruelty investigations First and fourth amendment rights/due process Verbal judo to ramp down conflict Breed identification/description of animals Aging an animal based on dentition First aid

animal triage Euthanasia by injection/continuing euthanasia education required for 2014 euthanasia tech licenses Report writing for officers/wardens Chain of evidence Administrative code that supports state law (boy

are there a couple of surprises in there!) ...and more, but this is a good start.

self defense/dealing with difficult people state laws animal behavior

tranquilizer gun and Euthanasia classes

Tranquilizer/ Bite stick Level 1 & 2

What are the most significant barriers that would prevent you or your staff from attending trainings? - Open-Ended Response

Call Volume

cost

Cost Distance Time of Year

Cost Scheduling conflicts due to minimal staffing

Cost, location of training

County won't pay for someone to cover officer's hours while absent from work.

Distance and Budget

distance to training location and cost

employee turnover and the ability to staff while at training

Hectic Schedule

location, location, location cost if these could be given on site as inservice training...

Location, travel time

Need & Cost

time

Time and help

Training barriers

We can do day trips, but overnight trips are difficult to have approved at this time

Animal Control Survey Data Formatted

What best describes your Animal Control Program structure?

- 9 Stand alone county department
- 6 Part of county health department
- 2 Part of county law enforcement department
- 1 Part of Highway Department
- 1 County board the boss city /county money
- 1 Under the Convalescent Center
- 1 Privately operated sub contracted with County and City
- 1 As a COUNTY control, we cover the whole of Morgan County.
- 1 Part of city law enforcement department

What is your situation regarding veterinary assistance?

- 8 Veterinarian on staff
- 11 Veterinarian contracted
- 4 As needed or other

| Count | Min | Mean | Median | Max |
|-------|--------|---------|---------|-----------|
| 22 | 10,000 | 417,441 | 106,682 | 5,194,675 |
| 23 | 1 | 8 | 3 | 34 |
| 23 | 1,820 | 2,035 | 2,080 | 2,080 |
| 22 | 0.01 | 0.13 | 0.12 | 0.35 |
| 17 | 9 | 61 | 37 | 243 |
| 17 | - | 48 | 31 | 147 |
| 13 | 1960 | 1995 | 1996 | 2009 |
| 21 | - | 901 | 472 | 3,251 |
| 21 | - | 834 | 453 | 4,118 |
| 20 | - | 304 | 96 | 1,492 |
| 20 | - | 437 | 131 | 2,497 |
| 20 | - | 217 | 111 | 839 |
| 20 | - | 189 | 24 | 991 |

How large is the jurisdiction you serve (human population)?

How many full time equivalent (FTE) employees work in your animal control program?

How many hours equals one full time equivalent (FTE) employee in your animal control program? Annualized AC Hrs Per Capita

How many dog kennels does your shelter have available?

How many cat cages does your shelter have available?

When was your shelter built?

Approximately how many dogs did your agency impound last year?

Approximately how many cats did your agency impound last year?

Approximately how many dogs did your agency euthanize last year?

Approximately how many (non-feral) cats did your agency euthanize last year?

Approximately how many dogs did your agency adopt last year?

Approximately how many cats did your agency adopt last year?

Please enter the percentage of revenue you receive from each of the following sources:

| | | | | | |
|----|---|-------|-------|--------|------------------------------|
| 14 | - | 4.92 | 2.14 | 23.62 | Adoptions |
| 14 | - | 0.93 | 0.50 | 3.00 | Boardings |
| 13 | - | 0.94 | 0.47 | 5.00 | Donations |
| 14 | - | 13.45 | 6.50 | 46.00 | Municipal contracts |
| 14 | - | 4.15 | 2.85 | 10.00 | Pick up / impound fees |
| 15 | - | 61.14 | 65.00 | 100.00 | Registration fees |
| 15 | - | 20.18 | 4.72 | 95.00 | Taxes / other county support |
| 13 | - | 3.21 | - | 18.00 | Other |

How much were your total expenditures for animal control in your most recent complete fiscal year?

16 \$ 6,000 \$ 734,492 \$ 416,900 \$ 3,017,974

What is your charge for:

| | | | | | |
|----|----------|----------|----------|-----------|---------------------------------------|
| 13 | \$ - | \$ 75.69 | \$ 90.00 | \$ 200.00 | Adoption |
| 15 | \$ - | \$ 15.47 | \$ 15.00 | \$ 35.00 | Microchipping |
| 16 | \$ - | \$ 35.63 | \$ 25.00 | \$ 100.00 | Impoundment |
| 14 | \$ 20.00 | \$ 49.29 | \$ 50.00 | \$ 75.00 | Pick up |
| 18 | \$ - | \$ 22.61 | \$ 18.50 | \$ 50.00 | Rabies Tag: Unaltered, one year tag |
| 18 | \$ - | \$ 11.00 | \$ 10.00 | \$ 25.00 | Rabies Tag: Altered, one year tag |
| 16 | \$ - | \$ 56.75 | \$ 41.00 | \$ 150.00 | Rabies Tag: Unaltered, three year tag |
| 16 | \$ - | \$ 33.50 | \$ 25.00 | \$ 108.00 | Rabies Tag: Altered, three year tag |

How do you collect the registration fees?

- 11 Animal control facility
- 0 Animal shelter (if different)
- 14 Veterinary offices
- 11 Through the mail
- 0 County Clerk's office
- 1 Municipal Clerk's office
- 0 Police station
- 1 Sheriff's department
- 3 Health department
- 3 Other (please specify)

Do you charge a trap deposit fee when you place a live trap at a location?

Yes 3 No 14

How much is your trap deposit fee?

3 \$ 25.00 \$ 41.67 \$ 50.00 \$ 50.00

Do you loan out traps to homeowners / occupants / complainants?

Yes 12 No 6

Do you charge a trap deposit fee when you loan the trap?

Yes 4 No 8

How much?

4 \$ 25.00 \$ 43.75 \$ 50.00 \$ 50.00

How many bills do you send to each owner for renewal registration fees?

15 - 1.47 1.00 3.00

For those that are noncompliant with registration fee renewal, is there any consequence for non-payment?

Yes 9 No 7

Do your animal control officers handle wildlife / nuisance complaints?

Yes 11 No 7

Do you charge extra?

Yes 3 No 8

How much?

3 \$ 10.00 \$ 45.00 \$ 25.00 \$ 100.00

Who do you charge?

2 Homeowner / Occupant
1 Municipal Entity

Do your animal control officers have authority to issue tickets?

Yes 17 No 1

Which of the following, if any, do your animal control officers have authority to carry?

14 Bite stick/baton
11 Tranquilizer gun
2 Firearm
6 Knife
12 Police radio
13 Spray
4 Taser
4 Other (please specify)

Does your animal control program operate a shelter?

Yes 18 No 5

Do you routinely vaccinate and do health checks on "adoptable" animals coming through the shelter?

Yes 14 No 4

Does your County Shelter take in all strays and owner surrender cats and dogs?

Yes 16 No 3

If your County Shelter does not take in all strays and owner surrender cats and dogs, does your County Shelter work with a humane society to intake owner surrenders?

Yes 6 No 2

If your County Shelter works with a humane society to intake owner surrenders is it an informal agreement or is there an existing contract?

Contractual 4 Informal 6

What is your policy regarding animals that become ill soon after adoption?

9 Sign waiver upon adoption that shelter makes no health guarantees and accepts no responsibility
4 Offer to refund fees
6 Offer to replace animal
14 Other (please specify)

Does your County Shelter take in all strays and owner surrender cats and dogs?

19 Yes 16 No 3

If your County Shelter does not take in all strays and owner surrender cats and dogs, does your County Shelter work with a humane society to intake owner surrenders?

8 Yes 6 No 2

If you work with a human society or pet assistance organization for strays and owner surrender cats and dogs, is it an informal agreement or is there an existing contract?

10 Contractual 4 Informal 6

Do you work closely with pet assistance organizations?

20 Yes 16 No 4

CACI hopes to develop a full curriculum of training similar to NACA at a much lower cost. Would this be of interest?

Yes 16 No 0

May we share your individual responses with the other local animal controls?

Yes 18 No 0



AGENDA ITEM EXECUTIVE SUMMARY

Agenda Item #

- Resolution
 Ordinance

Name

Resolution: Authorization Exception to the County Financial Policies Regarding Personnel Hiring and Replacement: Shelter Programs and Operations Manager (formerly Kennel Manager)

Presenter/Sponsor:

Kimberly W. Rudloff, DVM, Veterinarian/Administrator, Kane County Animal Control

Budget Information:

Was this item budgeted?

- Yes No N/A

Appropriation Amount:

If not budgeted, explain funding source

SUMMARY:

The Kane County Animal Control Department is responsible for the enforcement of the Animal Control Ordinance of Kane County; and has built an animal control facility for the purpose of providing needed resources for the Department in carrying out its mission, specifically to be used as a shelter for seized, stray, homeless, abandoned, or unwanted dogs or other animals.

The renamed Shelter Programs and Operations Manager (SPOM) position, oversees the daily operations of the kennel and supervises a team of Kennel Assistants to ensure a high level order and cleanliness to prevent spread of diseases. The SPOM is responsible for the health and safety of all animals in custody ensuring all animals receive medication as directed by a veterinarian and receive medical attention as necessary. Included duties will be maintaining records on all inhouse patients, inventory control, and safety of all staff and clients when entering the kennel area. In addition, the SPOM will be responsible for new program implementation and maintenance. This would embody programs such as volunteers and staff in-house education to name a few.

The Administrator of Kane County Animal Control is requesting an exception to the hiring moratorium as the continuance of vacancies in this position will have a negative operational impact on the department's ability to successfully manage operations and carry out its mission.

Attachments:

Detailed information available from :

Staff Name: Kimberly Rudloff, DVM

Phone: 630-208-3814

Resolution/Ordinance Tracking:

Assigned Committee: Public Health

Passed

Sent to:

on:

If Other, specify:

Committee Remarks:

Next Committee:

Sent to:

on:

If Other, specify:

Committee Remarks:

Next Committee:

Sent to:

on:

Committee Remarks:

County Board Date:

STATE OF ILLINOIS

COUNTY OF KANE

RESOLUTION NO. 12-

**AUTHORIZING EXCEPTION TO THE COUNTY FINANCIAL POLICIES REGARDING PERSONNEL
HIRING AND REPLACEMENT: SHELTER PROGRAMS AND OPERATIONS MANAGER
(FORMERLY KENNEL MANAGER)**

WHEREAS, the Kane County Animal Control Department is responsible for the enforcement of the Animal Control Ordinance of Kane County; and

WHEREAS, Kane County has built an animal control facility for the purpose of providing needed resources for the Department in carrying out its mission, specifically to be used as a shelter for seized, stray, homeless, abandoned, or unwanted dogs or other animals; and

WHEREAS, currently staffing levels for operations of the shelter, due to voluntary terminations have fallen below those needed to provide care to animals in the shelter; and

WHEREAS, the Kane County Animal Control Department requires hiring of the Shelter Program and Operations Manager (formerly known as Kennel manager) to fill the position vacated in January 2012; and

WHEREAS, this position with a salary range of \$39,900 through \$45,000, has been included in the FY12 budget and therefore passage of this resolution does not require a budget amendment for fiscal year 2012; and

WHEREAS, on September 9, 2008 the Kane County Board had deemed it necessary to adopt by Resolution a moratorium on the hiring of new County personnel and the replacement of existing or future personnel vacancies; and

WHEREAS, the Executive Director of the Kane County Health Department and the Administrator of the Kane County Animal Control Department have requested the Kane County Board to allow exception to the hiring moratorium as the continuance of a shortage of staff will have a negative operational impact on the Department's ability to efficiently and effectively conduct the operations of the shelter.

NOW, THEREFORE, BE IT RESOLVED by the Kane County Board that the Kane County Animal Control Department be allowed to hire a replacement to fill the Kennel Manager vacancy within the department.

| Line Item | Line Item Description | Was personnel/item/service approved in original budget or a subsequent budget revision? | Are funds currently available for this personnel/item/service in the specific line item? | If funds are not currently available in the specified line item, where are the funds available? |
|-------------------|-----------------------|---|--|---|
| 290-500-500.40000 | Salary & Wages | Yes | Yes | N/A |

Passed by the Kane County Board on _____

John A. Cunningham
Clerk, County Board
Kane County, Illinois

Karen McConnaughay
Chairman, County Board
Kane County, Illinois

Vote:

Yes _____

No _____

Voice _____

Abstentions _____



AGENDA ITEM EXECUTIVE SUMMARY

Agenda Item #

- Resolution
 Ordinance

Name

Resolution: Authorization Exception to the County Financial Policies Regarding Hiring and Replacement: Animal Control Warden

Presenter/Sponsor:

Kimberly W. Rudloff, DVM, Veterinarian/Administrator, Kane County Animal Control

Budget Information:

Was this item budgeted?

 Yes No N/A

Appropriation Amount:

If not budgeted, explain funding source

SUMMARY:

The Kane County Animal Control Department is responsible for the enforcement of the Animal Control Ordinance of Kane County; and has built an animal control facility for the purpose of providing needed resources for the Department in carrying out its mission, specifically to be used as a shelter for seized, stray, homeless, abandoned, or unwanted dogs or other animals.

The Animal Control Warden is responsible to answer all calls pertaining to stray or injured dogs, bite cases, and possible rabid wildlife. They pickup and impound stray dogs, transport specimens of biting animals to the State Lab, and investigates complaints of violations to the animal ordinance and issues citation to owners violating such laws.

The Administrator of the Kane County Animal Control is requesting an exception to the hiring moratorium as the continuance of vacancies in this position will have a negative operational impact on the Department's ability to successfully manage operations and carry out its mission.

Attachments:

Detailed information available from :

Staff Name:

Kimberly W. Rudloff, DVM

Phone:

630-208-3814

Resolution/Ordinance Tracking:

Assigned Committee:

Public Health

Passed

Sent to:

on:

If Other, specify:

Committee Remarks:

Next Committee:

Sent to:

on:

If Other, specify:

Committee Remarks:

Next Committee:

Sent to:

on:

Committee Remarks:

County Board Date:

STATE OF ILLINOIS

COUNTY OF KANE

RESOLUTION NO. 12-

**AUTHORIZING EXCEPTION TO THE COUNTY FINANCIAL POLICIES REGARDING PERSONNEL
HIRING AND REPLACEMENT: ANIMAL CONTROL WARDEN**

WHEREAS, the Kane County Animal Control Department is responsible for the enforcement of the Animal Control Ordinance of Kane County; and

WHEREAS, Kane County has built an animal control facility for the purpose of providing needed resources for the Department in carrying out its mission, specifically to be used as a shelter for seized, stray, homeless, abandoned, or unwanted dogs or other animals; and

WHEREAS, currently staffing levels for operations of the shelter, due to voluntary terminations and interim appointments have fallen below those needed to provide care to animals in the shelter; and

WHEREAS, the Kane County Animal Control Department requires hiring of the Animal Control Warden to fill the position vacated in February 2012; and

WHEREAS, this position with a salary range of \$1,745 through \$2,635 monthly (40 hour work week), has been included in the FY12 budget and therefore passage of this resolution does not require a budget amendment for fiscal year 2012; and

WHEREAS, on September 9, 2008 the Kane County Board had deemed it necessary to adopt by Resolution a moratorium on the hiring of new County personnel and the replacement of existing or future personnel vacancies; and

WHEREAS, the Executive Director of the Kane County Health Department and the Administrator of the Kane County Animal Control Department have requested the Kane County Board to allow exception to the hiring moratorium as the continuance of a shortage of staff will have a negative operational impact on the Department's ability to efficiently and effectively conduct the operations of the shelter.

NOW, THEREFORE, BE IT RESOLVED by the Kane County Board that the Kane County Animal Control Department be allowed to hire a replacement to fill the Animal Control Warden vacancy within the department.

| Line Item | Line Item Description | Was personnel/item/service approved in original budget or a subsequent budget revision? | Are funds currently available for this personnel/item/service in the specific line item? | If funds are not currently available in the specified line item, where are the funds available? |
|-------------------|-----------------------|---|--|---|
| 290-500-500.40000 | Salary & Wages | Yes | Yes | N/A |

Passed by the Kane County Board on _____

John A. Cunningham
Clerk, County Board
Kane County, Illinois

Karen McConnaughay
Chairman, County Board
Kane County, Illinois

Vote:

Yes _____

No _____

Voice _____

Abstentions _____