

PUBLIC HEALTH COMMITTEE
Tuesday, January 22, 2013 – 9:00 AM
Building A – County Board Room

AGENDA

- I. Call to Order
- II. Approval of Minutes
 - A. October 23, 2012 Public Health Committee
 - B. January 3, 2013 Special Public Health Committee
- III. Finance/Budget
 - A. Public Health Accounts Payable by G/L Distribution (Enc.)
 - B. Public Health Budget Revenue and Expenditure Reports (Enc.)
 - C. Health Department by Account Classification (Enc.)
 - D. Kane County Purchasing Card Information (Enc.)
 - E. Animal Control Department by Account Classification (Enc.)
- IV. Public Comments on Agenda Items
- V. Executive Director
 - A.
 - 1. Review of Public Health Committee Flash Report (Enc.)
 - 2. Public Health in Kane County presented by Carmella Moran, PhD and David Stone, PhD
 - 3. **RESOLUTION:** Cadence Health Grant Authorization (Enc.)
 - 4. **RESOLUTION:** Renewing Agreement Between Health Department and Hased House (Enc.)
 - 5. **RESOLUTION:** Authorizing Exception To The Financial Policies Regarding Personnel Hiring And Replacement: Community Health Specialist II, Environmental Health Practitioner (Enc.)
 - 6. **RESOLUTION:** Authorizing Exception To The Financial Policies Regarding Personnel Hiring And Replacement: Community Health Specialist II, Kane Kares Nurses (Enc.)
 - B. Office of Emergency Management
 - 1. Monthly Report (Enc.)
 - 2. Monthly Statistics (Enc.)
 - 3. **RESOLUTION:** FY2013 Hazardous Materials Emergency Preparedness Planning Grant (Enc.)
 - 4. **RESOLUTION:** Vehicle Replacement and Budget Adjustment (Enc.)
 - C. Animal Control
 - 1. Monthly Report
 - 2. Statistics Report (Enc.)
 - 3. **ORDINANCE:** 2% Fee Increase for Animal Control Municipalities (Enc.)
 - 4. **RESOLUTION:** Authorizing Exception To The Financial Policies Regarding Personnel Hiring And Replacement: Animal Control Warden (Enc.)
- VII. Old Business
- VIII. Executive Session
- IX. New Business
- X. Public Comments on Non-Agenda Items
- XI. Adjournment

SILVA, Starrett, Allen, Molina, Pollock, Smith, and Taylor

IX. New Business

X. Public Comments on Non-Agenda Items

XI. Adjournment



Public Health Accounts Payable by GL Distribution

Payment Date Range 12/01/12 - 12/31/12

Vendor	Invoice No.	Invoice Description	Status	Held Reason	Invoice Date	Due Date	G/L Date	Received Date	Payment Date	Invoice Amount	
Fund 001 - General Fund											
Department 510 - Emergency Management Services											
Sub-Department 510 - Emergency Management Services											
Account 60010 - Operating Supplies											
8082 - Michael L. Anderson	11/28/12	First Aid cards and roster	Paid by EFT # 16493		12/17/2012	12/17/2012	12/17/2012		12/31/2012	39.00	
							Account 60010 - Operating Supplies Totals		Invoice Transactions 1	<u>\$39.00</u>	
Account 63040 - Fuel- Vehicles											
1360 - Feece Oil Company	1259583/223410	Diesel fuel	Paid by Check # 327284		12/17/2012	12/17/2012	12/17/2012		12/31/2012	48.29	
							Account 63040 - Fuel- Vehicles Totals		Invoice Transactions 1	<u>\$48.29</u>	
									Sub-Department 510 - Emergency Management Services Totals	Invoice Transactions 2	<u>\$87.29</u>
									Department 510 - Emergency Management Services Totals	Invoice Transactions 2	<u>\$87.29</u>
									Fund 001 - General Fund Totals	Invoice Transactions 2	<u>\$87.29</u>
Fund 290 - Animal Control											
Department 500 - Animal Control											
Sub-Department 500 - Animal Control											
Account 50150 - Contractual/Consulting Services											
8412 - The Agency Staffing	68389	Contractual D. Roop 11/30/2012	Paid by EFT # 16451		12/05/2012	12/05/2012	12/05/2012		12/17/2012	258.72	
1615 - Jane L Davis DVM	1012013	Veterinarian services December 2012	Paid by EFT # 16533		12/27/2012	12/27/2012	12/27/2012		12/31/2012	2,000.00	
8412 - The Agency Staffing	68665	Temp staff D. Roop 12/14/2012	Paid by EFT # 16622		12/20/2012	12/20/2012	12/20/2012		12/31/2012	646.80	
8412 - The Agency Staffing	68798	Temp. services Diana Roop 12/21/2012	Paid by EFT # 16622		12/27/2012	12/27/2012	12/27/2012		12/31/2012	646.80	
							Account 50150 - Contractual/Consulting Services Totals		Invoice Transactions 4	<u>\$3,552.32</u>	
Account 52000 - Disposal and Water Softener Srvs											
1216 - Waste Management of Illinois - West	3169653-2011-2	Garbage removal 12/1/2012	Paid by Check # 327143		12/05/2012	12/05/2012	12/05/2012		12/17/2012	67.00	
3044 - DuPage Salt Co/Robert Lenz	18721	Solar salt 12/12/2012	Paid by Check # 327274		12/20/2012	12/20/2012	12/20/2012		12/31/2012	45.66	
							Account 52000 - Disposal and Water Softener Srvs Totals		Invoice Transactions 2	<u>\$112.66</u>	
Account 52010 - Janitorial Services											
8018 - GSF USA, Inc.	INR026122	Janitorial services 12/1/2012-12/31/2012	Paid by EFT # 16550		12/27/2012	12/27/2012	12/27/2012		12/31/2012	300.00	
							Account 52010 - Janitorial Services Totals		Invoice Transactions 1	<u>\$300.00</u>	
Account 52110 - Repairs and Maint- Buildings											
1191 - Alarm Detection Systems Inc	123389X	Quarterly charges December 2012-February 2013	Paid by EFT # 16327		12/05/2012	12/05/2012	12/05/2012		12/17/2012	489.00	
							Account 52110 - Repairs and Maint- Buildings Totals		Invoice Transactions 1	<u>\$489.00</u>	



Public Health Accounts Payable by GL Distribution

Payment Date Range 12/01/12 - 12/31/12

Vendor	Invoice No.	Invoice Description	Status	Held Reason	Invoice Date	Due Date	G/L Date	Received Date	Payment Date	Invoice Amount
Fund 290 - Animal Control										
Department 500 - Animal Control										
Sub-Department 500 - Animal Control										
Account 52160 - Repairs and Maint- Equipment										
5187 - Equipment International, Ltd.	125953	Service washer 12/17/2012	Paid by Check # 327278		12/20/2012	12/20/2012	12/20/2012		12/31/2012	232.50
8388 - Havlicek Geneva Ace Hardware LLC	8037/1	Pressure washer repair 12/10/2012	Paid by EFT # 16553		12/20/2012	12/20/2012	12/20/2012		12/31/2012	17.77
2448 - Standard Industrial and Automotive Equipment Inc	55461	Hose replacement/Pressure washer 12/14/2012	Paid by EFT # 16616		12/20/2012	12/20/2012	12/20/2012		12/31/2012	382.00
							Account 52160 - Repairs and Maint- Equipment Totals		Invoice Transactions 3	\$632.27
Account 60100 - Utilities- Water										
1044 - City of Geneva	198003001AK	Electric/Water/Sewer 12/15/2012	Paid by Check # 327235		12/20/2012	12/20/2012	12/20/2012		12/31/2012	177.79
							Account 60100 - Utilities- Water Totals		Invoice Transactions 1	\$177.79
Account 63010 - Utilities- Electric										
1044 - City of Geneva	198003001AK	Electric/Water/Sewer 12/15/2012	Paid by Check # 327235		12/20/2012	12/20/2012	12/20/2012		12/31/2012	480.84
							Account 63010 - Utilities- Electric Totals		Invoice Transactions 1	\$480.84
							Sub-Department 500 - Animal Control Totals		Invoice Transactions 13	\$5,744.88
							Department 500 - Animal Control Totals		Invoice Transactions 13	\$5,744.88
							Fund 290 - Animal Control Totals		Invoice Transactions 13	\$5,744.88
Fund 350 - County Health										
Department 580 - Health										
Sub-Department 580 - Community Health Resources										
Account 52000 - Disposal and Water Softener Svcs										
1024 - Ice Mountain Direct	02k0122921927	Health - Drinking Water	Paid by Check # 326947		12/04/2012	12/11/2012	12/11/2012		12/17/2012	8.20
1024 - Ice Mountain Direct	02k0122978521	Health - Drinking Water	Paid by Check # 326948		12/04/2012	12/11/2012	12/11/2012		12/17/2012	80.96
							Account 52000 - Disposal and Water Softener Svcs Totals		Invoice Transactions 2	\$89.16
Account 52230 - Repairs and Maint- Vehicles										
3436 - Paul & Bill's Service Center, Inc.	0018283	Health - Vehicle Maintenance	Paid by Check # 327051		12/05/2012	12/11/2012	12/11/2012		12/17/2012	864.49
3436 - Paul & Bill's Service Center, Inc.	0018272	Health - Vehicle Maintenance	Paid by Check # 327051		12/01/2012	12/11/2012	12/11/2012		12/17/2012	320.27
3436 - Paul & Bill's Service Center, Inc.	0018288	Health - Vehicle Maintenance	Paid by Check # 327051		12/06/2012	12/11/2012	12/11/2012		12/17/2012	38.50
3436 - Paul & Bill's Service Center, Inc.	8900 / 614	Health - Vehicle Maintenance	Paid by Check # 327051		11/30/2012	12/11/2012	12/11/2012		12/17/2012	27.90
							Account 52230 - Repairs and Maint- Vehicles Totals		Invoice Transactions 4	\$1,251.16



Public Health Accounts Payable by GL Distribution

Payment Date Range 12/01/12 - 12/31/12

Vendor	Invoice No.	Invoice Description	Status	Held Reason	Invoice Date	Due Date	G/L Date	Received Date	Payment Date	Invoice Amount	
Fund 350 - County Health											
Department 580 - Health											
Sub-Department 580 - Community Health Resources											
Account 52240 - Repairs and Maint- Office Equip											
2291 - Chicago Office Technology Group (COTG)	175649	Health - Monthly Copier Service	Paid by EFT # 16350		12/05/2012	12/11/2012	12/11/2012		12/17/2012	141.51	
1119 - Gordon Flesch Company Inc	in10210299	Health - Monthly Copier Service	Paid by EFT # 16371		12/02/2012	12/11/2012	12/11/2012		12/17/2012	213.40	
3261 - OCE' Imagistics Inc	418193961	Health - Copier Maintenance w/ Supplies	Paid by Check # 327376		12/08/2012	12/20/2012	12/20/2012		12/31/2012	73.00	
3261 - OCE' Imagistics Inc	418193620	Health - Copier Maintenance w/ Supplies	Paid by Check # 327376		12/08/2012	12/20/2012	12/20/2012		12/31/2012	241.40	
3261 - OCE' Imagistics Inc	418193831	Health - Copier Maintenance w/ Supplies	Paid by Check # 327376		12/08/2012	12/20/2012	12/20/2012		12/31/2012	120.70	
								Account 52240 - Repairs and Maint- Office Equip Totals		Invoice Transactions 5	<u>\$790.01</u>
Account 60010 - Operating Supplies											
3578 - Warehouse Direct Office Products	1786057-0	Health - Paper/Pens/Labels/Supplies	Paid by EFT # 16632		12/20/2012	12/20/2012	12/20/2012		12/31/2012	27.99	
								Account 60010 - Operating Supplies Totals		Invoice Transactions 1	<u>\$27.99</u>
Account 60050 - Books and Subscriptions											
3066 - Morbidity & Mortality Weekly Report	12/20/2012	Health- Subscription	Paid by Check # 327357		12/20/2012	12/20/2012	12/20/2012		12/31/2012	79.00	
								Account 60050 - Books and Subscriptions Totals		Invoice Transactions 1	<u>\$79.00</u>
Account 63010 - Utilities- Electric											
1054 - ComEd	12-12-12	Health - Electric Service	Paid by Check # 327254		12/20/2012	12/20/2012	12/20/2012		12/31/2012	101.92	
								Account 63010 - Utilities- Electric Totals		Invoice Transactions 1	<u>\$101.92</u>
Account 63040 - Fuel- Vehicles											
1507 - PetroLiance LLC	9257832	Health - Fuel for KC Vehicles	Paid by EFT # 16424		11/30/2012	12/11/2012	12/11/2012		12/17/2012	11.94	
1507 - PetroLiance LLC	9261311	Health - Fuel for KC Vehicles	Paid by EFT # 16594		12/10/2012	12/20/2012	12/20/2012		12/31/2012	65.98	
								Account 63040 - Fuel- Vehicles Totals		Invoice Transactions 2	<u>\$77.92</u>
Account 64000 - Telephone											
1057 - AT&T	630264027112	Health - Monthly Service Charge	Paid by Check # 327195		12/10/2012	12/20/2012	12/20/2012		12/31/2012	360.48	
2579 - Premiere Global / Xpedite Systems LLC	1212750577	Health - FAX Blast Monthly Usage	Paid by Check # 327393		11/30/2012	12/20/2012	12/20/2012		12/31/2012	1,366.37	
								Account 64000 - Telephone Totals		Invoice Transactions 2	<u>\$1,726.85</u>
								Sub-Department 580 - Community Health Resources Totals		Invoice Transactions 18	<u>\$4,144.01</u>



Public Health Accounts Payable by GL Distribution

Payment Date Range 12/01/12 - 12/31/12

Vendor	Invoice No.	Invoice Description	Status	Held Reason	Invoice Date	Due Date	G/L Date	Received Date	Payment Date	Invoice Amount
Fund 350 - County Health										
Department 580 - Health										
Sub-Department 595 - Safe Water										
Account 52180 - Building Space Rental										
7525 - Burnidge Properties	Nov 15,2012	Health - Building Space Allocation	Paid by Check # 326800		12/11/2012	12/11/2012	12/11/2012		12/17/2012	643.72
7525 - Burnidge Properties	Oct 10, 2012	Health - Building Space Allocation	Paid by Check # 326800		12/11/2012	12/11/2012	12/11/2012		12/17/2012	70.15
							Account 52180 - Building Space Rental Totals		Invoice Transactions 2	<u>\$713.87</u>
							Sub-Department 595 - Safe Water Totals		Invoice Transactions 2	<u>\$713.87</u>
Sub-Department 596 - Summer Food Prgm Reimbursement										
Account 63040 - Fuel- Vehicles										
1507 - PetroLiance LLC	9257832	Health - Fuel for KC Vehicles	Paid by EFT # 16424		11/30/2012	12/11/2012	12/11/2012		12/17/2012	8.83
1507 - PetroLiance LLC	9261311	Health - Fuel for KC Vehicles	Paid by EFT # 16594		12/10/2012	12/20/2012	12/20/2012		12/31/2012	48.76
							Account 63040 - Fuel- Vehicles Totals		Invoice Transactions 2	<u>\$57.59</u>
							Sub-Department 596 - Summer Food Prgm Reimbursement Totals		Invoice Transactions 2	<u>\$57.59</u>
Sub-Department 607 - Direct Observed Therapy										
Account 50150 - Contractual/Consulting Services										
5445 - Pacific Interpreters	123057	Health - Translation Services	Paid by Check # 327045		12/30/2012	12/11/2012	12/11/2012		12/17/2012	36.00
							Account 50150 - Contractual/Consulting Services Totals		Invoice Transactions 1	<u>\$36.00</u>
							Sub-Department 607 - Direct Observed Therapy Totals		Invoice Transactions 1	<u>\$36.00</u>
Sub-Department 609 - Environment										
Account 52180 - Building Space Rental										
7525 - Burnidge Properties	Nov 15,2012	Health - Building Space Allocation	Paid by Check # 326800		12/11/2012	12/11/2012	12/11/2012		12/17/2012	887.89
7525 - Burnidge Properties	Oct 10, 2012	Health - Building Space Allocation	Paid by Check # 326800		12/11/2012	12/11/2012	12/11/2012		12/17/2012	96.76
							Account 52180 - Building Space Rental Totals		Invoice Transactions 2	<u>\$984.65</u>
							Sub-Department 609 - Environment Totals		Invoice Transactions 2	<u>\$984.65</u>
Sub-Department 624 - Tanning Facility Permits										
Account 52180 - Building Space Rental										
7525 - Burnidge Properties	Nov 15,2012	Health - Building Space Allocation	Paid by Check # 326800		12/11/2012	12/11/2012	12/11/2012		12/17/2012	221.97
7525 - Burnidge Properties	Oct 10, 2012	Health - Building Space Allocation	Paid by Check # 326800		12/11/2012	12/11/2012	12/11/2012		12/17/2012	24.19
							Account 52180 - Building Space Rental Totals		Invoice Transactions 2	<u>\$246.16</u>
							Sub-Department 624 - Tanning Facility Permits Totals		Invoice Transactions 2	<u>\$246.16</u>



Public Health Accounts Payable by GL Distribution

Payment Date Range 12/01/12 - 12/31/12

Vendor	Invoice No.	Invoice Description	Status	Held Reason	Invoice Date	Due Date	G/L Date	Received Date	Payment Date	Invoice Amount
Fund 350 - County Health										
Department 580 - Health										
Sub-Department 630 - Division of Health Promotion										
Account 53120 - Employee Mileage Expense										
7433 - Jacqueline Forbes	12122012a	Dec mileage	Paid by Check # 327290		12/19/2012	12/19/2012	12/19/2012		12/31/2012	23.77
								Account 53120 - Employee Mileage Expense Totals	Invoice Transactions 1	<u>23.77</u>
Account 60010 - Operating Supplies										
8673 - Linden Resource Inc (dba AHRQ / SOC Enterprises)	405713	Health- Reference Guides	Paid by Check # 327342		12/12/2012	12/20/2012	12/20/2012		12/31/2012	525.00
								Account 60010 - Operating Supplies Totals	Invoice Transactions 1	<u>525.00</u>
Account 63010 - Utilities- Electric										
1054 - ComEd	12/10/12	Health - Electric Service	Paid by Check # 327254		12/10/2012	12/20/2012	12/20/2012		12/31/2012	316.37
								Account 63010 - Utilities- Electric Totals	Invoice Transactions 1	<u>316.37</u>
								Sub-Department 630 - Division of Health Promotion Totals	Invoice Transactions 3	<u>\$865.14</u>
Sub-Department 631 - Division of Disease Prevention										
Account 50150 - Contractual/Consulting Services										
1454 - Dreyer Medical Inc.	Dec.2012	Health - Dr. Huston -TB	Paid by EFT # 16357		12/01/2012	12/11/2012	12/11/2012		12/17/2012	1,500.00
1454 - Dreyer Medical Inc.	12-2012	Health - Dr. Verma -TB	Paid by EFT # 16357		12/01/2012	12/11/2012	12/11/2012		12/17/2012	1,500.00
8437 - Phoenix Staffing & Management Systems	19967-0	Health - Office Assistant	Paid by EFT # 16425		12/02/2012	12/11/2012	12/11/2012		12/17/2012	600.60
8538 - Physicians Billing Service LLC	pbs21689	Health - Transcription Service	Paid by EFT # 16426		12/06/2012	12/11/2012	12/11/2012		12/17/2012	59.19
3065 - PADS Inc DBA Hesed House Inc	816	Health - Housing/Patient Support	Paid by EFT # 16590		11/30/2012	12/20/2012	12/20/2012		12/31/2012	5,000.00
8437 - Phoenix Staffing & Management Systems	19988	Health - Office Assistant	Paid by EFT # 16595		12/09/2012	12/20/2012	12/20/2012		12/31/2012	634.20
								Account 50150 - Contractual/Consulting Services Totals	Invoice Transactions 6	<u>\$9,293.99</u>
Account 60010 - Operating Supplies										
3578 - Warehouse Direct Office Products	1786833-0	Health - Paper/Pens/Labels/Supplies	Paid by EFT # 16632		12/11/2012	12/20/2012	12/20/2012		12/31/2012	237.00
								Account 60010 - Operating Supplies Totals	Invoice Transactions 1	<u>237.00</u>
Account 60250 - Medical Supplies and Drugs										
1421 - VERSAPHARM Inc	103118	Health - Medicine	Paid by Check # 327136		11/29/2012	12/11/2012	12/11/2012		12/17/2012	414.00
2386 - The Compounder Pharmacy	18248	Health- Drugs& Vaccines	Paid by Check # 327427		11/09/2012	12/20/2012	12/20/2012		12/31/2012	43.00
								Account 60250 - Medical Supplies and Drugs Totals	Invoice Transactions 2	<u>\$457.00</u>



Public Health Accounts Payable by GL Distribution

Payment Date Range 12/01/12 - 12/31/12

Vendor	Invoice No.	Invoice Description	Status	Held Reason	Invoice Date	Due Date	G/L Date	Received Date	Payment Date	Invoice Amount
Fund 350 - County Health										
Department 580 - Health										
Sub-Department 631 - Division of Disease Prevention										
Account 63040 - Fuel- Vehicles										
1507 - PetroLiance LLC	9257832	Health - Fuel for KC Vehicles	Paid by EFT # 16424		11/30/2012	12/11/2012	12/11/2012		12/17/2012	5.19
1507 - PetroLiance LLC	9261311	Health - Fuel for KC Vehicles	Paid by EFT # 16594		12/10/2012	12/20/2012	12/20/2012		12/31/2012	28.68
							Account 63040 - Fuel- Vehicles Totals	Invoice Transactions	2	<u>\$33.87</u>
							Sub-Department 631 - Division of Disease Prevention Totals	Invoice Transactions	11	<u>\$10,021.86</u>
							Department 580 - Health Totals	Invoice Transactions	41	<u>\$17,069.28</u>
							Fund 350 - County Health Totals	Invoice Transactions	41	<u>\$17,069.28</u>
Fund 351 - Kane Kares										
Department 580 - Health										
Sub-Department 640 - Kane Kares										
Account 50150 - Contractual/Consulting Services										
8437 - Phoenix Staffing & Management Systems	19967	Health - Office Assistant - MIECHV	Paid by EFT # 16425		12/02/2012	12/11/2012	12/11/2012		12/17/2012	592.20
8437 - Phoenix Staffing & Management Systems	19988	Health - Office Assistant	Paid by EFT # 16595		12/09/2012	12/20/2012	12/20/2012		12/31/2012	588.00
6010 - Translation Today Network Inc	3085	Health - Sign Language Interpretation	Paid by Check # 327432		12/05/2012	12/20/2012	12/20/2012		12/31/2012	285.54
							Account 50150 - Contractual/Consulting Services Totals	Invoice Transactions	3	<u>\$1,465.74</u>
Account 52180 - Building Space Rental										
7525 - Burnidge Properties	Nov 15,2012	Health - Building Space Allocation	Paid by Check # 326800		12/11/2012	12/11/2012	12/11/2012		12/17/2012	466.15
7525 - Burnidge Properties	Oct 10, 2012	Health - Building Space Allocation	Paid by Check # 326800		12/11/2012	12/11/2012	12/11/2012		12/17/2012	50.79
							Account 52180 - Building Space Rental Totals	Invoice Transactions	2	<u>\$516.94</u>
Account 63010 - Utilities- Electric										
1054 - ComEd	Dec 12,2012	Health - Electric Service	Paid by Check # 327254		12/12/2012	12/20/2012	12/20/2012		12/31/2012	103.34
1054 - ComEd	dec12,12	Health - Electric Service	Paid by Check # 327254		12/12/2012	12/20/2012	12/20/2012		12/31/2012	181.79
							Account 63010 - Utilities- Electric Totals	Invoice Transactions	2	<u>\$285.13</u>
							Sub-Department 640 - Kane Kares Totals	Invoice Transactions	7	<u>\$2,267.81</u>
							Department 580 - Health Totals	Invoice Transactions	7	<u>\$2,267.81</u>
							Fund 351 - Kane Kares Totals	Invoice Transactions	7	<u>\$2,267.81</u>
							Grand Totals	Invoice Transactions	63	<u>\$25,169.26</u>

Public Health Committee Revenue Report - Summary
December 31, 2012 (8.3% YTD)

	Current Month Transactions	Total Amended Budget	YTD Actual Transactions	Total % Received
500 Animal Control	3,044	1,086,295	3,044	0.28%
290 Animal Control	3,044	1,086,295	3,044	0.28%
510 Emergency Management Services	14,226	95,000	14,226	14.97%
001 General Fund	14,226	95,000	14,226	14.97%
580 Health	328,564	5,538,872	328,564	5.93%
350 County Health	328,541	4,695,390	328,541	7.00%
351 Kane Kares	23	843,482	23	0.00%
Grand Total	345,834	6,720,167	345,834	5.15%

**Public Health Committee Expenditure Report - Summary
Through December 31, 2012 (8.3% YTD, 7.7% Payroll)**

	Current Month Transactions	Total Amended Budget	YTD Actual Transactions	YTD Encumbrances	Total % Used
500 Animal Control	50,725	1,086,295	50,725	802	4.74%
290 Animal Control	50,725	1,086,295	50,725	802	4.74%
510 Emergency Management Services	12,829	183,509	12,829	0	6.99%
001 General Fund	12,829	183,509	12,829	0	6.99%
580 Health	362,751	5,538,872	362,751	77,636	7.95%
350 County Health	321,599	4,695,390	321,599	67,460	8.29%
351 Kane Kares	41,151	843,482	41,151	10,176	6.09%
Grand Total	426,305	6,808,676	426,305	78,438	7.41%

**Public Health Committee Expenditure Report - Detail
Through December 31, 2012 (8.3% YTD, 7.7% Payroll)**

	Current Month Transactions	Total Amended Budget	YTD Actual Transactions	YTD Encumbrances	Total % Used
500 Animal Control	50,725	1,086,295	50,725	802	4.74%
Personnel Services- Salaries & Wages	26,933	497,931	26,933	0	5.41%
290 Animal Control	26,933	497,931	26,933	0	5.41%
Personnel Services- Employee Benefits	9,630	181,223	9,630	0	5.31%
290 Animal Control	9,630	181,223	9,630	0	5.31%
Contractual Services	5,086	91,720	5,086	0	5.55%
290 Animal Control	5,086	91,720	5,086	0	5.55%
Commodities	659	68,690	659	802	2.13%
290 Animal Control	659	68,690	659	802	2.13%
Transfers Out	0	246,731	0	0	0.00%
290 Animal Control	0	246,731	0	0	0.00%
Capital	8,417	0	8,417	0	
290 Animal Control	8,417	0	8,417	0	
510 Emergency Management Services	12,829	183,509	12,829	0	6.99%
Personnel Services- Salaries & Wages	11,210	147,377	11,210	0	7.61%
001 General Fund	11,210	147,377	11,210	0	7.61%
Personnel Services- Employee Benefits	1,599	19,353	1,599	0	8.26%
001 General Fund	1,599	19,353	1,599	0	8.26%
Contractual Services	0	6,986	0	0	0.00%
001 General Fund	0	6,986	0	0	0.00%
Commodities	20	9,793	20	0	0.21%
001 General Fund	20	9,793	20	0	0.21%
580 Health	362,751	5,538,872	362,751	77,636	7.95%
Personnel Services- Salaries & Wages	240,659	3,382,194	240,659	0	7.12%
350 County Health	211,591	2,822,494	211,591	0	7.50%
351 Kane Kares	29,068	559,700	29,068	0	5.19%
Personnel Services- Employee Benefits	94,338	1,336,361	94,338	0	7.06%
350 County Health	84,523	1,156,107	84,523	0	7.31%
351 Kane Kares	9,816	180,254	9,816	0	5.45%
Contractual Services	23,828	647,572	23,828	66,666	13.97%
350 County Health	21,846	559,443	21,846	57,149	14.12%
351 Kane Kares	1,983	88,129	1,983	9,518	13.05%
Commodities	3,926	171,845	3,926	10,969	8.67%
350 County Health	3,641	157,346	3,641	10,311	8.87%
351 Kane Kares	285	14,499	285	658	6.50%
Capital	0	900	0	0	0.00%
351 Kane Kares	0	900	0	0	0.00%
Grand Total	426,305	6,808,676	426,305	78,438	7.41%



Health Department By Account Classification

Through 12/31/12
Prior Fiscal Year Activity Included
Summary Listing

Account Classification	Adopted Budget	Budget Amendments	Amended Budget	Current Month Transactions	YTD Encumbrances	YTD Transactions	Budget - YTD Transactions	% used/ Rec'd	Prior Year Total
Fund 350 - County Health									
REVENUE									
Property Taxes	1,972,455.00	.00	1,972,455.00	.00	.00	.00	1,972,455.00	0	1,965,374.12
Other Taxes	.00	.00	.00	.00	.00	.00	.00	+++	.00
Licenses and Permits	1,062,061.00	.00	1,062,061.00	324,309.75	.00	324,309.75	737,751.25	31	1,080,801.37
Grants	1,401,769.00	.00	1,401,769.00	.00	.00	.00	1,401,769.00	0	1,380,233.97
Charges for Services	61,025.00	.00	61,025.00	3,475.00	.00	3,475.00	57,550.00	6	135,362.39
Reimbursements	4,960.00	.00	4,960.00	542.00	.00	542.00	4,418.00	11	12,229.25
Interest Revenue	10,000.00	.00	10,000.00	509.58	.00	509.58	9,490.42	5	10,594.64
Other	.00	.00	.00	.00	.00	.00	.00	+++	5,646.51
Transfers In	.00	.00	.00	.00	.00	.00	.00	+++	.00
Cash on Hand	183,120.00	.00	183,120.00	.00	.00	.00	183,120.00	0	.00
REVENUE TOTALS	\$4,695,390.00	\$0.00	\$4,695,390.00	\$328,836.33	\$0.00	\$328,836.33	\$4,366,553.67	7%	\$4,590,242.25
EXPENSE									
Personnel Services- Salaries & Wages	2,822,494.00	.00	2,822,494.00	211,590.76	.00	211,590.76	2,610,903.24	7	2,781,903.07
Personnel Services- Employee Benefits	1,156,107.00	.00	1,156,107.00	84,522.52	.00	84,522.52	1,071,584.48	7	1,073,550.87
Contractual Services	559,443.00	.00	559,443.00	21,845.66	57,148.52	21,845.66	480,448.82	14	619,696.95
Commodities	157,346.00	.00	157,346.00	3,640.51	10,311.27	3,640.51	143,394.22	9	115,147.17
Capital	.00	.00	.00	.00	.00	.00	.00	+++	.00
Transfers Out	.00	.00	.00	.00	.00	.00	.00	+++	15,000.00
EXPENSE TOTALS	\$4,695,390.00	\$0.00	\$4,695,390.00	\$321,599.45	\$67,459.79	\$321,599.45	\$4,306,330.76	8%	\$4,605,298.06
Fund 350 - County Health Totals									
REVENUE TOTALS	4,695,390.00	.00	4,695,390.00	328,836.33	.00	328,836.33	4,366,553.67	7	4,590,242.25
EXPENSE TOTALS	4,695,390.00	.00	4,695,390.00	321,599.45	67,459.79	321,599.45	4,306,330.76	8	4,605,298.06
Fund 350 - County Health Totals	\$0.00	\$0.00	\$0.00	\$7,236.88	(\$67,459.79)	\$7,236.88	\$60,222.91		(\$15,055.81)
Fund 351 - Kane Kares									
REVENUE									
Grants	418,005.00	80,000.00	498,005.00	.00	.00	.00	498,005.00	0	382,200.74
Reimbursements	.00	.00	.00	.00	.00	.00	.00	+++	294.60
Interest Revenue	1,000.00	.00	1,000.00	46.51	.00	46.51	953.49	5	1,415.30
Other	.00	.00	.00	.00	.00	.00	.00	+++	40.00
Transfers In	304,000.00	.00	304,000.00	.00	.00	.00	304,000.00	0	320,424.00
Cash on Hand	40,477.00	.00	40,477.00	.00	.00	.00	40,477.00	0	.00
REVENUE TOTALS	\$763,482.00	\$80,000.00	\$843,482.00	\$46.51	\$0.00	\$46.51	\$843,435.49	0%	\$704,374.64
EXPENSE									
Personnel Services- Salaries & Wages	515,686.00	44,014.00	559,700.00	29,068.12	.00	29,068.12	530,631.88	5	435,377.00
Personnel Services- Employee Benefits	163,563.00	16,691.00	180,254.00	9,815.56	.00	9,815.56	170,438.44	5	134,917.44
Contractual Services	73,454.00	14,675.00	88,129.00	1,982.68	9,517.79	1,982.68	76,628.53	13	77,001.69
Commodities	10,779.00	3,720.00	14,499.00	285.13	658.00	285.13	13,555.87	7	2,251.37
Capital	.00	900.00	900.00	.00	.00	.00	900.00	0	.00



Health Department By Account Classification

Through 12/31/12
 Prior Fiscal Year Activity Included
 Summary Listing

Account Classification	Adopted Budget	Budget Amendments	Amended Budget	Current Month Transactions	YTD Encumbrances	YTD Transactions	Budget - YTD Transactions	% used/ Rec'd	Prior Year Total
Fund 351 - Kane Kares									
EXPENSE TOTALS	\$763,482.00	\$80,000.00	\$843,482.00	\$41,151.49	\$10,175.79	\$41,151.49	\$792,154.72	6%	\$649,547.50
Fund 351 - Kane Kares Totals									
REVENUE TOTALS	763,482.00	80,000.00	843,482.00	46.51	.00	46.51	843,435.49	0	704,374.64
EXPENSE TOTALS	763,482.00	80,000.00	843,482.00	41,151.49	10,175.79	41,151.49	792,154.72	6	649,547.50
Fund 351 - Kane Kares Totals	\$0.00	\$0.00	\$0.00	(\$41,104.98)	(\$10,175.79)	(\$41,104.98)	\$51,280.77		\$54,827.14
Grand Totals									
REVENUE TOTALS	5,458,872.00	80,000.00	5,538,872.00	328,882.84	.00	328,882.84	5,209,989.16	6	5,294,616.89
EXPENSE TOTALS	5,458,872.00	80,000.00	5,538,872.00	362,750.94	77,635.58	362,750.94	5,098,485.48	8	5,254,845.56
Grand Totals	\$0.00	\$0.00	\$0.00	(\$33,868.10)	(\$77,635.58)	(\$33,868.10)	\$111,503.68		\$39,771.33

**Kane County Purchasing Card Information
Public Health Committee
Statement Due Date 1/29/2013**

500 ANIMAL CONTROL DEPARTMENT

<i>Transaction Date</i>	<i>Merchant Name</i>	<i>Additional Information</i>	<i>Transaction Amount</i>
12/17/2012	LOWES #01738	SAINT CHARLES	11.94
12/19/2012	BARNES & NOBLE #2106	GENEVA	74.85
12/20/2012	ANTECH DIAGNOSTICS	08005421151	131.50
<i>Department Total</i>			218.29

510 EMERGENCY MANAGEMENT

<i>Transaction Date</i>	<i>Merchant Name</i>	<i>Additional Information</i>	<i>Transaction Amount</i>
12/05/2012	NICK'S PIZZA PUB L	ELGIN	850.31
12/05/2012	SAMSClub #4942	ELGIN	37.59
12/13/2012	FILTERMAXX.COM	8452656000	62.27
<i>Department Total</i>			950.17

580 HEALTH DEPARTMENT

<i>Transaction Date</i>	<i>Merchant Name</i>	<i>Additional Information</i>	<i>Transaction Amount</i>
12/03/2012	HOBBY-LOBBY #0236	AURORA	79.96
12/04/2012	FEDEXOFFICE 00011767	AURORA	120.00
12/05/2012	LAPEL PINS PLUS NETWORK	08002520904	400.00
12/06/2012	IDPH-PRIVATE SEWAGE CO	SPRINGFIELD	51.50
12/08/2012	FIRST BOOK	866-7323669	971.20
12/11/2012	4IMPRINT	877-4467746	521.01
12/11/2012	SURVEYMONKEY.COM	971-2445555	200.00
12/17/2012	GLAXOSMITHKLINE PHARMA	02157513597	792.64
12/20/2012	EXPLORATRACK	8004148655	52.75
12/27/2012	37SIGNALS-CHARGE.COM	03122390165	24.00
<i>Department Total</i>			3,213.06
<i>Committee Total</i>			4,381.52



Animal Control Budget Performance Report -

Fiscal Year to Date 12/31/12
Include Rollup Account and Rollup to Account

Account	Account Description	Adopted Budget	Budget Amendments	Amended Budget	Current Month Transactions	YTD Encumbrances	YTD Transactions	Budget - YTD Transactions	% used/ Rec'd	Prior Year Total
Fund 290 - Animal Control										
Department 500 - Animal Control										
REVENUE										
<i>Charges for Services</i>										
34580	Registration and Tag Fees	804,500.00	.00	804,500.00	.00	.00	.00	804,500.00	0	628,281.25
34590	Animal Transportation Fees	2,550.00	.00	2,550.00	.00	.00	.00	2,550.00	0	1,932.50
34600	Animal Pickup Fees	15,300.00	.00	15,300.00	300.00	.00	300.00	15,000.00	2	14,782.50
34610	Impound Fees	6,695.00	.00	6,695.00	122.50	.00	122.50	6,572.50	2	5,657.50
34620	Adoption Fees	18,540.00	.00	18,540.00	750.00	.00	750.00	17,790.00	4	19,446.00
34630	Microchip Fees	2,575.00	.00	2,575.00	30.00	.00	30.00	2,545.00	1	2,312.50
<i>Charges for Services Totals</i>		\$850,160.00	\$0.00	\$850,160.00	\$1,202.50	\$0.00	\$1,202.50	\$848,957.50	0%	\$672,412.25
<i>Fines</i>										
36100	Court Fines	10,000.00	.00	10,000.00	25.00	.00	25.00	9,975.00	0	4,312.77
<i>Fines Totals</i>		\$10,000.00	\$0.00	\$10,000.00	\$25.00	\$0.00	\$25.00	\$9,975.00	0%	\$4,312.77
<i>Reimbursements</i>										
37230	Service Reimbursements	35,000.00	.00	35,000.00	1,600.00	.00	1,600.00	33,400.00	5	20,650.00
37900	Miscellaneous Reimbursement	100.00	.00	100.00	.00	.00	.00	100.00	0	345.00
<i>Reimbursements Totals</i>		\$35,100.00	\$0.00	\$35,100.00	\$1,600.00	\$0.00	\$1,600.00	\$33,500.00	5%	\$20,995.00
<i>Interest Revenue</i>										
38000	Investment Income	1,000.00	.00	1,000.00	53.99	.00	53.99	946.01	5	1,044.67
<i>Interest Revenue Totals</i>		\$1,000.00	\$0.00	\$1,000.00	\$53.99	\$0.00	\$53.99	\$946.01	5%	\$1,044.67
<i>Other</i>										
38520	General Donations	1,000.00	.00	1,000.00	115.00	.00	115.00	885.00	12	1,033.90
38900	Miscellaneous Other	1,200.00	.00	1,200.00	80.00	.00	80.00	1,120.00	7	1,543.94
<i>Other Totals</i>		\$2,200.00	\$0.00	\$2,200.00	\$195.00	\$0.00	\$195.00	\$2,005.00	9%	\$2,577.84
<i>Transfers In</i>										
39000	Transfer From Other Funds	6,104.00	.00	6,104.00	.00	.00	.00	6,104.00	0	.00
<i>Transfers In Totals</i>		\$6,104.00	\$0.00	\$6,104.00	\$0.00	\$0.00	\$0.00	\$6,104.00	0%	\$0.00
<i>Cash on Hand</i>										
39900	Cash On Hand	181,731.00	.00	181,731.00	.00	.00	.00	181,731.00	0	.00
<i>Cash on Hand Totals</i>		\$181,731.00	\$0.00	\$181,731.00	\$0.00	\$0.00	\$0.00	\$181,731.00	0%	\$0.00
REVENUE TOTALS		\$1,086,295.00	\$0.00	\$1,086,295.00	\$3,076.49	\$0.00	\$3,076.49	\$1,083,218.51	0%	\$701,342.53
EXPENSE										
<i>Personnel Services- Salaries & Wages</i>										
40000	Salaries and Wages	471,399.00	.00	471,399.00	25,287.64	.00	25,287.64	446,111.36	5	367,878.66
40200	Overtime Salaries	26,532.00	.00	26,532.00	1,645.85	.00	1,645.85	24,886.15	6	23,468.82
<i>Personnel Services- Salaries & Wages Totals</i>		\$497,931.00	\$0.00	\$497,931.00	\$26,933.49	\$0.00	\$26,933.49	\$470,997.51	5%	\$391,347.48
<i>Personnel Services- Employee Benefits</i>										
45000	Healthcare Contribution	85,488.00	.00	85,488.00	4,574.62	.00	4,574.62	80,913.38	5	58,889.41
45010	Dental Contribution	1,992.00	.00	1,992.00	110.64	.00	110.64	1,881.36	6	1,432.54
45100	FICA/SS Contribution	37,625.00	.00	37,625.00	2,016.49	.00	2,016.49	35,608.51	5	29,336.02



Animal Control Budget Performance Report -

Fiscal Year to Date 12/31/12
Include Rollup Account and Rollup to Account

Account	Account Description	Adopted Budget	Budget Amendments	Amended Budget	Current Month Transactions	YTD Encumbrances	YTD Transactions	Budget - YTD Transactions	% used/ Rec'd	Prior Year Total
Fund 290 - Animal Control										
Department 500 - Animal Control										
EXPENSE										
<i>Personnel Services- Employee Benefits</i>										
45200	IMRF Contribution	56,118.00	.00	56,118.00	2,927.91	.00	2,927.91	53,190.09	5	41,190.21
<i>Personnel Services- Employee Benefits Totals</i>		\$181,223.00	\$0.00	\$181,223.00	\$9,629.66	\$0.00	\$9,629.66	\$171,593.34	5%	\$130,848.18
<i>Contractual Services</i>										
50150	Contractual/Consulting Services	23,500.00	.00	23,500.00	3,552.32	.00	3,552.32	19,947.68	15	62,358.52
50180	Veterinarian Services	13,200.00	.00	13,200.00	.00	.00	.00	13,200.00	0	13,279.80
50380	Cremation Services	1,000.00	.00	1,000.00	.00	.00	.00	1,000.00	0	500.00
52000	Disposal and Water Softener Svcs	1,800.00	.00	1,800.00	112.66	.00	112.66	1,687.34	6	1,596.45
52010	Janitorial Services	3,600.00	.00	3,600.00	300.00	.00	300.00	3,300.00	8	1,283.33
52020	Repairs and Maintenance- Roads	3,000.00	.00	3,000.00	.00	.00	.00	3,000.00	0	2,046.00
52110	Repairs and Maint- Buildings	5,000.00	.00	5,000.00	489.00	.00	489.00	4,511.00	10	7,737.71
52120	Repairs and Maint- Grounds	1,500.00	.00	1,500.00	.00	.00	.00	1,500.00	0	1,459.38
52130	Repairs and Maint- Computers	6,000.00	.00	6,000.00	.00	.00	.00	6,000.00	0	9,204.50
52140	Repairs and Maint- Copiers	300.00	.00	300.00	.00	.00	.00	300.00	0	456.98
52150	Repairs and Maint- Comm Equip	300.00	.00	300.00	.00	.00	.00	300.00	0	.00
52160	Repairs and Maint- Equipment	2,500.00	.00	2,500.00	632.27	.00	632.27	1,867.73	25	4,537.85
52230	Repairs and Maint- Vehicles	2,500.00	.00	2,500.00	.00	.00	.00	2,500.00	0	3,421.94
53000	Liability Insurance	11,804.00	.00	11,804.00	.00	.00	.00	11,804.00	0	12,690.00
53010	Workers Compensation	9,838.00	.00	9,838.00	.00	.00	.00	9,838.00	0	8,171.00
53020	Unemployment Claims	1,378.00	.00	1,378.00	.00	.00	.00	1,378.00	0	1,202.00
53040	General Advertising	200.00	.00	200.00	.00	.00	.00	200.00	0	85.00
53060	General Printing	1,000.00	.00	1,000.00	.00	.00	.00	1,000.00	0	2,801.27
53100	Conferences and Meetings	500.00	.00	500.00	.00	.00	.00	500.00	0	579.63
53110	Employee Training	500.00	.00	500.00	.00	.00	.00	500.00	0	250.00
53120	Employee Mileage Expense	800.00	.00	800.00	.00	.00	.00	800.00	0	.00
53130	General Association Dues	500.00	.00	500.00	.00	.00	.00	500.00	0	1,040.00
53170	Employee Medical Expense	1,000.00	.00	1,000.00	.00	.00	.00	1,000.00	0	.00
<i>Contractual Services Totals</i>		\$91,720.00	\$0.00	\$91,720.00	\$5,086.25	\$0.00	\$5,086.25	\$86,633.75	6%	\$134,701.36
<i>Commodities</i>										
60000	Office Supplies	1,500.00	.00	1,500.00	.00	127.42	.00	1,372.58	8	1,756.47
60010	Operating Supplies	9,000.00	.00	9,000.00	.00	.00	.00	9,000.00	0	11,595.21
60100	Utilities- Water	2,000.00	.00	2,000.00	177.79	.00	177.79	1,822.21	9	2,427.07
60140	Animal Care Supplies	15,000.00	.00	15,000.00	.00	674.84	.00	14,325.16	4	13,229.48
60160	Cleaning Supplies	1,500.00	.00	1,500.00	.00	.00	.00	1,500.00	0	2,993.81
60210	Uniform Supplies	400.00	.00	400.00	.00	.00	.00	400.00	0	41.98
60250	Medical Supplies and Drugs	5,000.00	.00	5,000.00	.00	.00	.00	5,000.00	0	6,235.40
63000	Utilities- Natural Gas	11,000.00	.00	11,000.00	.00	.00	.00	11,000.00	0	7,638.11
63010	Utilities- Electric	8,500.00	.00	8,500.00	480.84	.00	480.84	8,019.16	6	9,916.36



Animal Control Budget Performance Report -

Fiscal Year to Date 12/31/12
Include Rollup Account and Rollup to Account

Account	Account Description	Adopted Budget	Budget Amendments	Amended Budget	Current Month Transactions	YTD Encumbrances	YTD Transactions	Budget - YTD Transactions	% used/ Rec'd	Prior Year Total
Fund 290 - Animal Control										
Department 500 - Animal Control										
EXPENSE										
<i>Commodities</i>										
63040	Fuel- Vehicles	8,500.00	.00	8,500.00	.00	.00	.00	8,500.00	0	8,542.71
64000	Telephone	6,290.00	.00	6,290.00	.00	.00	.00	6,290.00	0	4,708.54
<i>Commodities Totals</i>		\$68,690.00	\$0.00	\$68,690.00	\$658.63	\$802.26	\$658.63	\$67,229.11	2%	\$69,085.14
<i>Capital</i>										
70030	Computer Software License Cost	.00	.00	.00	8,416.89	.00	8,416.89	(8,416.89)	+++	.00
<i>Capital Totals</i>		\$0.00	\$0.00	\$0.00	\$8,416.89	\$0.00	\$8,416.89	(\$8,416.89)	+++	\$0.00
<i>Transfers Out</i>										
99000	Transfer To Other Funds	246,731.00	.00	246,731.00	.00	.00	.00	246,731.00	0	.00
<i>Transfers Out Totals</i>		\$246,731.00	\$0.00	\$246,731.00	\$0.00	\$0.00	\$0.00	\$246,731.00	0%	\$0.00
EXPENSE TOTALS		\$1,086,295.00	\$0.00	\$1,086,295.00	\$50,724.92	\$802.26	\$50,724.92	\$1,034,767.82	5%	\$725,982.16
Department 500 - Animal Control Totals		\$0.00	\$0.00	\$0.00	(\$47,648.43)	(\$802.26)	(\$47,648.43)	\$48,450.69	+++	(\$24,639.63)
Fund 290 - Animal Control Totals										
REVENUE TOTALS		1,086,295.00	.00	1,086,295.00	3,076.49	.00	3,076.49	1,083,218.51	0	701,342.53
EXPENSE TOTALS		1,086,295.00	.00	1,086,295.00	50,724.92	802.26	50,724.92	1,034,767.82	5	725,982.16
Fund 290 - Animal Control Totals		\$0.00	\$0.00	\$0.00	(\$47,648.43)	(\$802.26)	(\$47,648.43)	\$48,450.69		(\$24,639.63)
Grand Totals										
REVENUE TOTALS		1,086,295.00	.00	1,086,295.00	3,076.49	.00	3,076.49	1,083,218.51	0	701,342.53
EXPENSE TOTALS		1,086,295.00	.00	1,086,295.00	50,724.92	802.26	50,724.92	1,034,767.82	5	725,982.16
Grand Totals		\$0.00	\$0.00	\$0.00	(\$47,648.43)	(\$802.26)	(\$47,648.43)	\$48,450.69		(\$24,639.63)



PUBLIC HEALTH COMMITTEE REPORT

Ten essential services of Public Health

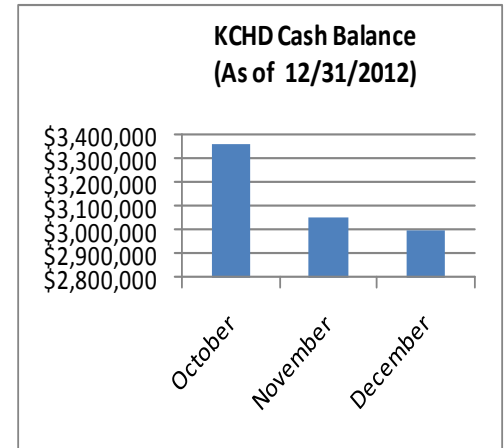
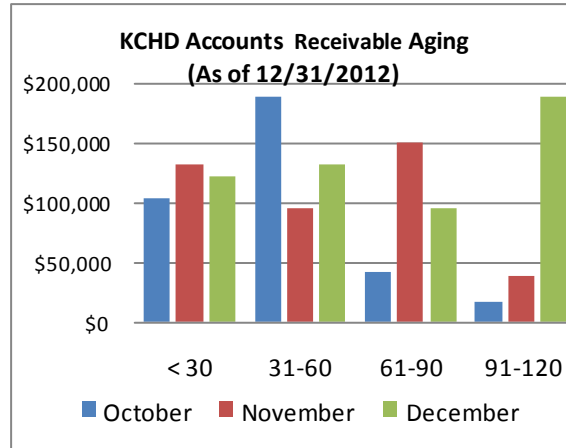
1. Monitor health status and understand health issues facing the community,
2. Protect people from health problems and health hazards.
3. Give people the information they need to make healthy choices.
4. Engage the community to identify and solve health problems.
5. Develop public health policies and plans.
6. Enforce public health laws and regulations.
7. Help people receive health services.
8. Maintain a competent public health workforce.
9. Evaluate and improve programs and interventions.
10. Contribute to and apply the evidence base of public health.

Link to Statistics

- Finance/Budget
- Kane Kares
- Environmental Health
- Communicable Disease
- Health Promotion

www.kanehealth.com/phc.htm

Finance and Budget report



Accounts Receivable and cash balance are presented in comparison with previous months.

Essential Service # 1

[Monitor health status and understand health issues facing community](#)

Flu Season Information

Getting a flu shot is one of the best ways to prevent the flu this season



Visit our Flu Page for information on the flu, how to stay healthy, and where to get a flu shot.

We are seeing the highest influenza-like illness activity for this time of the year in more than six years.

Total Picture

Every Friday, the Health Department posts its weekly surveillance report on the [KCHD website](#). This info, gleaned from the county's school nurses, hospital emergency rooms and laboratory testing facilities, is put together to provide a total picture of flu activity in Kane County

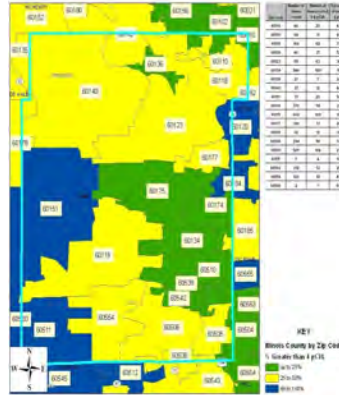
Essential Service #2

Protect people from health problems and health hazards.



National Radon Action Month

Radon, the second leading cause of lung cancer in the United States, is a colorless, odorless, radioactive gas that occurs naturally from the breakdown of uranium. Unfortunately, high levels of indoor radon gas can be found Illinois and Kane County. The [Health Department's website](#) contains a wealth of information about radon, including homeowners guides, local, regional and nation maps, contact information on requesting a speaker for your community group and much, much more.



The map at right indicates the percentage of Kane County homes with greater radon levels than the federal standard of 4pCi/L by ZIP Code. The green areas are 0 to 25%, yellow is 25% to 50%, and the blue is 50% to 100%. The Illinois Emergency Management Agency calculates the average level in Kane County is 5pCi/L (National level is 1.6pCi/l)

Get Tested!

Essential Service #5

Develop public health policies and plans.

Fit for Kids grants

The Making Kane County Fit for Kids Funders Consortium has announced the award of 14 grants to local agencies and community groups. The [grants](#), ranging in amount from \$500 to \$10,000, will be used to reverse the rising tide of childhood obesity in our county through a variety of programs designed to promote active lifestyles and increase access to fresh fruits and vegetables.





AGENDA ITEM EXECUTIVE SUMMARY

Agenda Item #

<input checked="" type="checkbox"/> Resolution	Name	Cadence Health Grant Authorization
<input type="checkbox"/> Ordinance		

Presenter/Sponsor:

Budget Information: Was this item budgeted? Yes No N/A Appropriation Amount:

If not budgeted, explain funding source

SUMMARY:

Attachments:

Detailed information available from : Staff Name: Phone:

Resolution/Ordinance Tracking:

Assigned Committee: Sent to: on:

If Other, specify:

Committee Remarks:

Next Committee: Sent to: on:

If Other, specify:

Committee Remarks:

Next Committee: Sent to: on:

Committee Remarks:

County Board Date:

STATE OF ILLINOIS

COUNTY OF KANE

RESOLUTION NO. 13-

CADENCE HEALTH GRANT AUTHORIZATION

WHEREAS, Cadence Health, an Illinois not for profit corporation has awarded the Kane County Health Department a FY13 contribution in the amount of \$50,000.00; and

WHEREAS, the objective of this contribution is to help support the Kane County TB Outbreak Implementation Plan and continue to focus on the identified tuberculosis outbreak; and

NOW, THEREFORE, BE IT RESOLVED by the Kane County Board that the Chairman thereof is hereby authorized to enter into said contribution agreement with Cadence Health.

Line Item	Line Item Description	Was personnel/item/service approved in original budget or a subsequent budget revision?	Are funds currently available for this personnel/item/service in the specific line item?	If funds are not currently available in the specified line item, where are the funds available?
350.580.000.33900	Miscellaneous	Yes	Yes	

Passed by the Kane County Board on February 13, 2013

John A. Cunningham
 Clerk, County Board
 Kane County, Illinois

Christopher J. Lauzen
 Chairman, County Board
 Kane County, Illinois

Vote:
 Yes _____
 No _____
 Voice _____
 Abstentions _____

**AGENDA ITEM EXECUTIVE SUMMARY**

Agenda Item #

-
- Resolution
-
-
- Ordinance

Name

RENEWING AGREEMENT BETWEEN KANE COUNTY HEALTH DEPARTMENT AND HESED HOUSE

Presenter/Sponsor:

Barbara Jeffers, Executive Director

Budget Information:

Was this item budgeted?

-
- Yes
-
- No
-
- N/A

Appropriation Amount: \$60,000.00

If not budgeted,
explain funding
source**SUMMARY:**

The Kane County Health Department, in collaboration with the Illinois Department of Public Health, is currently managing an outbreak of tuberculosis among homeless individuals in Kane County. An organized, concerted public health, medical and social support activities must be directed toward the homeless population in Kane County in order to identify TB infections and assure treatment in order to contain the outbreak.

The Kane County Health Department has contracted with Hessed House since 2009 for the purpose of providing housing, nutrition, transportation and other social support services to homeless individuals with active TB in order to assure completion of medical treatment.

This resolution authorizes the Kane County Board Chairman to enter into a renewed contract with Hessed House for these housing, nutrition, transportation and social support services for an amount not to exceed \$60,000.00 through November 30, 2013 utilizing budgeted funds for that purpose.

Attachments:

Detailed information available from:

Staff Name:

Barbara Jeffers, Executive Director

Phone:

630-444-3124

Resolution/Ordinance Tracking:

Assigned Committee:

Sent to:

on:

If Other, specify:

Committee Remarks:

Next Committee:

Sent to:

on:

If Other, specify:

Committee Remarks:

Next Committee:

Sent to:

on:

Committee Remarks:

County Board Date:

STATE OF ILLINOIS

COUNTY OF KANE

RESOLUTION NO. 13-

RENEWING AGREEMENT BETWEEN THE KANE COUNTY HEALTH DEPARTMENT AND HESED HOUSE

WHEREAS, the Kane County Health Department, in collaboration with the federal Centers for Disease Control and Prevention and the Illinois Department of Public Health, is currently managing an outbreak of tuberculosis among homeless individuals in Kane County; and

WHEREAS, organized, concerted public health, medical and social support activities must be directed toward the homeless population in Kane County in order to identify TB infections and assure treatment, in order to contain the outbreak; and

WHEREAS, the Kane County Health Department has contracted with Hesed House since 2009 for the purpose of providing housing, nutrition, transportation and other social support services to homeless individuals with active TB in order to assure completion of medical treatment; and.

NOW, THEREFORE, BE IT RESOLVED by the Kane County Board that the Chairman of the County Board be, and hereby is authorized to enter into a renewed agreement with Hesed House for housing, nutrition, transportation and other social support services for an amount not to exceed Sixty Thousand Dollard (\$60,000.00) through November 30, 2013 utilizing budgeted funds for that purpose .

Line Item	Line Item Description	Was personnel/item/service approved in original budget or a subsequent budget revision?	Are funds currently available for this personnel/item/service in the specific line item?	If funds are not currently available in the specified line item, where are the funds available?
350.580.631.50150	Contractual/Consulting	Yes	Yes	N/A

Passed by the Kane County Board on [Click here to enter text.](#)

John A. Cunningham
 Clerk, County Board
 Kane County, Illinois

Christopher J. Lauzen
 Chairman, County Board
 Kane County, Illinois

Vote:
 Yes _____
 No _____
 Voice _____
 Abstentions _____



AGENDA ITEM EXECUTIVE SUMMARY

Agenda Item #

- Resolution
 Ordinance

Name: AUTHORIZING EXCEPTION TO THE COUNTY FINANCIAL POLICIES REGARDING PERSONNEL HIRING AND REPLACEMENT - COMMUNITY HEALTH SPECIALIST II: ENVIRONMENTAL HEALTH PRACTITIONER

Presenter/Sponsor: Barbara Jeffers, Executive Director, Kane County Health Department

Budget Information: Was this item budgeted? Yes No N/A

Appropriation Amount: \$46,246.00

If not budgeted, explain funding source

SUMMARY: The Community Health Specialist II: Environmental Health Practitioner position is responsible for promoting individual and population public health by providing the essential services of public health within a variety of settings. Responsibilities include: inspecting properties, businesses or homes; identifying health and environmental hazards; providing community health education and health promotion activities; ensuring compliance with a broad range of current local health and environmental codes, regulations and policies; participating in multi-faceted health or environmental projects; and providing technical assistance and information to individuals, families and groups regarding public health and environmental issues.

The Executive Director of the Kane County Health Department is requesting an exception to the hiring moratorium as the continuance of a vacancy in this position will have a negative operational impact on the Department's ability to successfully manage operations and carry out its mission. This position is in the approved 2013 budget.

Attachments:

Detailed information available from :

Staff Name: Barbara Jeffers, Executive Director

Phone: 630-444-3021

Resolution/Ordinance Tracking:

Assigned Committee: Sent to: on:

If Other, specify:

Committee Remarks:

Next Committee: Sent to: on:

If Other, specify:

Committee Remarks:

Next Committee: Sent to: on:

Committee Remarks:

County Board Date:

STATE OF ILLINOIS

COUNTY OF KANE

RESOLUTION NO. 13-

**UTHORIZING EXCEPTION TO THE COUNTY FINANCIAL POLICIES REGARDING PERSONNEL
HIRING AND REPLACEMENT
Community Health Specialist II: Environmental Health Practitioner**

WHEREAS, on September 9, 2008 the Kane County Board had deemed it necessary to adopt by Resolution a moratorium on the hiring of new County personnel and the replacement of existing or future personnel vacancies; and

WHEREAS, Resolution 10-310 approved the Kane County Health Department re-organization structure in order to assure the delivery of the essential services of public health; and

WHEREAS, the Kane County Health Department requires hiring of a Community Health Specialist II: Environmental Health Practitioner in order to provide community health services and required public health inspections environmental investigations and services.

WHEREAS, the non-exempt Community Health Specialist II: Environmental Health Specialist, Grade 10 position with a salary range of \$33,734 through \$46,246 has been included in the FY13 budget and therefore passage of this resolution does not require a budget amendment for fiscal year 2013;

WHEREAS, the Executive Director of the Kane County Health Department is requesting the Kane County Board to allow an exception to the hiring moratorium, as the continuance of a shortage of staff will have a negative operational impact on the Department's ability to carry out its mission.

NOW, THEREFORE, BE IT RESOLVED by the Kane County Board that the Chairman thereof allow the Kane County Health Department to hire a replacement to fill the Community Health Specialist II: Environmental Health Practitioner position within the Department.

Line Item	Line Item Description	Was personnel/item/service approved in original budget or a subsequent budget revision?	Are funds currently available for this personnel/item/service in the specific line item?	If funds are not currently available in the specified line item, where are the funds available?
350.580.630.40000	Salaries & Wages	Yes	Yes	N/A

Passed by the Kane County Board on February 13, 2013

John A. Cunningham
Clerk, County Board
Kane County, Illinois

Christopher J. Lauzen
Chairman, County Board
Kane County, Illinois

Vote:
Yes _____
No _____
Voice _____
Abstentions _____



AGENDA ITEM EXECUTIVE SUMMARY

Agenda Item #

Resolution Name: AUTHORIZING EXCEPTION TO THE COUNTY FINANCIAL POLICIES REGARDING PERSONNEL HIRING AND REPLACEMENT - COMMUNITY HEALTH SPECIALIST II: PUBLIC HEALTH NURSE - KANE KARES
 Ordinance

Presenter/Sponsor: Barbara Jeffers, Executive Director, Kane County Health Department

Budget Information: Was this item budgeted? Yes No N/A Appropriation Amount: \$47,265.00

If not budgeted, explain funding source

SUMMARY: The Community Health Specialist II: Public Health Nurse position is responsible for providing public health nursing services to individuals, families, and population groups. Nursing actions are directed toward the goals of prevention, assessment, risk reduction, and health status improvement for individuals, families and communities. Nursing activities, include, but are not limited to, systematic analysis of health data, care plan development, health education and advocacy, coalition building, and collaborating with community partners to promotes the health of the population.

The Executive Director of the Kane County Health Department is requesting an exception to the hiring moratorium as the continuance of a vacancy in this position will have a negative impact on the Department's ability to successfully manage operations and carry out its mission. This position is in the approved 2013 budget.

Attachments:

Detailed information available from : Staff Name: Barbara Jeffers, Executive Director Phone: 630-444-3021

Resolution/Ordinance Tracking:

Assigned Committee: Sent to: on:

If Other, specify:

Committee Remarks:

Next Committee: Sent to: on:

If Other, specify:

Committee Remarks:

Next Committee: Sent to: on:

Committee Remarks:

County Board Date:

STATE OF ILLINOIS

COUNTY OF KANE

RESOLUTION NO. 13-

**AUTHORIZING EXCEPTION TO THE COUNTY FINANCIAL POLICIES REGARDING PERSONNEL
HIRING AND REPLACEMENT**

Community Health Specialist II: Public Health Nurse Kane Kares

WHEREAS, on September 9, 2008 the Kane County Board had deemed it necessary to adopt by Resolution a moratorium on the hiring of new County personnel and the replacement of existing or future personnel vacancies; and

WHEREAS, Resolution 10-310, approved the Kane County Health Department re-organization structure in order to assure the delivery of the essential services of public health; and

WHEREAS, the Kane County Health Department requires hiring of a Community Health Specialist II: Public Health Nurse in order to provide community health services utilizing the Nurse-Family Partnership evidence-based model for home visitation; and,

WHEREAS, the non-exempt Community Health Specialist II: Public Health Nurse, Grade 10 position with a salary range of \$38,220 through \$47,265.00, has been included in the FY13 budget and therefore passage of this resolution does not require a budget amendment for fiscal year 2013; and

WHEREAS, the Executive Director of the Kane County Health Department is requesting the Kane County Board to allow an exception to the hiring moratorium, as the continuance of a shortage of staff will have a negative operational impact on the Department’s ability to carry out its mission.

NOW, THEREFORE, BE IT RESOLVED by the Kane County Board that the Chairman thereof allow the Kane County Health Department to hire a replacement to fill the Community Health Specialist II: Public Health Nurse position within the Department.

Line Item	Line Item Description	Was personnel/item/service approved in original budget or a subsequent budget revision?	Are funds currently available for this personnel/item/service in the specific line item?	If funds are not currently available in the specified line item, where are the funds available?
351.580.640.40000	Salaries & Wages	Yes	Yes	

Passed by the Kane County Board on February 13, 2013.

John A. Cunningham
Clerk, County Board
Kane County, Illinois

Christopher J. Lauzen
Chairman, County Board
Kane County, Illinois

Vote:
Yes _____
No _____
Voice _____
Abstentions _____

COUNTY of KANE
OFFICE of EMERGENCY MANAGEMENT

Donald H. Bryant, IPEM
Director



719 South Batavia Ave.
Geneva, Illinois, 60134
Emergency: (630) 208-8911
Office: (630) 232-5985
FAX: (630) 232-7408

TO: Members of the Public Health Committee
FROM: Director Donald Bryant
SUBJECT: Monthly Report for November thru January
Date: January 22, 2013
CC:

During this reporting period the OEM conducted the quarterly meeting of the Municipal Emergency Management Coordination Council. During this meeting the IEMA regional coordinator discussed numerous programs currently underway throughout the State.

During this meeting the OEM also conducted a review of the Federal disaster declaration process including an explanation of the County and State monetary damage thresholds that must be met prior to receiving a Federal disaster declaration.

Also, a new computerized damage assessment form was distributed to meeting attendees to aid in the damage assessment documentation and reporting process.

In celebration of America Recycles Day the OEM assisted the Kane County Environmental Resources Department with this year's "Recycling Extravaganza". The daylong event took place on Saturday, November 10th as the OEM provided assistance with traffic control to help make the process run smoothly.

The Recycling Extravaganza was well attended by the public and was only interrupted for a short time by a fairly intense thunderstorm that produced hail and localized lightning.

Also in November the OEM conducted the quarterly meeting of the Local Emergency Planning Committee (LEPC). Discussions included the 2013 Hazardous Materials Response Plan update and the recruitment of new members for the committee.

During December OEM staff worked to update a number of emergency plans including our mass care emergency shelter plan. Staff also developed a new Handbook for the County's Disaster Management Team. The handbook describes the organization of the County's Emergency Operations Center (EOC) and delineates the roles and responsibilities of the various team members who are department heads representing 12 County agencies.

The OEM finished up 2012 by conducting two advanced Incident Command System (ICS) training classes. ICS training provides first responders with the skills necessary to manage and bring to a successful conclusion large scale emergencies or disasters.

With the New Year development of the Regional Catastrophic Plan, which includes 16 counties throughout northeastern Illinois, southeast Wisconsin, and northwestern Indiana, and the City of Chicago resumed in earnest. Working toward a full scale validation exercise, the planning team continues to work with FEMA Region 5 to complete the regional plan that can be utilized in other FEMA regions throughout the country.

In January, the OEM participated in two table top preparedness exercises. The first was at the Marklund Center at Mill Creek and the second was conducted by FEMA Region 5. Both exercises examined local response capabilities and long range planning challenges.

Finally, as part of the OEM's continuing community outreach program staff conducted a presentation to the Elgin Golden Kiwanis. Discussed were the County's CodeRED reverse 911 system along with the new Integrated Public Alert and Warning System (IPAWS).

Kane County OEM has recently received authorization from FEMA to allow local access to the IPAWS system.



David A. Christensen
Director

McHenry County Emergency Management Agency

www.mchenrycountyil.gov

ema@co.mchenry.il.us

Robert E. Ellsworth, Jr., CEM
Assistant Director

November 6, 2012

Donald Bryant, Director
Kane County OEM
719 S. Batavia Avenue
Building C
Geneva, IL 60134

Dear Mr. Don Bryant:

Please accept my sincere thank you for the tremendously supportive role your agency played in the recent Island Lake Police missing person search. Your team exemplified the true tenets of mutual aid. In this instance, your staff was phenomenal in its management support, as well as the profession actions of your skilled Search and Rescue Teams.

I truly appreciate the pre-event planning assistance and cooperative nature of your team and agency. In addition, the use of your mobile command vehicle and ATV contributed greatly to a safe and successful operation.

McHenry County Administration and EMA are indebted to you for your support, service and guidance. Job well done, by all.

Sincerely,

A handwritten signature in cursive script that reads "David A. Christensen".

David A. Christensen
Director, McHenry County Emergency Management Agency

cc: Robert Fleming, IEMA Region 3 Coordinator



CAMPTON HILLS POLICE DEPARTMENT

Daniel N. Hoffman, Chief of Police

Kane County OEM
719 S. Batavia Ave. Bldg C
Geneva, IL 60134
Attn: Don Bryant

December 11, 2012

Dear Don:

On Saturday, December 1, 2012, the Campton Hills Police Department was dispatched to handle a tragic vehicle crash on Rt. 38 near Pouley Road. The crash involved four vehicles, spread out over a wide area of Rt. 38. As a result of the crash, two people lost their lives as well as several injured parties being transported to local hospitals with serious injuries. Additionally, numerous victims had to be extricated from their vehicle prior to administering first aid. Route 38, a major thoroughfare, had to be completely shut down for an extended period of time to allow for emergency responders to attend to the scene.

I want to thank the Kane County OEM for your rapid and professional response to the crash scene. The Campton Hills Police Department, like most small departments, lacks the resources to properly handle a situation like this and is reliant on assisting agencies. With your assistance, and the assistance of neighboring police and fire departments, we were able to handle the situation in a prompt and professional manner.

Thank you for a job well done and again for your much needed assistance.

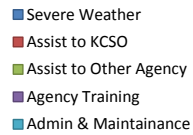
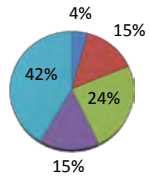
Sincerely,

Daniel Hoffman
Chief of Police

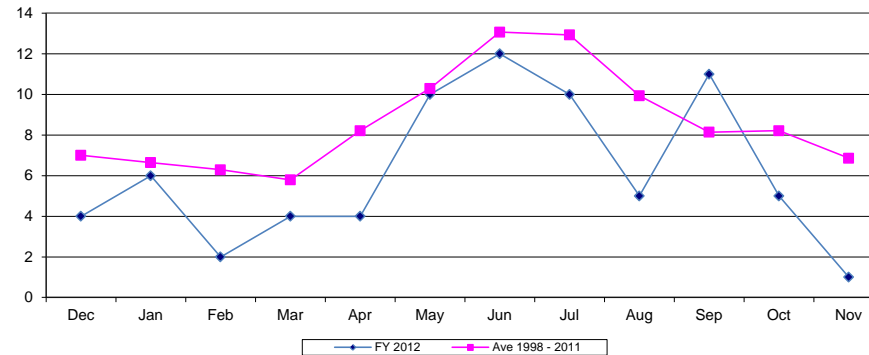
Emergency Management Volunteer Group Activity Report FY 2012

	Dec	Jan	Feb	Mar	Apr	May	Jun	Jul	Aug	Sep	Oct	Nov	Total Hours	Ave Hours
Severe Weather	0.00	0.00	0.00	0.00	0.00	66.75	22.75	110.25	30.00	22.50	14.00	0.00	266.25	22.19
Assist to KCSO	12.50	102.25	5.00	57.00	120.00	7.50	252.00	121.25	85.75	126.00	62.00	0.00	951.25	79.27
Assist to Other Agency	17.50	57.50	10.00	16.00	14.00	369.50	72.25	196.50	285.25	197.00	45.50	301.50	1,582.50	131.88
Agency Training	30.25	112.00	113.00	57.25	151.00	61.75	72.75	46.00	15.75	133.75	99.75	111.75	1,005.00	83.75
Admin & Maintenance	166.00	247.00	284.25	269.00	122.00	171.00	214.75	114.75	301.75	225.25	362.50	235.50	2,713.75	226.15
Monthly Manhours														
FY 2012	226.25	518.75	412.25	399.25	407.00	676.50	634.50	588.75	718.50	704.50	583.75	648.75	6,518.75	
Average 1998 - 2011	389.61	442.02	541.52	553.04	682.88	719.45	878.72	821.24	757.55	593.55	573.73	437.20	7,389.51	615.79
Number of Call Outs														
FY 2012	4	6	2	4	4	10	12	10	5	11	5	1	74	6
Average 1998 - 2011	7	6.64	6.29	5.79	8.21	10.29	13.07	12.93	9.93	8.14	8.21	6.86	103.36	9

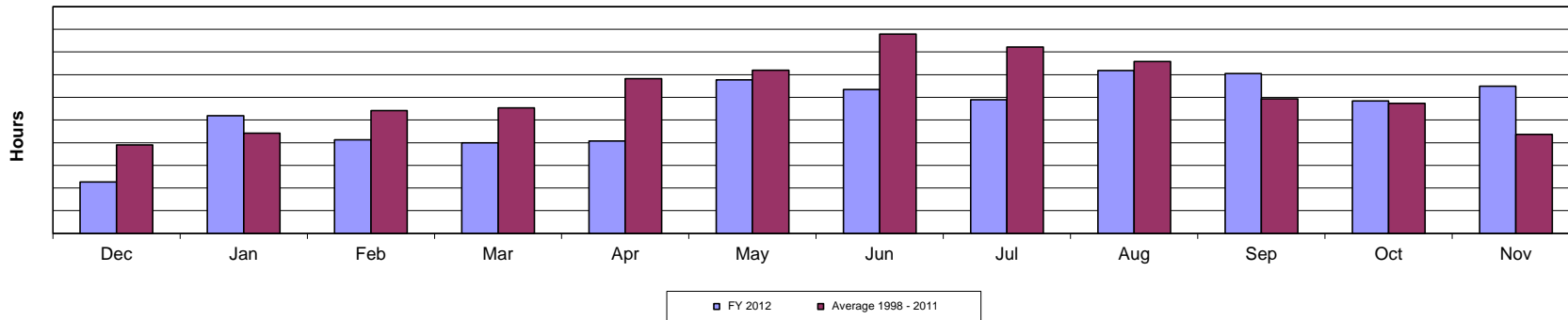
Year to Date Comparison by Activity



Agency Call-Outs



FY 2012 Volunteer Manhours vs Monthly Average



November 2012 OEM Callout Breakdown

Date	Called by	Paged Out	Where / What	We assisted with:	Area Assisted:
11/3/2012	McHenry Co. EMA	5:30	Search and Recovery in Island Lake IL	Search and Recovery	McHenry County

Total Call outs 1

Planned Event

11/6/2012	Kane Co. Clerk	17:00	Election Detail at Bldg B, ECC and 540 N. Randall	Traffic Control and Scene Lighting	Kane County
11/10/2012	Kand Co. Enviro	7:00	Recycling Extravaganza at 540 N. Randall	Traffic Control	St. Charles
11/17/2012	Big Rock Fire	9:00	Fire Fighter Dawn Brown's Funeral	Traffic, Crowd, & Media Control	Big Rock
11/24/2012	St. Charles Police	16:00	St. Charles Holiday Parade on Rt. 64	Traffic Control	St. Charles

Total for Assistance 5

OEM Assistance Locations

2012

December 2011 January 2012 February March April May June July August September October November FY Total

Communities

Algonquin							1						1
Aurora													0
Barrington Hills													0
Bartlett													0
Batavia													0
Big Rock												1	1
Burlington													0
Campton Hills	1			1		1				2			5
Carpentersville										1			1
East Dundee						1							1
Elburn								1					1
Elgin												3	3
Geneva				1	2	1	1			2			7
Gilberts													0
Hampshire			1	1		2	1						5
Hoffman Estates													0
Huntley													0
Kaneville													0
Lily Lake				1									1
Maple Park													0
Montgomery						1							1
North Aurora		1							3				4
Pingree Grove								2					2
Sleepy Hollow								1	1				2
South Elgin								1		2			3
St. Charles									1		1	1	3
Sugar Grove													0
Virgil				1									1
Wayne													0
West Dundee										1	1		2

Townships

Aurora						2							2
Batavia				1						1			2
Big Rock		1		1									2
Blackberry	1												1
Burlington										2			2
Campton				1				1					2
Dundee													0
Elgin										2			2
Geneva	1							1					2
Hampshire						1							1
Kaneville							1						1
Plato					1								1
Rutland		2		1									3
St. Charles	1					1	1				1		4
Sugar Grove		1	1	1		1							4
Virgil						1	1						2
County-wide (Weather Events)					4	3	5	1	1	1			15

Outside the County Assistance

McHenry Co. EMA		1									1	1	3
-----------------	--	---	--	--	--	--	--	--	--	--	---	---	---

Assist Another County Office					1		1	1				2	5
------------------------------	--	--	--	--	---	--	---	---	--	--	--	---	---

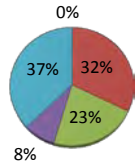
Monthly Total	4	6	2	5	5	11	13	15	10	16	6	5	98
---------------	---	---	---	---	---	----	----	----	----	----	---	---	----

Calls for Assistance & Details

Emergency Management Volunteer Group Activity Report FY 2013

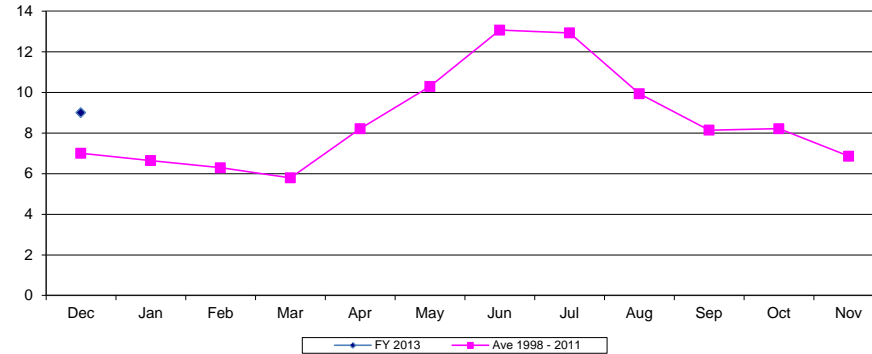
	Dec	Jan	Feb	Mar	Apr	May	Jun	Jul	Aug	Sep	Oct	Nov	Total Hours	Ave Hours
Severe Weather	0.00												0.00	0.00
Assist to KCSO	145.00												145.00	145.00
Assist to Other Agency	100.25												100.25	100.25
Agency Training	36.50												36.50	36.50
Admin & Maintenance	167.50												167.50	167.50
Monthly Manhours														
FY 2013	449.25	0.00	0.00	0.00	0.00	0.00	0.00	0.00	0.00	0.00	0.00	0.00	449.25	
Average 1998 - 2011	389.61	442.02	541.52	553.04	682.88	719.45	878.72	821.24	757.55	593.55	573.73	437.20	7,389.51	615.79
Number of Call Outs														
FY 2013	9												9	9
Average 1998 - 2011	7	6.64	6.29	5.79	8.21	10.29	13.07	12.93	9.93	8.14	8.21	6.86	103.36	9

Year to Date Comparison by Activity

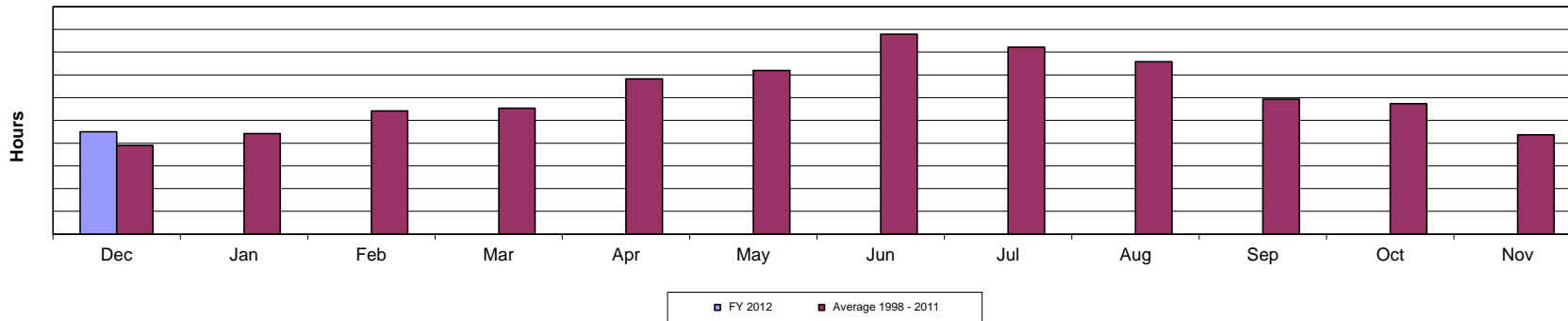


- Severe Weather
- Assist to KCSO
- Assist to Other Agency
- Agency Training
- Admin & Maintenance

Agency Call-Outs



FY 2013 Volunteer Manhours vs Monthly Average



December 2012 OEM Callout Breakdown

Date	Called by	Paged Out	Where / What	We assisted with:	Area Assisted:
12/1/2012	KCSO	21:00	Accident Rt. 38 and Pouley rd.	Traffic Control and Scene Lighting	Blackberry Twp.
12/6/2012	KCSO	10:41	Accident Rt. 72 East of Big Timber Rd.	Traffic Control	Rutland Twp.
12/7/2012	KCSO	7:54	Accident Granart Rd and Mary Dr.	Traffic Control	Village of Big Rock
12/9/2012	Wayne Police	17:09	Accident Dunham Rd. and Surrey Rd.	Traffic Control and Scene Lighting	Village of Wayne
12/10/2012	KCSO	19:49	Accident Jericho Rd. and Ashe Rd.	Traffic Control and Scene Lighting	Sugar Grove Twp.
12/20/2012	KCSO	2:47	House Fire at 39W491 Rt. 20	Traffic Control	Plato Twp.
12/20/2012	KCSO	9:43	Accident 7N300 Rt 31	Traffic Control	Elgin Twp.
12/20/2012	KCSO	11:33	Accident Rt. 25 and May Lane	Traffic Control	St. Charles Twp.
12/31/2012	Hampshire Police	1:20	Accident Rt 72 and Centennial dr.	Traffic Control	Village of Hampshire

Total Call outs 9

Planned Event

12/5/2012	Pingree Grove Police	8:30	Holiday Christmas Train	Traffic Control	Village of Pingree Grove
-----------	----------------------	------	-------------------------	-----------------	--------------------------

Total for Assistance 1



AGENDA ITEM EXECUTIVE SUMMARY

Agenda Item #

- Resolution
 Ordinance

Name: FY2013 HAZARDOUS MATERIALS EMERGENCY PREPAREDNESS PLANNING GRANT

Presenter/Sponsor: Donald Bryant

Budget Information: Was this item budgeted? Yes No N/A

Appropriation Amount: \$3,500.00

If not budgeted, explain funding source

SUMMARY: The Hazardous Materials Emergency Preparedness Planning Grant is awarded to help support the preparedness efforts of the Kane County Local Emergency Planning Committee (LEPC).

Attachments: None

Detailed information available from:

Staff Name: Donald Bryant

Phone: 630.208.2051

Resolution/Ordinance Tracking:

Assigned Committee: Public Health Sent to: Executive on: 02/06/2013

If Other, specify:

Committee Remarks:

Next Committee:

Sent to: on:

If Other, specify:

Committee Remarks:

Next Committee:

Sent to: on:

Committee Remarks:

County Board Date: 02/13/2013

STATE OF ILLINOIS

COUNTY OF KANE

RESOLUTION NO 13 -

FY2013 HAZARDOUS MATERIALS EMERGENCY PREPAREDNESS PLANNING GRANT

WHEREAS, the State of Illinois has awarded Kane County a FY2013 Hazardous Materials Emergency Preparedness (HEMP) Planning Grant in the amount of \$3,500.00; and

WHEREAS, the objective of the HEMP grant is to help support the preparedness efforts of the Kane County Local Emergency Planning Committee (LEPC).

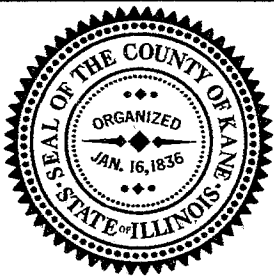
NOW, THEREFORE, BE IT RESOLVED by the Kane County Board that the Chairman thereof is hereby authorized to enter into said grant agreement with the State of Illinois as part of the Hazardous Materials Emergency Preparedness Grant Program.

Passed by the Kane County Board on February 13, 2013

John A. Cunningham
Clerk, County Board
Kane County, Illinois

Christopher J. Lauzen
Chairman, County Board
Kane County, Illinois

Vote:
Yes _____
No _____
Voice _____
Abstentions _____



AGENDA ITEM EXECUTIVE SUMMARY

Agenda Item #

- Resolution
 Ordinance

Name: Vehicle Replacement and Budget Adjustment Office of Emergency Management

Presenter/Sponsor:

Donald Bryant

Budget Information: Was this item budgeted? Yes No N/A

Appropriation Amount: \$26,960.00

If not budgeted, explain funding source

Budget Adjustment from the Contingency Line Item

SUMMARY: The OEM needs to replace a 2001 Chevrolet Police Impala due to age, mileage and increasing repair costs. This vehicle meets the County's Vehicle Replacement Policy and the OEM has provided the appropriate documentation. The replacement vehicle will be a 2013 Ford Police Sedan with the appropriate emergency equipment.

Attachments: Vehicle Request Form and Replacement Guidelines Calculation Sheet.

Detailed information available from:

Staff Name: Donald Bryant

Phone: 630-208-2051

Resolution/Ordinance Tracking:

Assigned Committee: Public Health Sent to: Administration on:

If Other, specify:

Committee Remarks:

Next Committee: Administration Sent to: Finance/Budget on:

If Other, specify:

Committee Remarks:

Next Committee: Finance/Budget Sent to: Executive on:

Committee Remarks:

County Board Date: 02/13/2013

STATE OF ILLINOIS

COUNTY OF KANE

RESOLUTION NO 13-

**VEHICLE REPLACEMENT and BUDGET ADJUSTMENT
OFFICE OF EMERGENCY MANAGEMENT**

WHEREAS, the Office of Emergency Management needs to replace a 2001 Chevrolet Police Impala due to advanced age and mileage; and

WHEREAS, a replacement 2013 Ford Police Sedan will cost \$23,960; and

WHEREAS, emergency equipment for said replacement vehicle will cost an additional \$3,000.

NOW, THEREFORE, BE IT RESOLVED by the Kane County Board that the Office of Emergency Management is hereby authorized to purchase a 2013 Ford Police Sedan at a cost of \$23,960, selecting the lowest bid by Currie Motors, Fankfort, Il., along with purchasing associated emergency equipment at a cost of \$3,000 from a separate vendor, bringing the total cost for the replacement vehicle to \$26,960; and

NOW, THEREFORE, BE IT FURTHER RESOLVED by the Kane County Board that \$26,960 be transferred from the County’s contingency line item to the OEM’s 2013 budget:

001.510.510.70070 Automotive Equipment + \$26,960.00
001.900.900.85000 Contingency – Allowance for Budget Expense (\$26,960.00)

Line item	Line item Description	Was personnel/item/service Approved in original budget or a subsequent Budget revision?	Are funds <u>currently</u> available for this personnel/item/service in the specified line item?	If funds are not currently available in the specified line item, where are the funds available?
001.510.510.70070	Automotive Equipment	No	No	001.900.900.85000

Passed by the Kane County Board on _____

John A. Cunningham
Clerk, County Board
Kane County, Illinois

Christopher J. Lauzen
Chairman, County Board
Kane County, Illinois

Vote:

YES

NO

VOICE

Abstentions

Kane County Vehicle Request Form

Section 1 – Department Information

Department: Office of Emergency Management	Division:	Date: 12/10/2012
Address: 719 S. Batavia Ave., Bldg C	City: Geneva	Zip Code: 60134
Department Contact Person: Donald Bryant	Title: Director	
Telephone: 630.208.2051	email: bryant@kcoem.org	

Section 2 – Current Vehicle Information

This request is to: Replace an existing vehicle OR Add a new vehicle to the fleet

Does the replacement vehicle meet the County's replacement guidelines (age, mileage, reliability, maintenance and repair costs and conditions as calculated on the Replacement Guideline Calculation, attached)? Yes No

Vehicle being replaced:	Year: 2001	Make: Chevrolet	Model: Impala
Vehicle Type:	V.I.N. #: 2G1WF55K619347431	Current Mileage: 109300	
<input checked="" type="checkbox"/> Sedan	<input type="checkbox"/> Full size <input type="checkbox"/> Intermediate <input type="checkbox"/> Compact <input checked="" type="checkbox"/> Police Pkg <input checked="" type="checkbox"/> Special Equip.		
<input type="checkbox"/> SUV	<input type="checkbox"/> Full size <input type="checkbox"/> Intermediate <input type="checkbox"/> Compact <input type="checkbox"/> 4x4 <input type="checkbox"/> 4x2 <input type="checkbox"/> Special Equip. <small>Additional justification required for all SUV requests – please attach separate justification narrative</small>		
<input type="checkbox"/> Pass. Van	<input type="checkbox"/> 7 passenger <input type="checkbox"/> 12 passenger <input type="checkbox"/> Special Equipment		
<input type="checkbox"/> Cargo Van	<input type="checkbox"/> mini van <input type="checkbox"/> ¾-ton <input type="checkbox"/> 1-ton <input type="checkbox"/> Special Equipment		
<input type="checkbox"/> Pickup	<input type="checkbox"/> Compact <input type="checkbox"/> 4x4 <input type="checkbox"/> Standard Cab <input type="checkbox"/> Short Box <input type="checkbox"/> Special Equip. <input type="checkbox"/> ½-ton <input type="checkbox"/> 4x2 <input type="checkbox"/> Extended Cab <input type="checkbox"/> Long Box <input type="checkbox"/> ¾-ton <input type="checkbox"/> Crew Cab <input type="checkbox"/> 1-ton		
Original Purchase Price: 17,796.10	Current Estimated Fuel Efficiency (miles per gallon): 20		

Section 3 – Requested Vehicle

What will be the primary use of this vehicle?

Transportation of people Number of people:
 Emergency response
 Transportation of equipment, materials, or supplies (explain below)
 Transportation of both people and equipment, materials, or supplies (explain below)
 Other

Please explain the selection from the previous question
 Vehicle is used as an emergency response vehicle and to carry people, equipment and supplies.

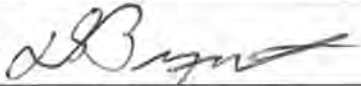

Is this vehicle authorized for take-home use? Yes (explain below) No

OEM director is on call 24/7 365

Vehicle will be assigned to: Specific Individual Work Group or Crew Motor Pool or Shared Use

How often will this vehicle be used: Multiple 8 hour shifts per day Daily Weekly Monthly Pool Car

Primary parking location of the requested vehicle: 558 Lincoln Ave., West Dundee

Type of Vehicle Requested	
<input checked="" type="checkbox"/> Sedan	<input type="checkbox"/> Full size <input type="checkbox"/> Intermediate <input type="checkbox"/> Compact <input checked="" type="checkbox"/> Police Package <input checked="" type="checkbox"/> Special Equipment
<input type="checkbox"/> SUV	<input type="checkbox"/> Full size <input type="checkbox"/> Intermediate <input type="checkbox"/> Compact <input type="checkbox"/> 4x4 <input type="checkbox"/> 4x2 <input type="checkbox"/> Special Equipment <small>Additional justification required for all SUV requests - please attach separate justification narrative</small>
<input type="checkbox"/> Pass. Van	<input type="checkbox"/> 7 passenger <input type="checkbox"/> 12 passenger <input type="checkbox"/> Special Equipment
<input type="checkbox"/> Cargo Van	<input type="checkbox"/> mini van <input type="checkbox"/> ¾-ton <input type="checkbox"/> 1-ton <input type="checkbox"/> Special Equipment
<input type="checkbox"/> Pickup	<input type="checkbox"/> Compact <input type="checkbox"/> 4x4 <input type="checkbox"/> Standard Cab <input type="checkbox"/> Short Box <input type="checkbox"/> Special Equipment <input type="checkbox"/> ½-ton <input type="checkbox"/> 4x2 <input type="checkbox"/> Extended Cab <input type="checkbox"/> Long Box <input type="checkbox"/> ¾-ton <input type="checkbox"/> Crew Cab <input type="checkbox"/> 1-ton
Fuel Type (Choose One): <input checked="" type="checkbox"/> Gasoline <input type="checkbox"/> Gasoline/Electric Hybrid <input type="checkbox"/> Diesel <input type="checkbox"/> Flex-Fuel (E-85)	
Projected average monthly mileage: 830	
Fuel efficiency of replacement vehicle (miles per gallon - city and highway): EPA-certified fuel economy of 18 mpg city, 26 mpg highway	
Is the vehicle(s) to be purchased from the Illinois state public bid list? <input type="checkbox"/> Yes <input checked="" type="checkbox"/> No If no, why not? This vehicle is not on the State contract. Pricing for this vehicle was obtained through the Purchasing Dept. from the Suburban Purchasing Cooperative.	
When not in use, can this vehicle be used by other County employees outside department / office? <input type="checkbox"/> Yes <input checked="" type="checkbox"/> No (explain below)	
Vehicle needs to be available to the OEM Director 24/7 and is equipt with emergency warning and communications equipment.	
Provide detailed description and justification for any special or miscellaneous equipment (e.g., trailer hitch, spot light, tool box, lift gate, partitions, etc.) requested. Emergency equipment such as warning lights, siren, and communications equipment will be required for this vehicle.	
Section 4 - Signatures	
Requesting Department Director's / Elected Officer's Signature: 	Date: 12-10-2012
Fleet Manager's Signature: 	Date: 12-11-12
Request <input checked="" type="checkbox"/> Approved <input type="checkbox"/> Denied	Date:
Reason for denial:	

Replacement Guidelines Calculation Sheet

Dept:OEM

Date:12/11/2012

Vehicle:

2001 Chevy Impala

Factor	Points	Explanation
Age	12	2001 model
Miles	11	110,000 miles/ with extended idle times
Type of service	5	Emergency response vehicle
Reliability	1	Mostly normal maintenance every few months
M&R Costs	5	M&R costs exceed current value of vehicle
Condition	2	Normal wear and corrosion for a 12 year old vehicle
Total points	36	

Date evaluated:

11-Dec Bill Edwards



AGENDA ITEM EXECUTIVE SUMMARY

Agenda Item #

- Resolution
 Ordinance

Name: **AMENDING THE SCHEDULE OF FEES FOR ANIMAL CONTROL SERVICES**Presenter/Sponsor: **Barbara Jeffers, Executive Director**Budget Information: Was this item budgeted? Yes No N/AAppropriation Amount:

If not budgeted, explain funding source

SUMMARY: The current rate for the 20 municipalities has remained in effect since 2007.

The 2% increase is being requested to keep up with the rate of inflation. The 2% increase is reflective of the following fees:

Pick up stray, sick, or injured animals (includes euthanasia for injured wildlife)	\$ 102.00
Board, euthanasia, and cremation fee for unclaimed animals by their owner	\$ 204.00
Additional boarding charges per day if needed such as in litigation situations	\$ 26.00
Additional transport fees (e.g. for court hearings)	\$ 102.00

Attachments:

Detailed information available from:

Staff Name: **Barbara Jeffers**Phone: **630-444-3021**

Resolution/Ordinance Tracking:

Assigned Committee: Sent to: on: If Other, specify: Committee Remarks: Next Committee: Sent to: on: If Other, specify: Committee Remarks: Next Committee: Sent to: on: Committee Remarks: County Board Date:

STATE OF ILLINOIS

COUNTY OF KANE

ORDINANCE NO. 13-

AMENDING THE SCHEDULE OF FEES FOR ANIMAL CONTROL SERVICES

WHEREAS, The Kane County Board deems it necessary and desirable to amend the current schedule of fees for animal control services provided by the county.

NOW, THEREFORE, BE IT ORDAINED by the Kane County Board that the Kane County Animal Control Ordinance and the Kane County Code be and is hereby amended as follows:

Section 5-49(a) Fees

Section 1. Effective February 13, 2013, the fees to municipalities contracting for animal control services with the County shall be as follows:

Pick up stray, sick, or injured animals (includes euthanasia for injured wildlife)	\$ 102.00
Board, euthanasia, and cremation fee for unclaimed animals by their owner	\$ 204.00
Additional boarding charges per day if needed such as in litigation situations	\$ 26.00
Additional transport fees (e.g. for court hearings)	\$ 102.00

No fees shall be charged if the animal is reclaimed by its owner and applicable fees paid.

Sections 2 thru 7 remain the same.

Line Item	Line Item Description	Was personnel/item/service approved in original budget or a subsequent budget revision?	Are funds currently available for this personnel/item/service in the specific line item?	If funds are not currently available in the specified line item, where are the funds available?
290.500.000.34600	Animal Pickup Fees	N/A	N/A	

Passed by the Kane County Board on February 13, 2013.

John A. Cunningham
Clerk, County Board
Kane County, Illinois

Christopher J. Lauzen
Chairman, County Board
Kane County, Illinois

Vote:

Yes _____

No _____

Voice _____

Abstentions _____



AGENDA ITEM EXECUTIVE SUMMARY

Agenda Item #

- Resolution
 Ordinance

Name

AUTHORIZING EXCEPTION TO THE FINANCIAL POLICIES REGARDING PERSONNEL
HIRING AND REPLACEMENT: ANIMAL CONTROL WARDEN

Presenter/Sponsor:

Barbara Jeffers, Executive Director

Budget Information:

Was this item budgeted?

 Yes No N/A

Appropriation Amount:

\$1,745 through \$2,635 monthly

If not budgeted,
explain funding
source**SUMMARY:**

The Kane County Animal Control Department is responsible for the enforcement of the Animal Control Ordinance of Kane County and has built an animal control facility for the purpose of providing needed resources for the Department in carrying out its mission, specifically to be used as a shelter for seized, stray, homeless, abandoned, or unwanted dogs or other animals.

The Animal Control Warden is responsible to answer all calls pertaining to stray or injured dogs, bite cases, and possible rabid wildlife. They pickup and impound stray dogs, transport specimens of biting animals to the State Lab, and investigates complaints of violations to the animal ordinance and issues citations to owners violating such laws.

The Executive Director of the Kane County Health Department/Animal Control is requesting an exception to the hiring moratorium as the continuance of vacancies in this position will have a negative operational impact on the Department's ability to successfully manage operations and carry out its mission.

Attachments:

Detailed information available from :

Staff Name:

Barbara Jeffers, Executive Director

Phone:

630-444-3021

Resolution/Ordinance Tracking:

Assigned Committee:

Sent to:

on:

If Other, specify:

Committee Remarks:

Next Committee:

Sent to:

on:

If Other, specify:

Committee Remarks:

Next Committee:

Sent to:

on:

Committee Remarks:

County Board Date:

STATE OF ILLINOIS

COUNTY OF KANE

RESOLUTION NO. 13-

**AUTHORIZING EXCEPTION TO THE COUNTY FINANCIAL POLICIES REGARDING PERSONNEL
HIRING AND REPLACEMENT: ANIMAL CONTROL WARDEN**

WHEREAS, on September 9, 2008 the Kane County Board had deemed it necessary to adopt by Resolution a moratorium on the hiring of new County personnel and the replacement of existing or future personnel vacancies; and

WHEREAS, the Kane County Animal Control Department is responsible for the enforcement of the Animal Control Ordinance of Kane County; and

WHEREAS, Kane County has built an animal control facility for the purpose of providing needed resources for the Department in carrying out its mission, specifically to be used as a shelter for seized, stray, homeless, abandoned, or unwanted dogs or other animals; and

WHEREAS, currently staffing levels for operations of the shelter have fallen below those needed to provide care to animals.

WHEREAS, this position with a salary range of \$1,745 through \$2,635 monthly (40 hour work week), has been included in the FY13 budget and therefore passage of this resolution does not require a budget amendment for fiscal year 2013.

WHEREAS, the Executive Director of the Kane County Health Department/Animal Control has requested the Kane County Board to allow exception to the hiring moratorium as the continuance of a shortage of staff will have a negative operational impact on the Department's ability to efficiently and effectively conduct the operations of the shelter.

NOW, THEREFORE, BE IT RESOLVED by the Kane County Board that the Chairman thereof allow the Kane County Animal Control Department to hire a replacement to fill the Animal Control Warden vacancy so the department has three Animal Control Wardens.

Line Item	Line Item Description	Was personnel/item/service approved in original budget or a subsequent budget revision?	Are funds currently available for this personnel/item/service in the specific line item?	If funds are not currently available in the specified line item, where are the funds available?
290.500.500.40000	Salary/Wages	Yes	Yes	N/A

Passed by the Kane County Board on February 13, 2013.

John A. Cunningham
Clerk, County Board
Kane County, Illinois

Christopher J. Lauzen
Chairman, County Board
Kane County, Illinois

Vote:
Yes _____
No _____
Voice _____
Abstentions _____