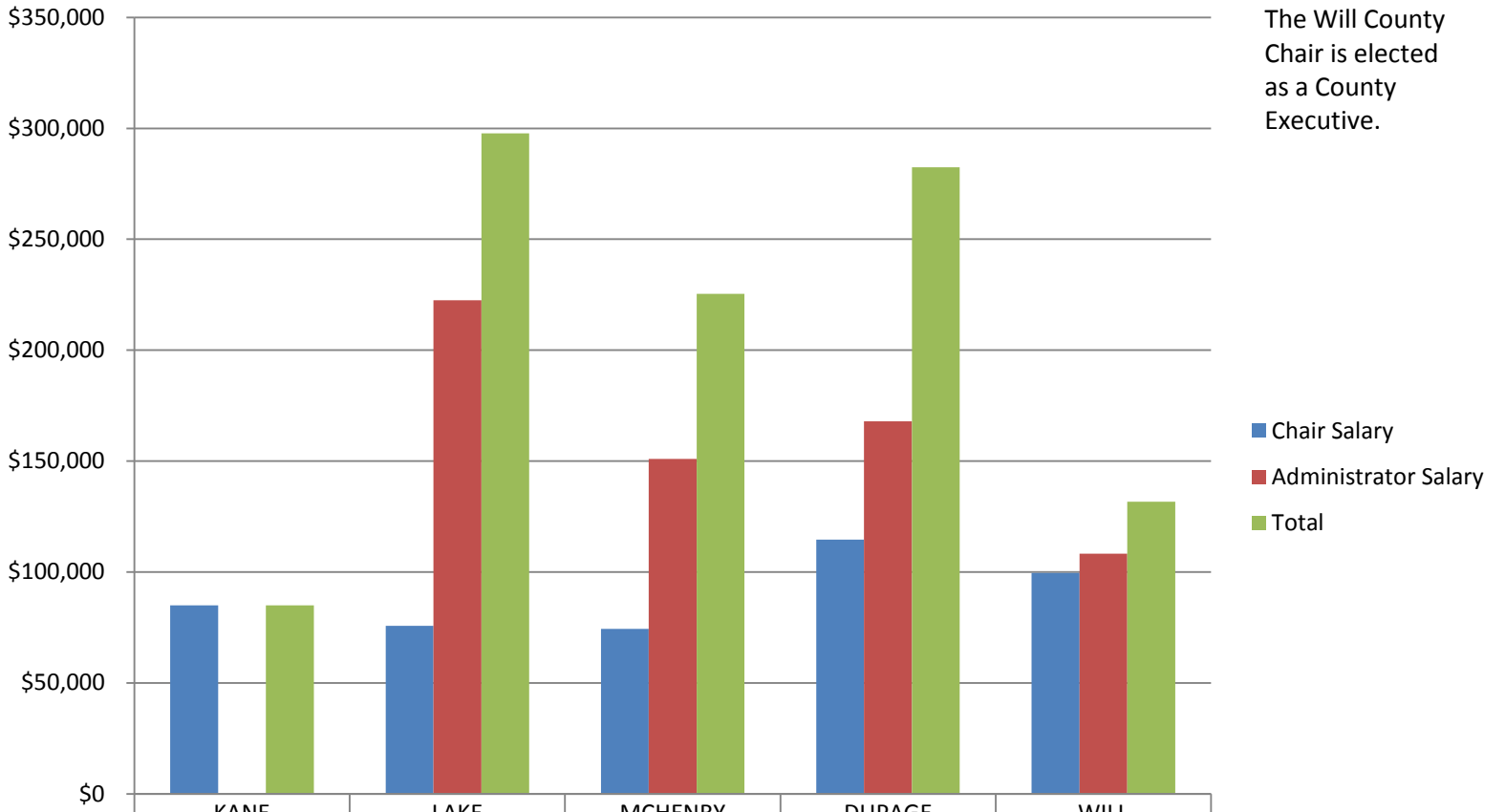


KANE COUNTY DEPARTMENTAL ORGANIZATION AND MANAGEMENT STRUCTURE REPORT

2010 and 2011

Chair's Overview

Chart 2 - Salaries of Chairs and Administrators

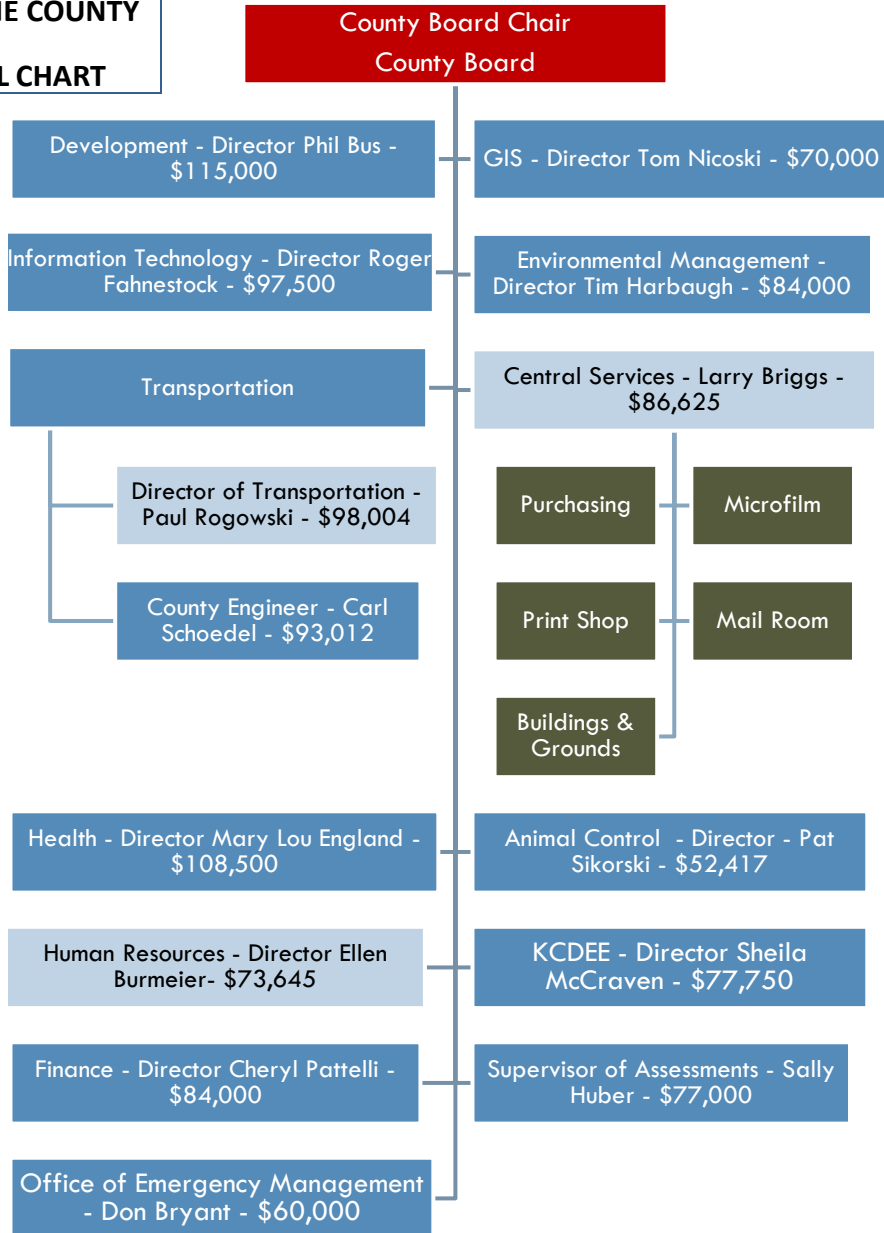


The Will County Chair is elected as a County Executive.

■ Chair Salary
■ Administrator Salary
■ Total

	KANE	LAKE	MCHENRY	DUPAGE	WILL
■ Chair Salary	\$85,000	\$75,712	\$74,406	\$114,563	\$99,616
■ Administrator Salary	0	\$222,547	\$151,000	\$167,900	\$108,212
■ Total	\$85,000	\$297,759	\$225,406	\$282,463	\$131,712

**CHART 3 - 2004 KANE COUNTY
ORGANIZATIONAL CHART**



Sheriff

911 Director - Dave Evenson - \$80,500

All departments reported directly to County Board Chair

**Total Directors = 15
Total Salaries = \$1,257,953**

- light blue boxes indicate positions that were eliminated after 2004. Other staff in Central Services was reduced by approximately 8 positions.

CHART 4 - 2010 KANE COUNTY ORGANIZATIONAL CHART

County Board Chair
County Board

Finance Division
Purchasing Division*

Finance
Executive Director Cheryl Pattelli
\$126,910
6 staff

Health
Executive Director Paul Kuehnert
\$131,325
223 staff

Animal Control Division*
Office of Community Health Resources
Division of Disease Prevention
Division of Health Promotion
Office of Emergency Management*
Office of Community Reinvestment*

GIS Division*
Administration & Finance Division
Operations & MIS Division
Network & Telephone Division
Applications Division
Systems Division
Public Safety Systems Division*
Print Shop*
Microfilm*

Information Technology
Executive Director Roger Fahnestock
\$132,828
44 staff

Development & Transportation
Executive Director – Vacant
Prior Salary - \$153,181
154 staff

Facilities, Subdivision & Environmental Mgmt Division*
Mail Room
Environmental Management
Facilities
Water Resources
Subdivisions

Human Resources Division*
KCDEE
Payroll*
Veterans Assistance - limited support

Human Resources Management
Executive Director Sheila McCraven
\$119,138
41 staff

Supervisor of Assessments
Mark Armstrong
\$108,150
35 staff

Transportation Division*

Development
Economic Development
Planning & Special Projects
Building & Zoning
Administrative Services

* - indicates new division added under this executive direction position

KaneComm
Director Jennifer Baustian
\$93,000
24 staff

Total Directors = 7
Total Director Salaries = \$864,532*
***includes prior salary of Executive Director of Development and Transportation which is now vacant to indicate salaries as if all positions were filled. Without this salary, the total is \$711,351.**

EMPLOYEES BY DEPARTMENT AND ELECTED OFFICES - 2009 DATA

■ Total Department Employees ■ Total Elected Office Employees

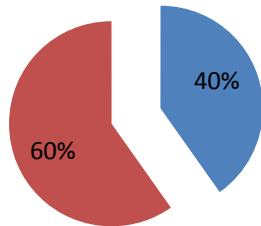


CHART 7

SALARIES BY DEPARTMENTS AND ELECTED OFFICES - 2009 DATA

■ County Department Salaries ■ Elected Offices Salaries

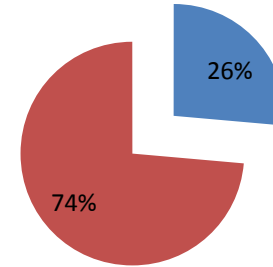


CHART 8

EMPLOYEES BY DEPARTMENT AND ELECTED OFFICES - 2004 DATA

■ Total Department Employees ■ Total Elected Office Employees

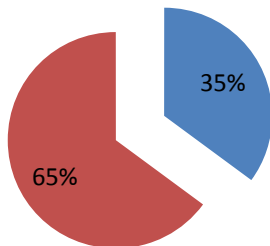


CHART 9

SALARIES BY DEPARTMENTS AND ELECTED OFFICES - 2004 DATA

■ County Department Salaries ■ Elected Offices Salaries

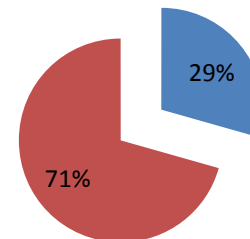


CHART 10

Department employees increased from 2004 to 2009 primarily due to departments taking over functions previously performed by elected offices. Note however, that department salaries decreased.

TABLE 11 – COUNTY FUNCTIONS BY DEPARTMENTS (functions may be performed by other counties but are not separate departments with designated staff or are handled by other officials)	County Administration	Water Resources Public Works	Emergency Management	GIS	Veterans Commission	Health Facility	911
KANE	0	X	X	X	X	0	X
LAKE	X	X	0	0	0	0	0
MCHENRY	X	0	X	X	0	X	0
WILL	X	0	X	X	X	X	X
DUPAGE	X	X	X	0	0	X	0
	X	X	0	0	0	0	0

Table 17 - Population

Ranking - High to Low	Population
DUPAGE	904,161
LAKE	712,453
WILL	668,217
KANE	511,892
MCHENRY	318,641
KENDALL	103,468

Table 18 – Total Employees

Ranking - High to Low	Employees	Additional county functions not provided in Kane County	Total
LAKE	2,404	Nursing Homes & Health Care Facilities (+238 employees)	2,642
DUPAGE	2,378	Nursing Homes & Health Care Facilities (+123 employees)	2,501
WILL	1,907	Nursing Homes & Health Care Facilities (+271 employees)	2,178
MCHENRY	1,460	Nursing Homes & Health Care Facilities (+106 employees)	1,566
KANE	1,242		1,242
KENDALL	357		357

Chart 19 - Employees Per 100 County Residents

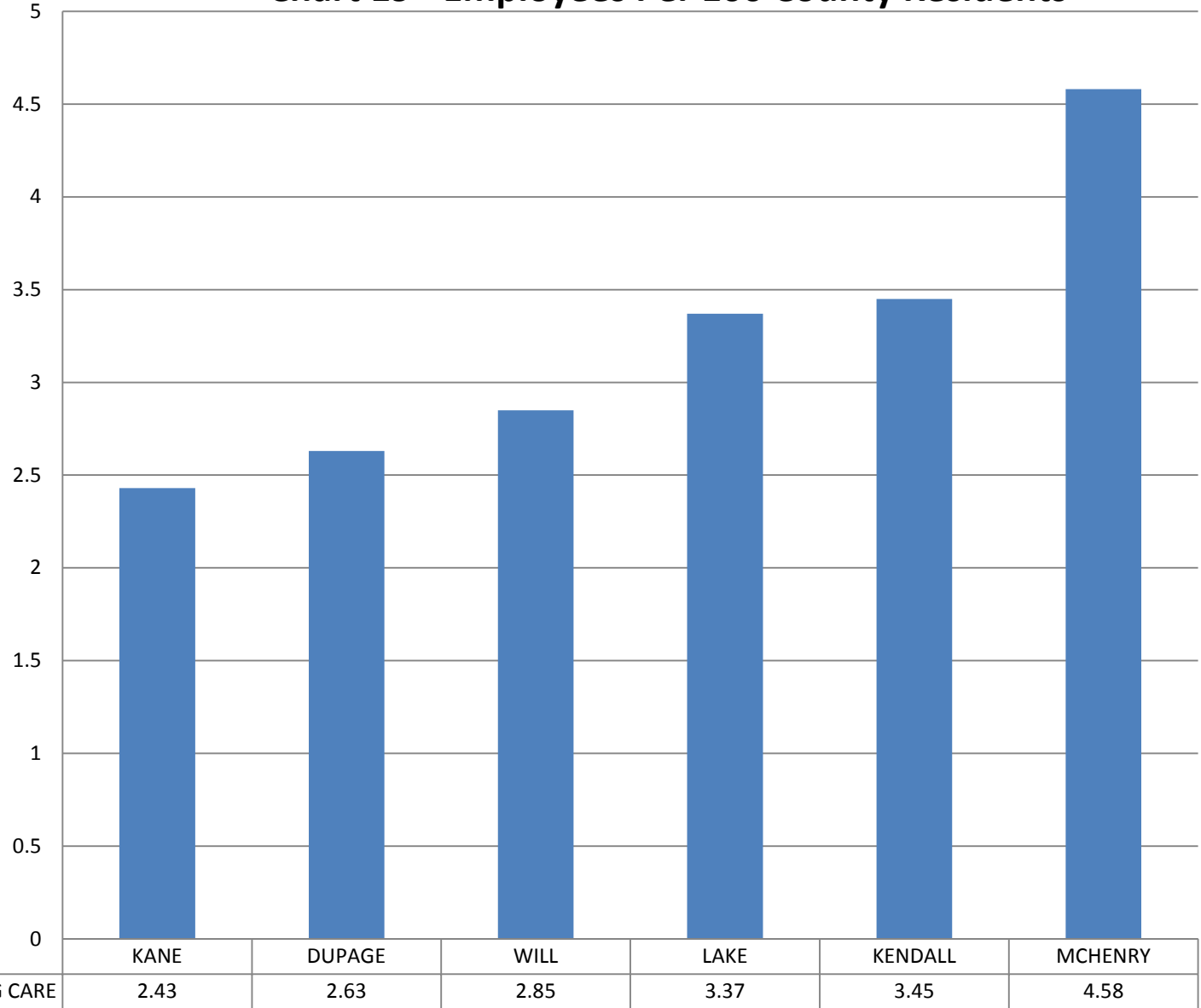
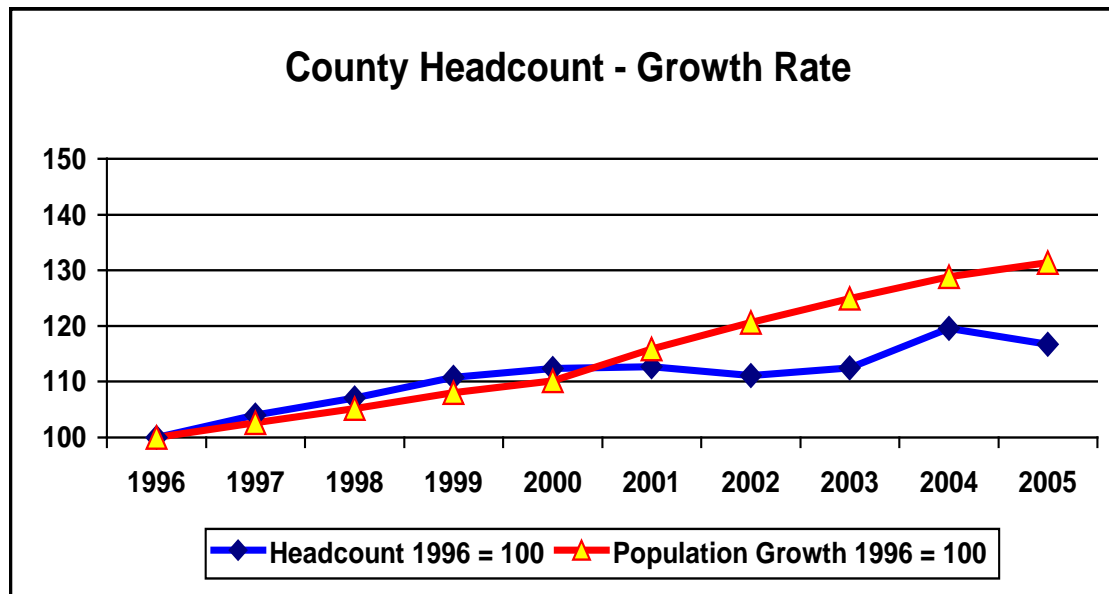


TABLE 20 - TOTAL EMPLOYEE COUNT
 (includes departments and elected offices)

2004	2008	2010
1660	1572	1242

GRAPH 21 - KANE COUNTY 2006 STRATEGIC PLAN



**TABLE 22 - KANE COUNTY
BUDGET**

	2005	2008	2010
TOTAL	\$154,852,352	\$274,844,741	\$168,545,128
GENERAL FUND	\$70,594,683	\$81,107,590	\$72,046,690

BUDGET COMPARISONS

TABLE 23 - COUNTY BUDGETS Capital costs are included for each county so that budget comparisons were comparable	2009 Budget - General Fund	2009 Budget - Special Revenue Funds	Total 2009 Budget - All funds
KENDALL	\$22,936,016	\$58,450,759	\$81,386,775
WILL	\$172,159,422	\$50,856,659	\$223,016,081
KANE	\$74,583,040	\$167,456,196	\$242,039,236
MCHENRY	\$81,238,218	\$162,075,357	\$243,313,575
LAKE	\$315,805,577	\$62,984,806	\$378,790,383
DUPAGE	\$175,661,353	\$255,016,732	\$430,678,085

Chart 24 - Total Operating and Capital Cost Budget per County Resident - 2009

