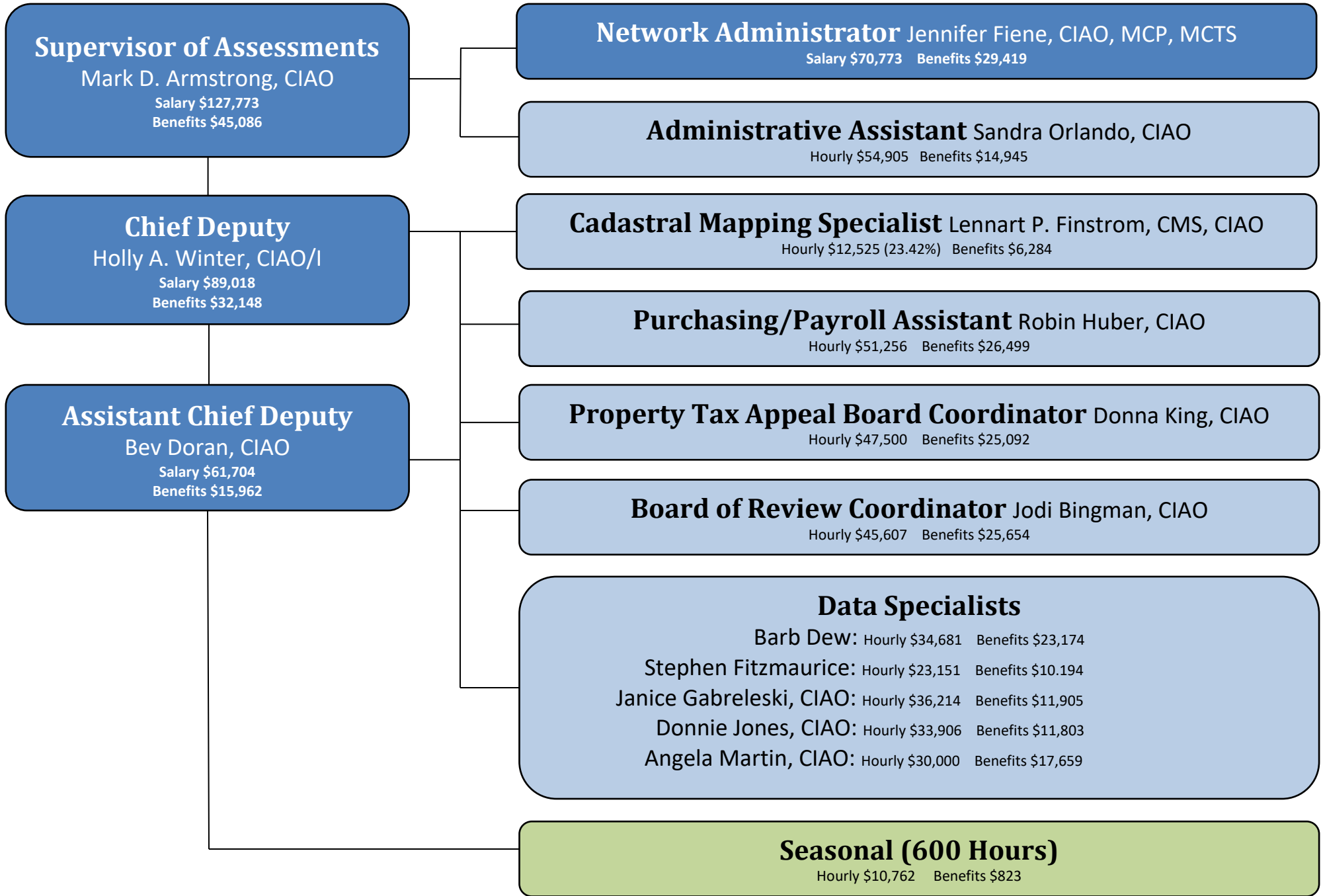


KANE COUNTY ASSESSMENT OFFICE

SALARY AND BENEFIT ORGANIZATIONAL CHART for 2019



Supervisor of Assessments

Mark D. Armstrong, CIAO
Salary \$127,773
Benefits \$45,086

Network Administrator Jennifer Fiene, CIAO, MCP, MCTS

Salary \$70,773 Benefits \$29,419

Administrative Assistant Sandra Orlando, CIAO

Hourly \$54,905 Benefits \$14,945

Chief Deputy

Holly A. Winter, CIAO/I
Salary \$89,018
Benefits \$32,148

Cadastral Mapping Specialist Lennart P. Finstrom, CMS, CIAO

Hourly \$12,525 (23.42%) Benefits \$6,284

Purchasing/Payroll Assistant Robin Huber, CIAO

Hourly \$51,256 Benefits \$26,499

Assistant Chief Deputy

Bev Doran, CIAO
Salary \$61,704
Benefits \$15,962

Property Tax Appeal Board Coordinator Donna King, CIAO

Hourly \$47,500 Benefits \$25,092

Board of Review Coordinator Jodi Bingman, CIAO

Hourly \$45,607 Benefits \$25,654

Data Specialists

Barb Dew: Hourly \$34,681 Benefits \$23,174
Stephen Fitzmaurice: Hourly \$23,151 Benefits \$10,194
Janice Gabreleski, CIAO: Hourly \$36,214 Benefits \$11,905
Donnie Jones, CIAO: Hourly \$33,906 Benefits \$11,803
Angela Martin, CIAO: Hourly \$30,000 Benefits \$17,659

Seasonal (600 Hours)

Hourly \$10,762 Benefits \$823