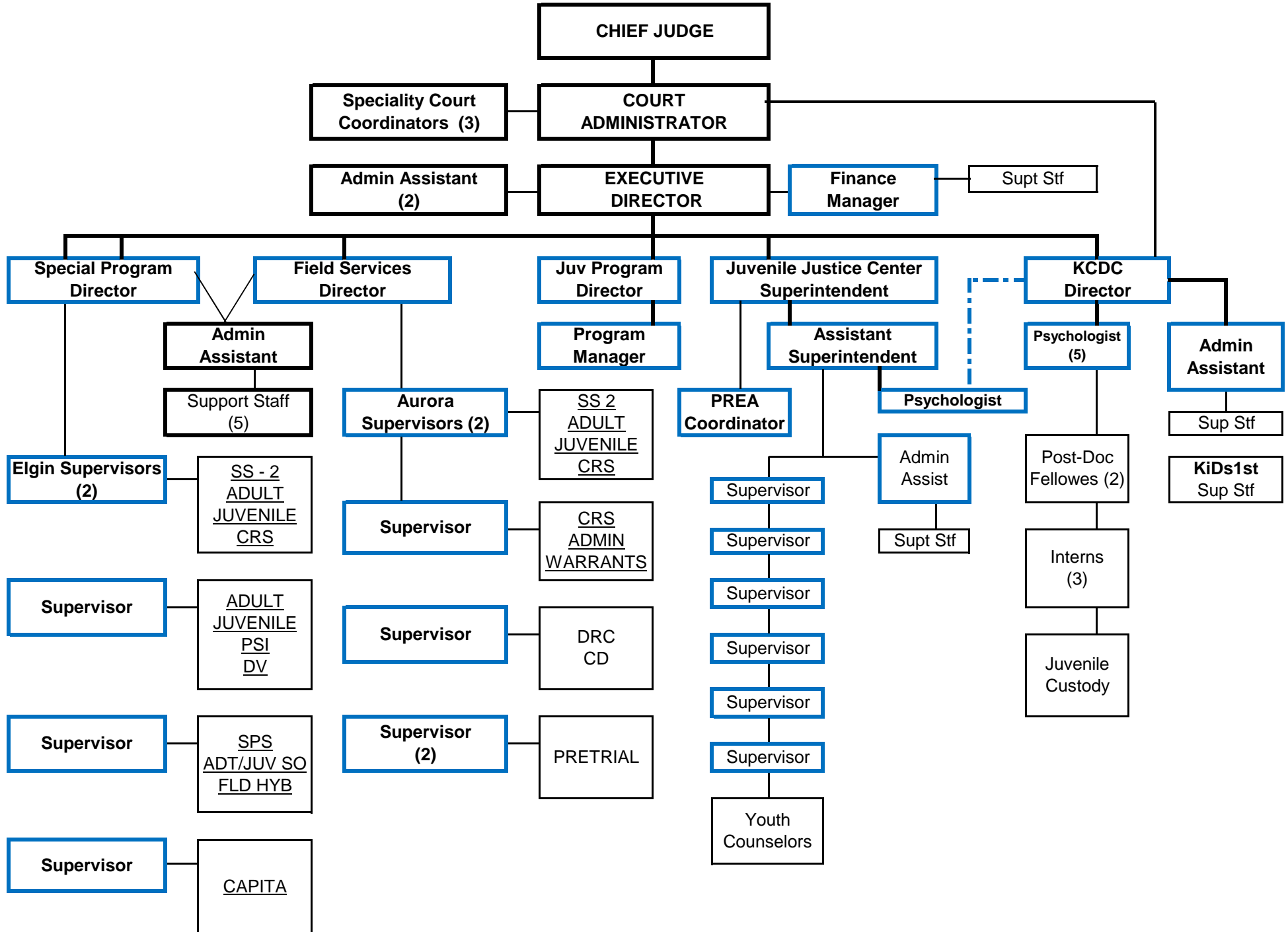
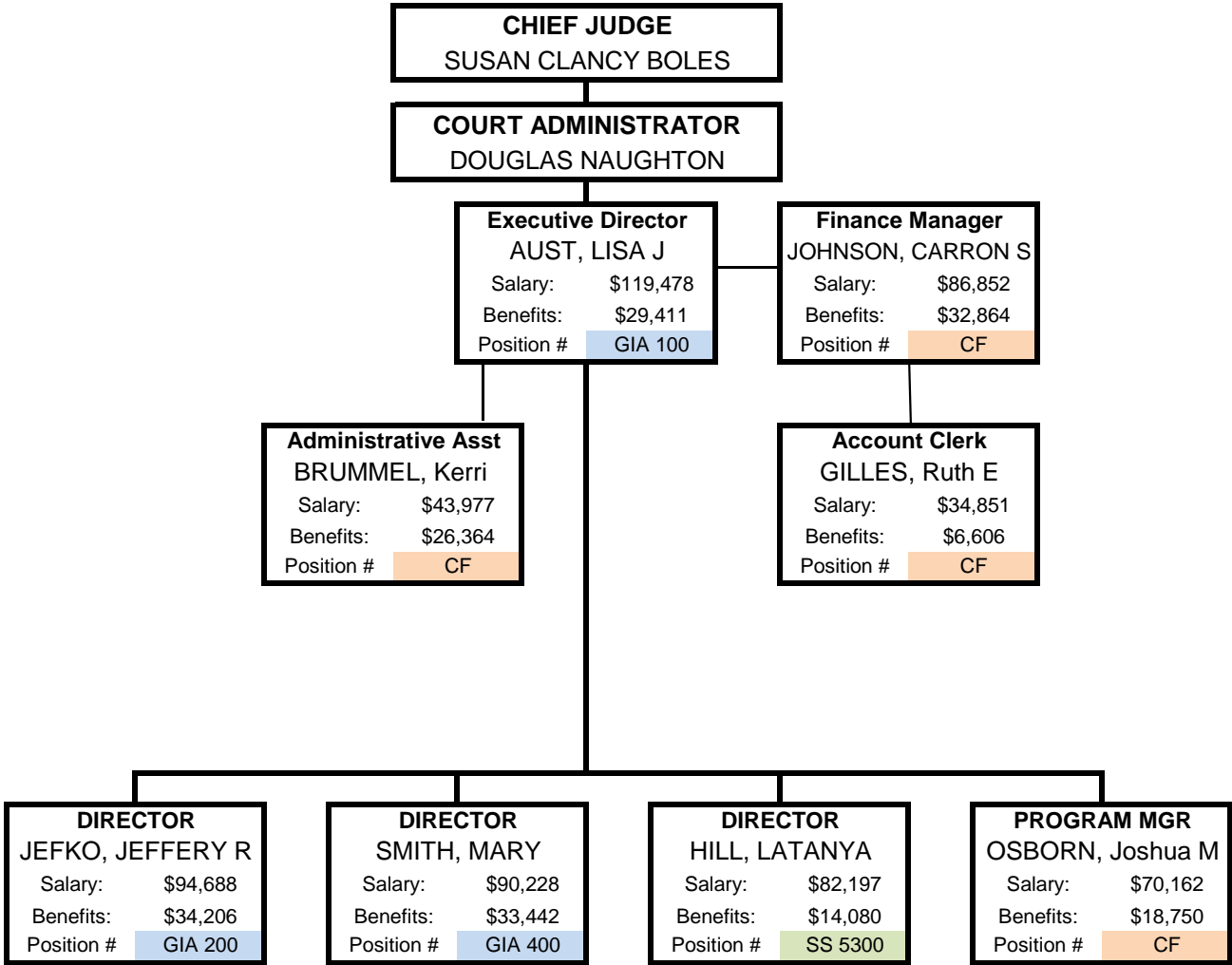


KANE COUNTY COURT SERVICES



ADMINISTRATION



GIA	3
SS	1
CF	4
Positions	8

ADULT COURT SERVICES

CHIEF JUDGE
SUSAN CLANCY BOLES

COURT ADMINISTRATOR
DOUGLAS NAUGHTON

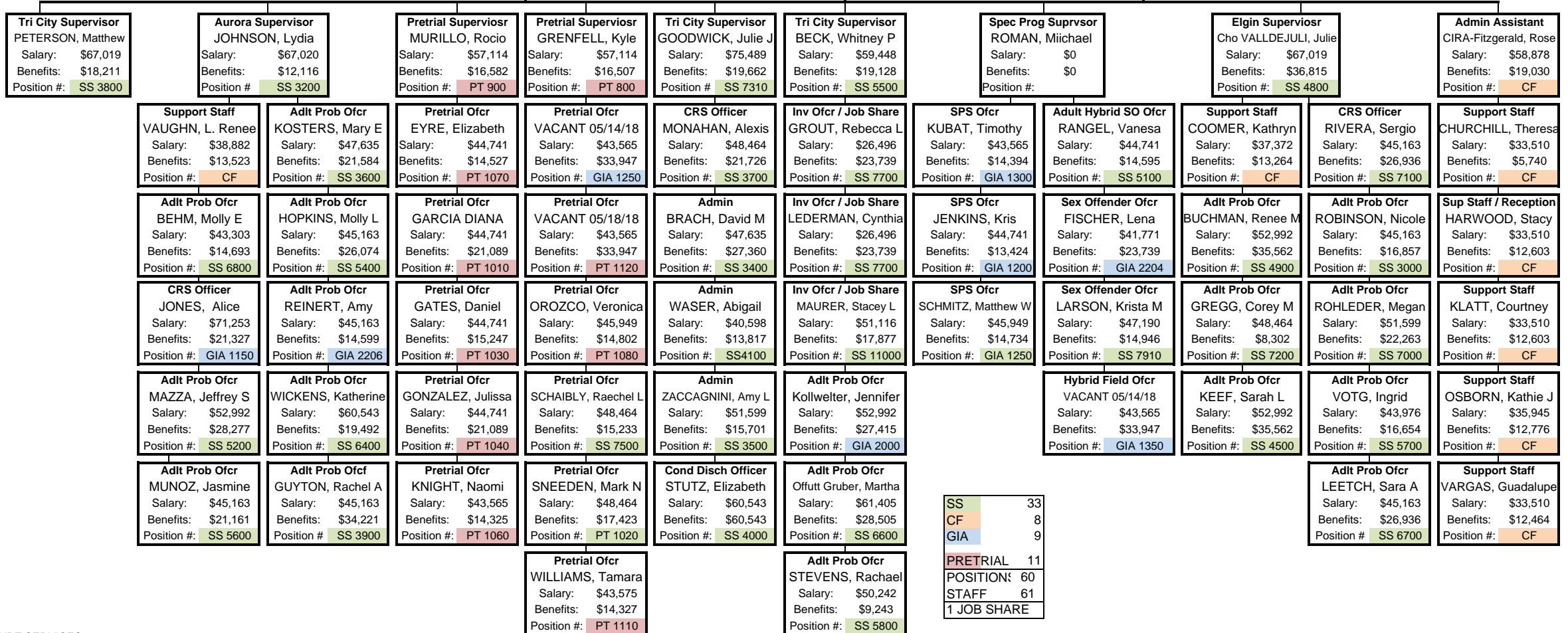
EXECUTIVE DIRECTOR
AUST, LISA J

DIRECTOR
JEFKO, JEFFERY R

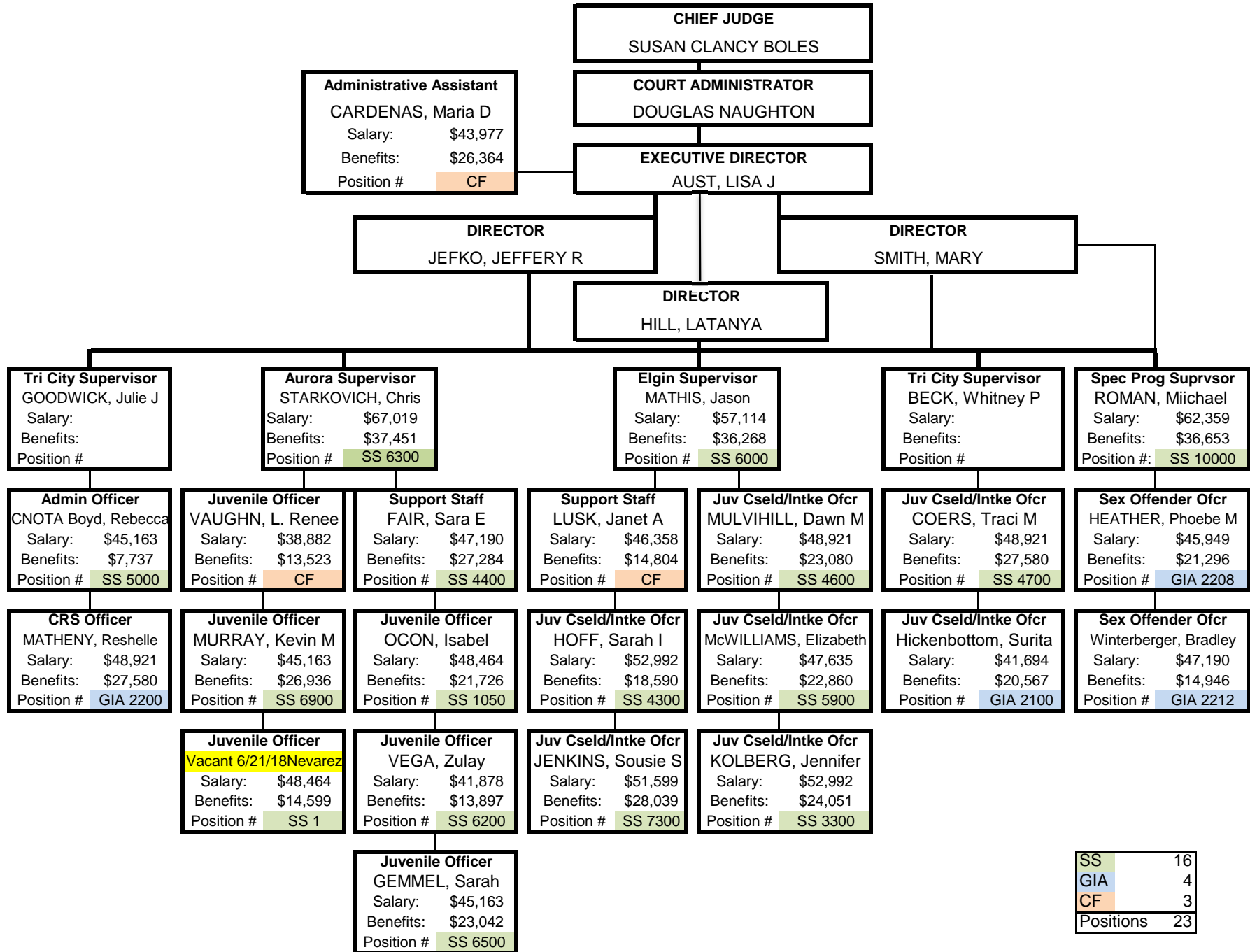
DIRECTOR
SMITH, MARY

DIRECTOR
HILL, LATANYA

PROGRAM MANAGER
OSBORN, Joshua M



JUVENILE COURT SERVICES



SS	16
GIA	4
CF	3
Positions	23

TREATMENT ALTERNATIVE COURT

CHIEF JUDGE
SUSAN CLANCY BOLES

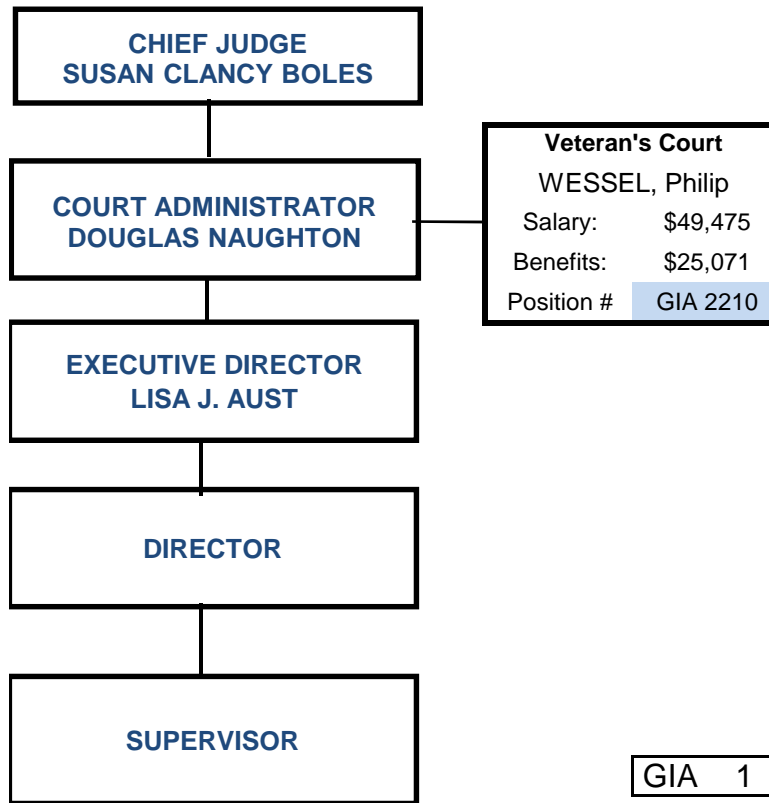
COURT ADMINISTRATOR
DOUGLAS NAUGHTON

EXECUTIVE DIRECTOR
LISA J. AUST

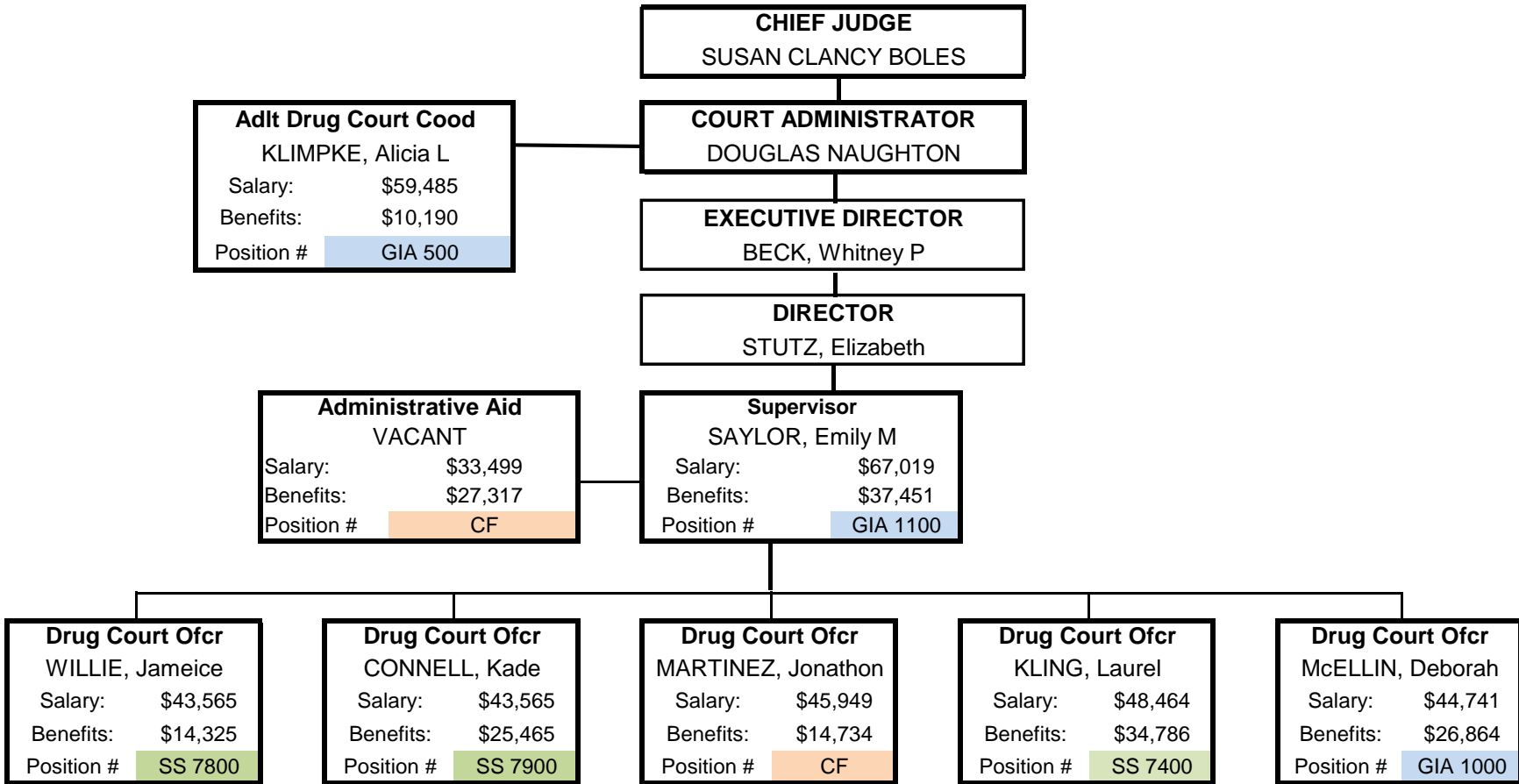
MENTAL HEALTH
LIDDICOATT, Lindsey
Salary: \$56,914
Benefits: \$18,694
Position # SS 7920

SS 1

VETERANS COURT



DRUG REHABILITATION COURT



SS	3
GIA	3
CF	2
Positions	8