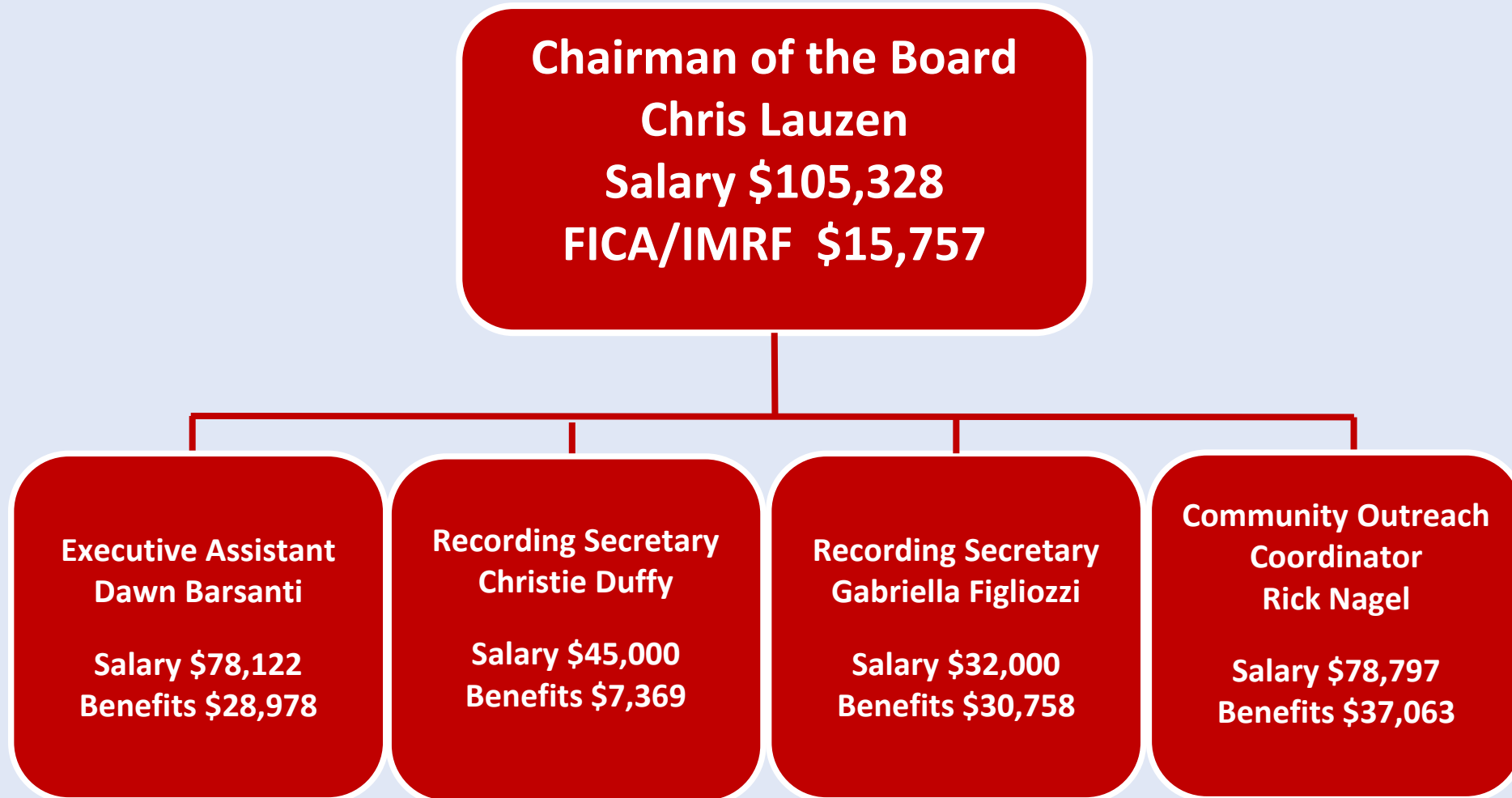


Kane County Board Organizational Chart



Kane County Board Members By District

<p>Board Member District 1 Myrna Molina * Salary \$25,000 Benefits \$21,727 (FICA/IMRF/Insur)</p>	<p>Board Member District 2 Theresa Barreiro Salary \$25,000 Benefits \$3,741 (FICA/IMRF)</p>	<p>Board Member District 3 TBD Salary \$25,000 Benefits \$20,744 (FICA/Insur)</p>	<p>Board Member District 4 Angela C. Thomas Salary \$25,000 Benefits \$15,084 (FICA/Insur)</p>	<p>Board Member District 5 Bill Lenert * Salary \$25,000 Benefits \$21,727 (FICA/IMRF/Insur)</p>	<p>Board Member District 6 Ron Ford Salary \$25,000 Benefits \$20,744 (FICA/Insur)</p>
<p>Board Member District 7 Monica Silva * Salary \$25,000 Benefits \$13,077 (FICA/IMRF/Insur)</p>	<p>Board Member District 8 Barbara Hernandez Salary \$25,000 Benefits \$8,644 (FICA/Insur)</p>	<p>Board Member District 9 TBD Salary \$25,000 Benefits \$20,744 (FICA/Insur)</p>	<p>Board Member District 10 Susan Starrett Salary \$25,000 Benefits \$21,727 (FICA/IMRF/Insur)</p>	<p>Board Member District 11 John Martin * Salary \$25,000 Benefits \$1,913 (FICA)</p>	<p>Board Member District 12 John Hoscheit Salary \$25,000 Benefits \$3,741 (FICA/IMRF)</p>
<p>Board Member District 13 TBD Salary \$25,000 Benefits \$20,744 (FICA/Insur)</p>	<p>Board Member District 14 Mark Davoust Salary \$25,000 Benefits \$21,727 (FICA/IMRF/Insur)</p>	<p>Board Member District 15 Barbara Wojnicki * Salary \$25,000 Benefits \$12,685 (FICA/IMRF/Insur)</p>	<p>Board Member District 16 Michael Kenyon Salary \$25,000 Benefits \$21,727 (FICA/IMRF/Insur)</p>	<p>Board Member District 17 Deborah Allan * Salary \$25,000 Benefits \$16,912 (FICA/IMRF/Insur)</p>	<p>Board Member District 18 Drew Frasz Salary \$25,000 Benefits \$21,727 (FICA/IMRF/Insur)</p>
<p>Board Member District 19 Kurt Kojzarek * Salary \$25,000 Benefits \$22,125 (FICA/IMRF/Insur)</p>	<p>Board Member District 20 Penny Wegman Salary \$25,000 Benefits \$10,857 (FICA/Insur)</p>	<p>Board Member District 21 TBD Salary \$25,000 Benefits \$20,744 (FICA/Insur)</p>	<p>Board Member District 22 Douglas Schefflow Salary \$25,000 Benefits \$20,744 (FICA/Insur)</p>	<p>Board Member District 23 TBD Salary \$25,000 Benefits \$20,744 (FICA/Insur)</p>	<p>Board Member District 24 Jarett Sanchez Salary \$25,000 Benefits \$20,744 (FICA/Insur)</p>

* Board Member up for re-election