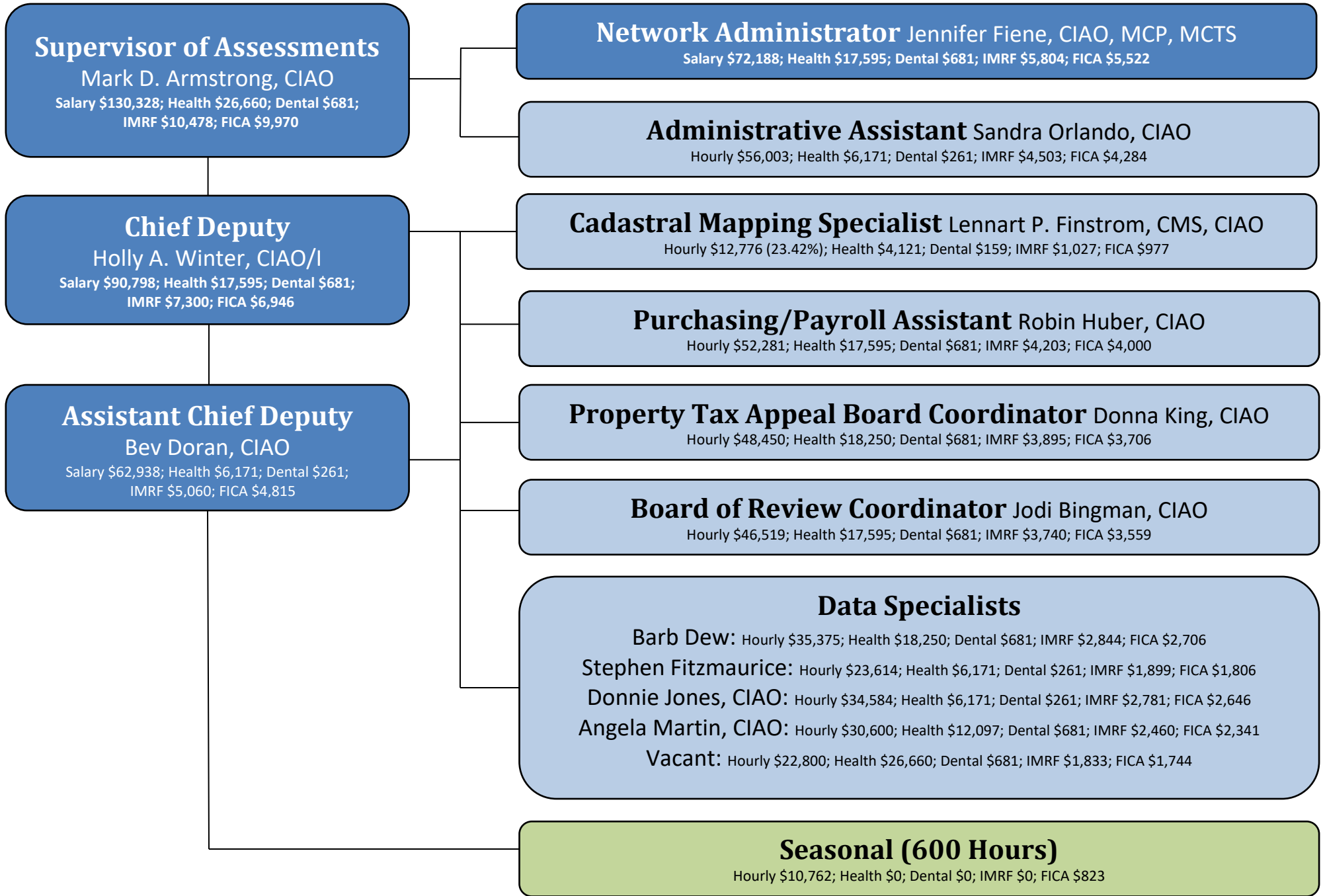


# KANE COUNTY ASSESSMENT OFFICE

## SALARY AND BENEFIT ORGANIZATIONAL CHART for 2020



**Supervisor of Assessments**  
Mark D. Armstrong, CIAO  
Salary \$130,328; Health \$26,660; Dental \$681;  
IMRF \$10,478; FICA \$9,970

**Network Administrator** Jennifer Fiene, CIAO, MCP, MCTS  
Salary \$72,188; Health \$17,595; Dental \$681; IMRF \$5,804; FICA \$5,522

**Administrative Assistant** Sandra Orlando, CIAO  
Hourly \$56,003; Health \$6,171; Dental \$261; IMRF \$4,503; FICA \$4,284

**Chief Deputy**  
Holly A. Winter, CIAO/I  
Salary \$90,798; Health \$17,595; Dental \$681;  
IMRF \$7,300; FICA \$6,946

**Cadastral Mapping Specialist** Lennart P. Finstrom, CMS, CIAO  
Hourly \$12,776 (23.42%); Health \$4,121; Dental \$159; IMRF \$1,027; FICA \$977

**Purchasing/Payroll Assistant** Robin Huber, CIAO  
Hourly \$52,281; Health \$17,595; Dental \$681; IMRF \$4,203; FICA \$4,000

**Assistant Chief Deputy**  
Bev Doran, CIAO  
Salary \$62,938; Health \$6,171; Dental \$261;  
IMRF \$5,060; FICA \$4,815

**Property Tax Appeal Board Coordinator** Donna King, CIAO  
Hourly \$48,450; Health \$18,250; Dental \$681; IMRF \$3,895; FICA \$3,706

**Board of Review Coordinator** Jodi Bingman, CIAO  
Hourly \$46,519; Health \$17,595; Dental \$681; IMRF \$3,740; FICA \$3,559

**Data Specialists**  
Barb Dew: Hourly \$35,375; Health \$18,250; Dental \$681; IMRF \$2,844; FICA \$2,706  
Stephen Fitzmaurice: Hourly \$23,614; Health \$6,171; Dental \$261; IMRF \$1,899; FICA \$1,806  
Donnie Jones, CIAO: Hourly \$34,584; Health \$6,171; Dental \$261; IMRF \$2,781; FICA \$2,646  
Angela Martin, CIAO: Hourly \$30,600; Health \$12,097; Dental \$681; IMRF \$2,460; FICA \$2,341  
Vacant: Hourly \$22,800; Health \$26,660; Dental \$681; IMRF \$1,833; FICA \$1,744

**Seasonal (600 Hours)**  
Hourly \$10,762; Health \$0; Dental \$0; IMRF \$0; FICA \$823