

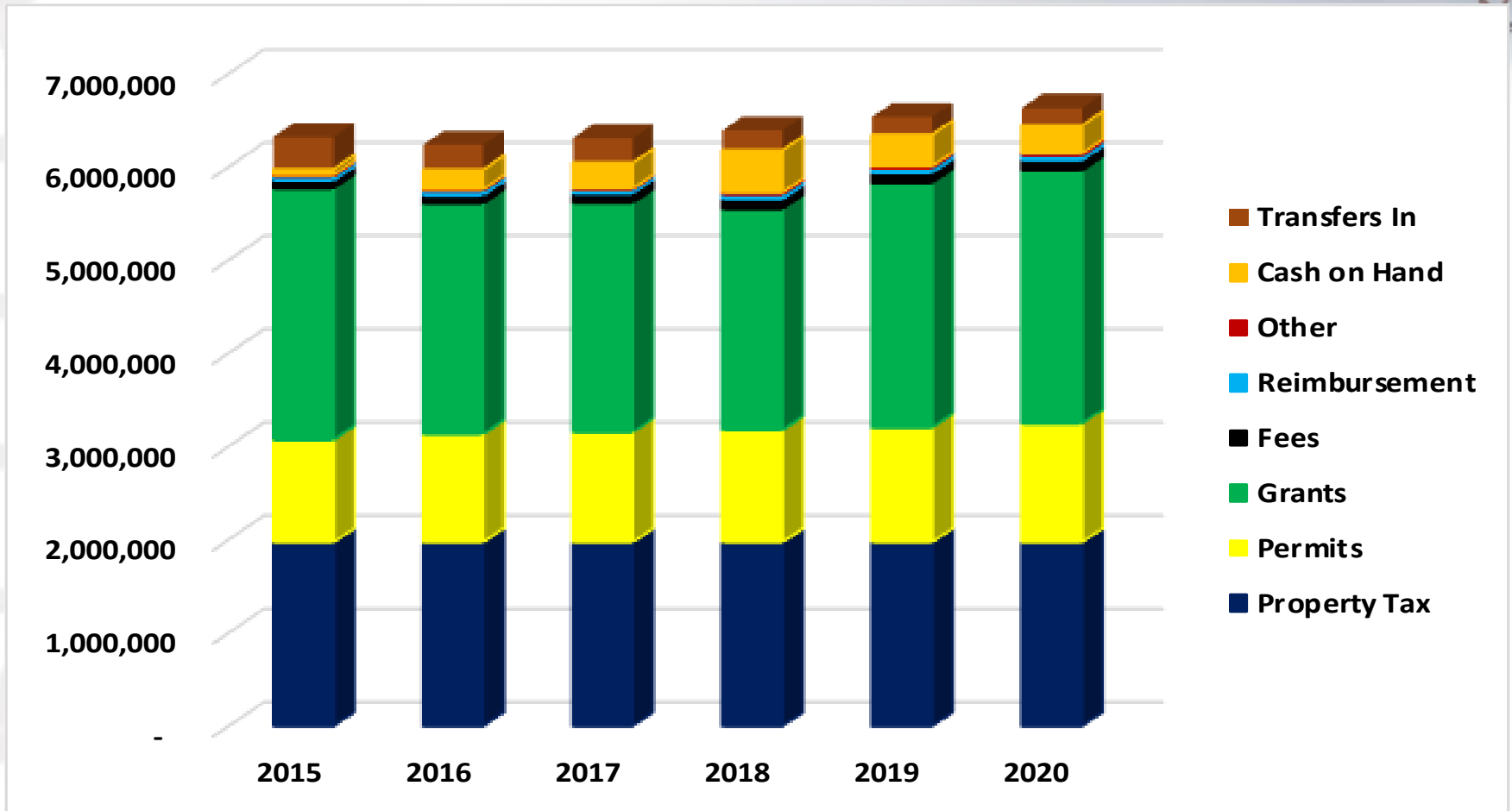
# Health Department Committee of the Whole FY2020 Budget Proposal

Barbara Jeffers, Executive Director  
June 25, 2019

Prepared by: Kinnell J. Snowden

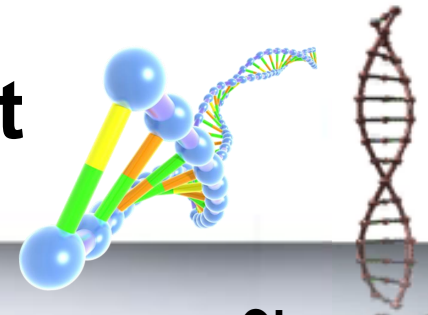


# Kane County Health Department Budget Revenue Sources



KCHD continues to seek mission focused grants to support the operation. Grant revenue is expected to increase in FY2020. The permit revenue increased by the CPI. The property tax as a base remains level. The impact of both the federal uniform grant guidelines and the state's grant accountability and transparency act continues to slow the execution and payment of the grant awards.

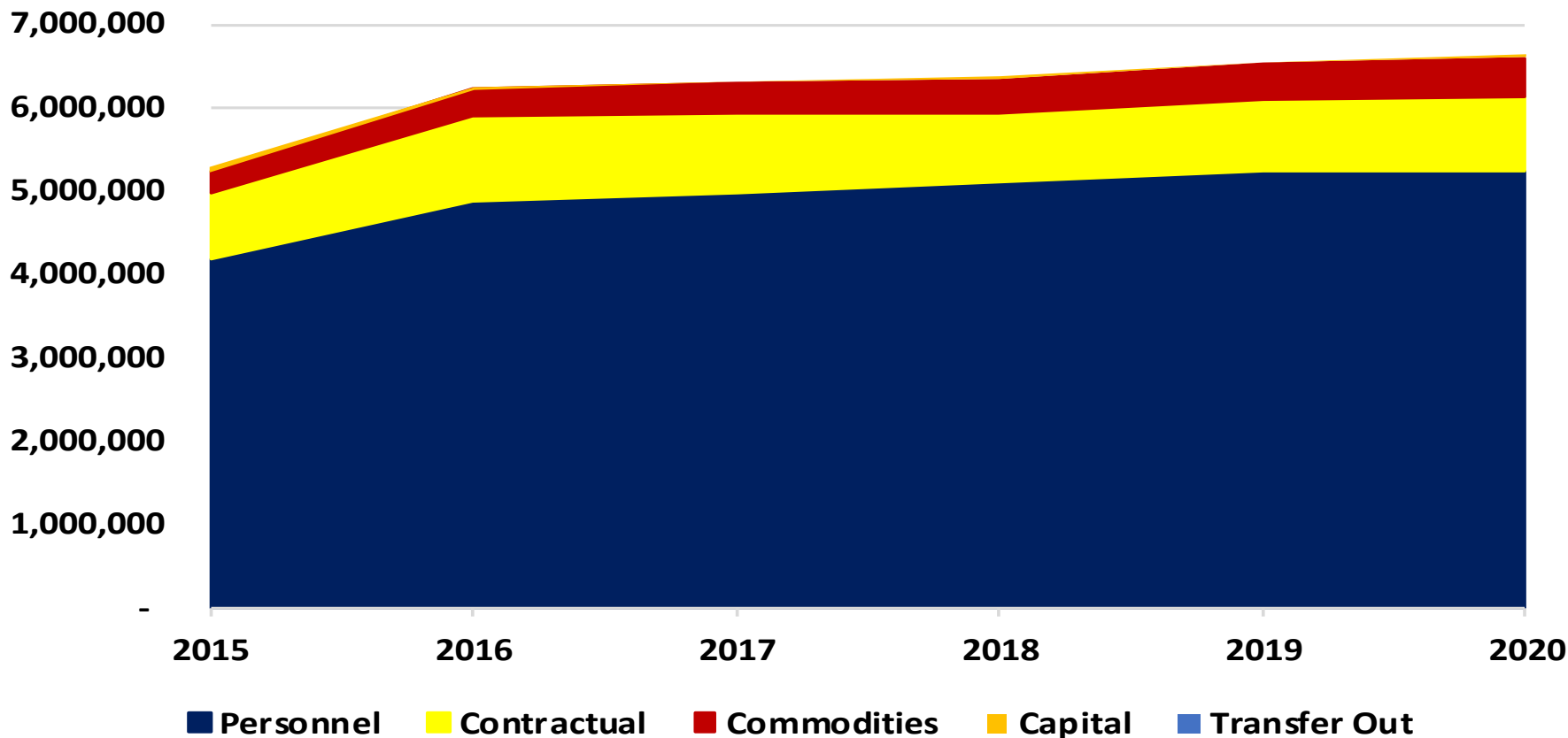
# Kane County Health Department Budget Revenue Summary



Category	2019		2020		Change
	\$	%	\$	%	\$
Property Tax	1,972,455	30.2%	1,972,455	29.7%	-
Permits	1,231,500	18.8%	1,275,978	19.2%	44,478
Grants	2,625,740	40.2%	2,712,467	40.9%	86,727
Fees	107,770	1.6%	110,840	1.7%	3,070
Reimbursement	51,100	0.8%	50,585	0.8%	(515)
Other	20,178	0.3%	23,000	0.3%	2,822
Cash on Hand	339,068	5.2%	300,658	4.5%	(38,410)
Transfers In (Grants)	188,145	2.9%	188,145	2.8%	-
<b>Total</b>	<b>6,535,956</b>	<b>100.0%</b>	<b>6,634,128</b>	<b>100.0%</b>	<b>98,172</b>

Permits: the main component of the net change is a 1.5% CPI increase of food permits. Grants: the net increase is driven by new grants, grant elimination and several experienced increases & decreases. Fees: net change relates to year over year fluctuation in volume. Cash on Hand: the net change relates to the changes in grant funding. Transfer In: the net change for riverboat funds is flat.

# Kane County Health Department Expenditures by Category



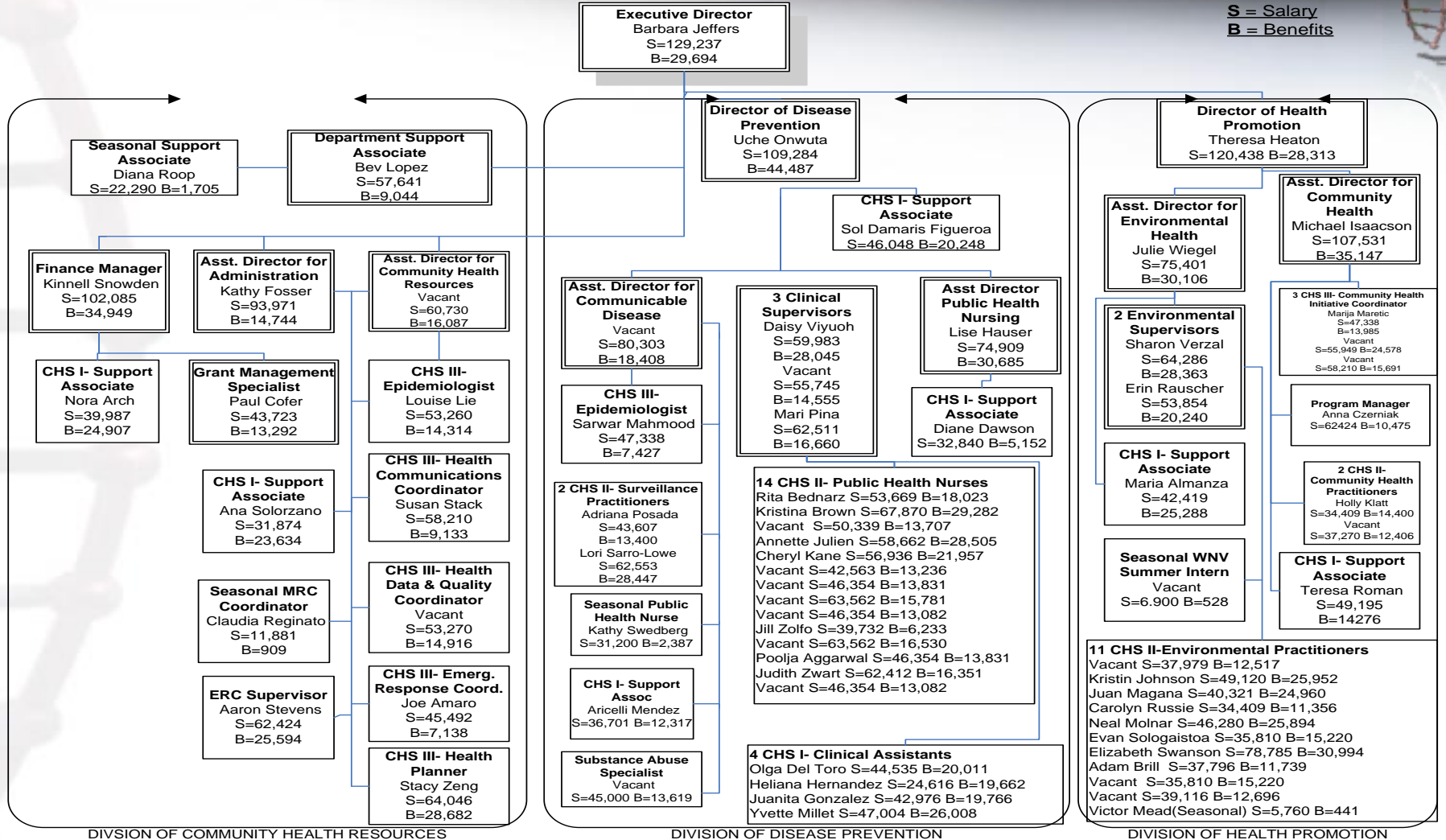
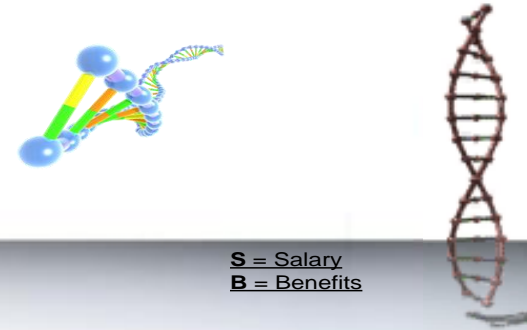
Personnel remains the expense category. The KCHD approach to a shared commitment of a healthy community continues to assist the department in obtaining alternative resources to fund the prevention, education and control programs.

# Kane County Health Department



	2019	2020	Change		Explanation
	\$	\$	\$	%	
<b>Total Revenue</b>	<b>6,535,956</b>	<b>6,634,128</b>	<b>98,172</b>	<b>1.50%</b>	Note: 16 of the 19 budgeted grants awards changed, which resulted in an allocation change to the budgeted expense categories.
<b>Personnel Expense</b>					
Headcount	73	73	-	0.00%	No Change
Union Wages	2,310,207	2,488,851	(178,644)	-7.73%	Net Change is a result of staff turnover, new grants, new CBA and the payroll accrual.
Non-Union Salary & Wages	1,430,119	1,440,915	(10,796)	-0.75%	The net change is due to the payroll accrual re-allocation of responsibilities to exempt staff to reduce and/or eliminate overtime.
Benefits	1,491,725	1,315,459	176,266	11.82%	The positive net change is a result of the staff turnover offset by the IMRF increase.
<b>Total Payroll Expense</b>	<b>5,232,051</b>	<b>5,245,225</b>	<b>(13,174)</b>	<b>-0.25%</b>	
<b>Non-Payroll Expense</b>					
Contractual	867,587	885,977	(18,390)	-2.12%	The net change is a result of the re-allocation of resources based on the grant and program funding requirements.
Commodities	436,318	464,926	(28,608)	-6.56%	The net change is a result of the re-allocation of resources based on the grant and program funding requirements.
Capital	-	38,000	(38,000)	-100.00%	Scheduled vehicle replacement
<b>Total Non-Payroll Expense</b>	<b>1,303,905</b>	<b>1,388,903</b>	<b>(84,998)</b>	<b>-6.52%</b>	
<b>Total Expense</b>	<b>6,535,956</b>	<b>6,634,128</b>	<b>(98,172)</b>	<b>-1.50%</b>	
<b>Net Revenue over Expense</b>	<b>(0)</b>	<b>0</b>	<b>0</b>	<b>0.00%</b>	<b>Balanced Budget</b>

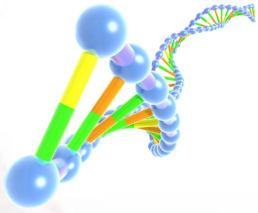
# Kane County Health Department Budget Personnel Organization Chart



DIVISION OF COMMUNITY HEALTH RESOURCES

DIVISION OF DISEASE PREVENTION

DIVISION OF HEALTH PROMOTION



# The Recap



- ✓ **The Health Department's FY2020 Proposed Budget is Balanced.**
- ✓ **The staff headcount is unchanged. The department's community partnerships help share the cost of public health programs.**
- ✓ **The Ten Essential Services of Public Health is supported by the FY2020 budget. Resource allocation management is vital to funding key programs and control cost.**
- ✓ **The KCHD continues to research and apply for new grants to support the community health programs.**
- ✓ **The FY2020 budget supports continuous improvement to maintain a state of readiness, resource control, risk management and sustainability.**

