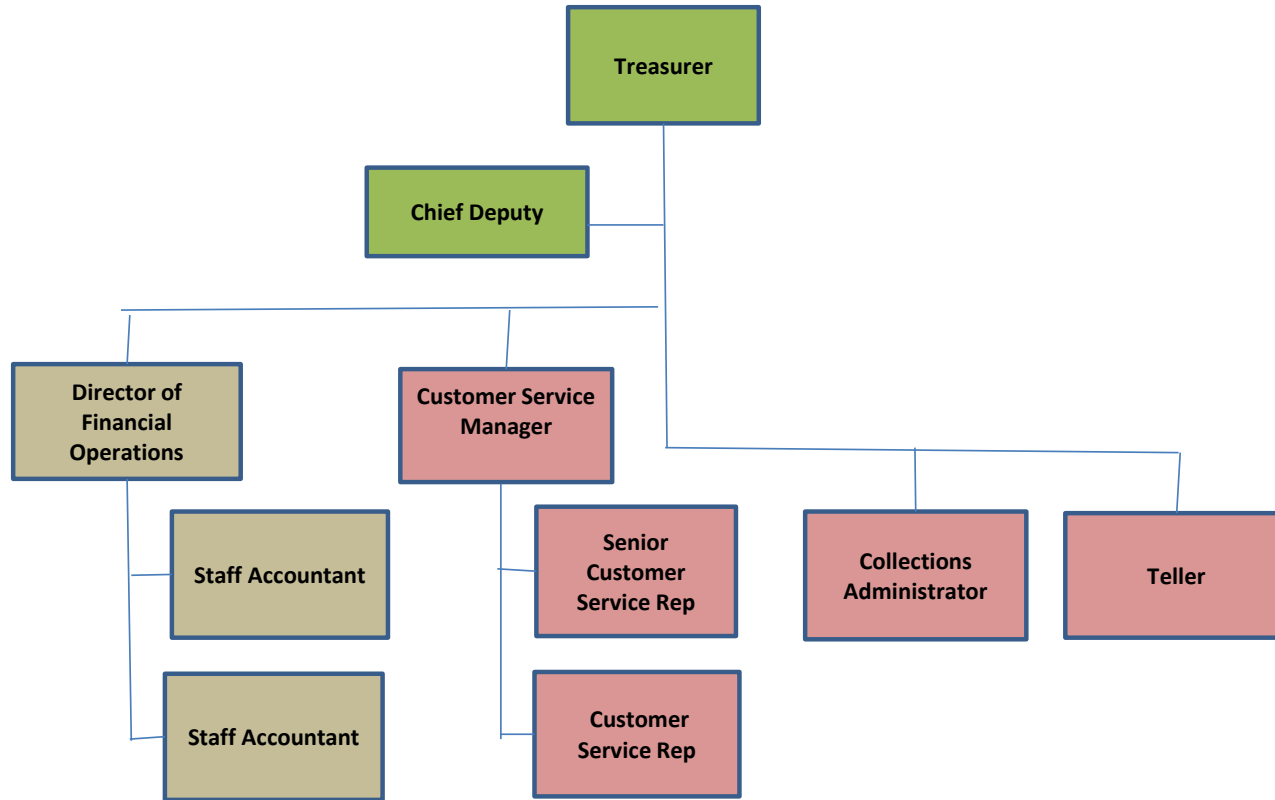


Treasurer's Office Organization Chart with Salary and Benefits FY 2020 Budget



Classification	Title	Salary	Health *	Dental *	IMRF *	FICA *	Total Salary Plus Benefits
Management	Treasurer	100,000	17,595	681	8,040	7,650	133,966
Management	Chief Deputy	89,000	6,171	261	7,156	6,809	109,397
Treasurer Staff	Director of Financial Operations	89,000	12,097	681	7,156	6,809	115,743
Treasurer Staff	Staff Accountant	50,000	17,595	681	4,020	3,825	76,121
Treasurer Staff	Staff Accountant	50,000	26,660	681	4,020	3,825	85,186
Collector Staff	Collections Administrator	50,000	6,171	261	4,020	3,825	64,277
Collector Staff	Customer Service Manager	53,000	12,097	681	4,261	4,055	74,094
Collector Staff	Senior Customer Service Rep	42,000	6,171	261	3,377	3,213	55,022
Collector Staff	Customer Service Rep	30,000	-	-	2,412	2,295	34,707
Collector Staff	Teller	30,542	6,171	261	2,456	2,336	41,766
TOTALS		583,542	110,728	4,449	46,918	44,642	790,279

Payroll Accrual Adjustment .0055 3,209
 2020 Budget Request 586,751

* Estimate Provided by Finance Department