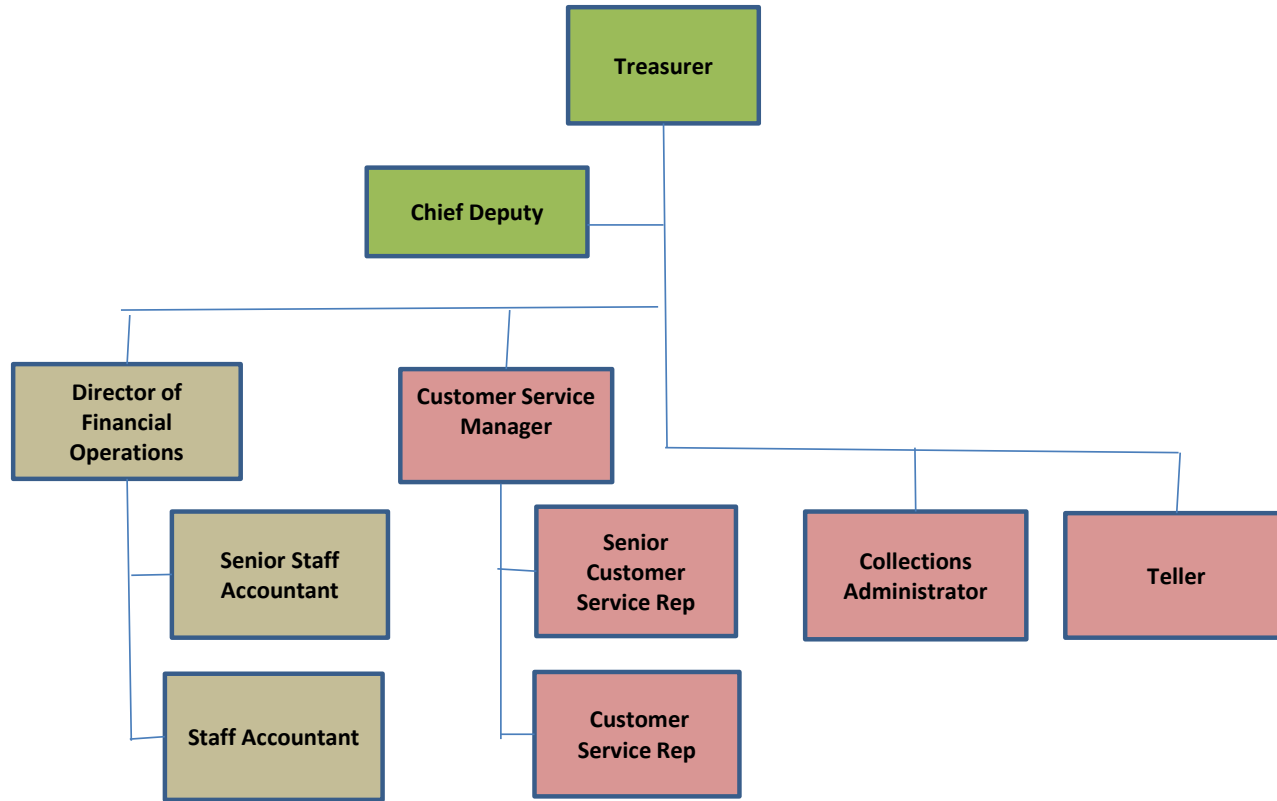


**Treasurer's Office Organization Chart with Salary and Benefits FY 2021 Budget**



Classification	Title	Salary	Health *	Dental *	IMRF *	FICA *	Total Salary Plus Benefits
Management	Treasurer	100,000	16,998	666	8,040	7,650	133,354
Management	Chief Deputy	91,000	6,004	256	7,316	6,962	111,538
Treasurer Staff	Director of Financial Operations	91,000	11,712	666	7,316	6,962	117,656
Treasurer Staff	Senior Staff Accountant	51,000	16,998	666	4,100	3,902	76,666
Treasurer Staff	Staff Accountant	51,000	6,004	256	4,100	3,902	65,262
Collector Staff	Collections Administrator	51,000	6,004	256	4,100	3,902	65,262
Collector Staff	Customer Service Manager	54,000	6,004	256	4,342	4,131	68,733
Collector Staff	Senior Customer Service Rep	43,000	6,004	256	3,457	3,290	56,007
Collector Staff	Customer Service Rep	32,000	-	-	2,573	2,448	37,021
Collector Staff	Teller	29,213	29,041	666	2,349	2,235	63,504
<b>TOTALS</b>		<b>593,213</b>	<b>104,769</b>	<b>3,944</b>	<b>47,693</b>	<b>45,384</b>	<b>795,003</b>

Payroll Accrual Adjustment .0029 1,720  
 2021 Budget Request 594,933

\* Estimate Provided by Finance Department