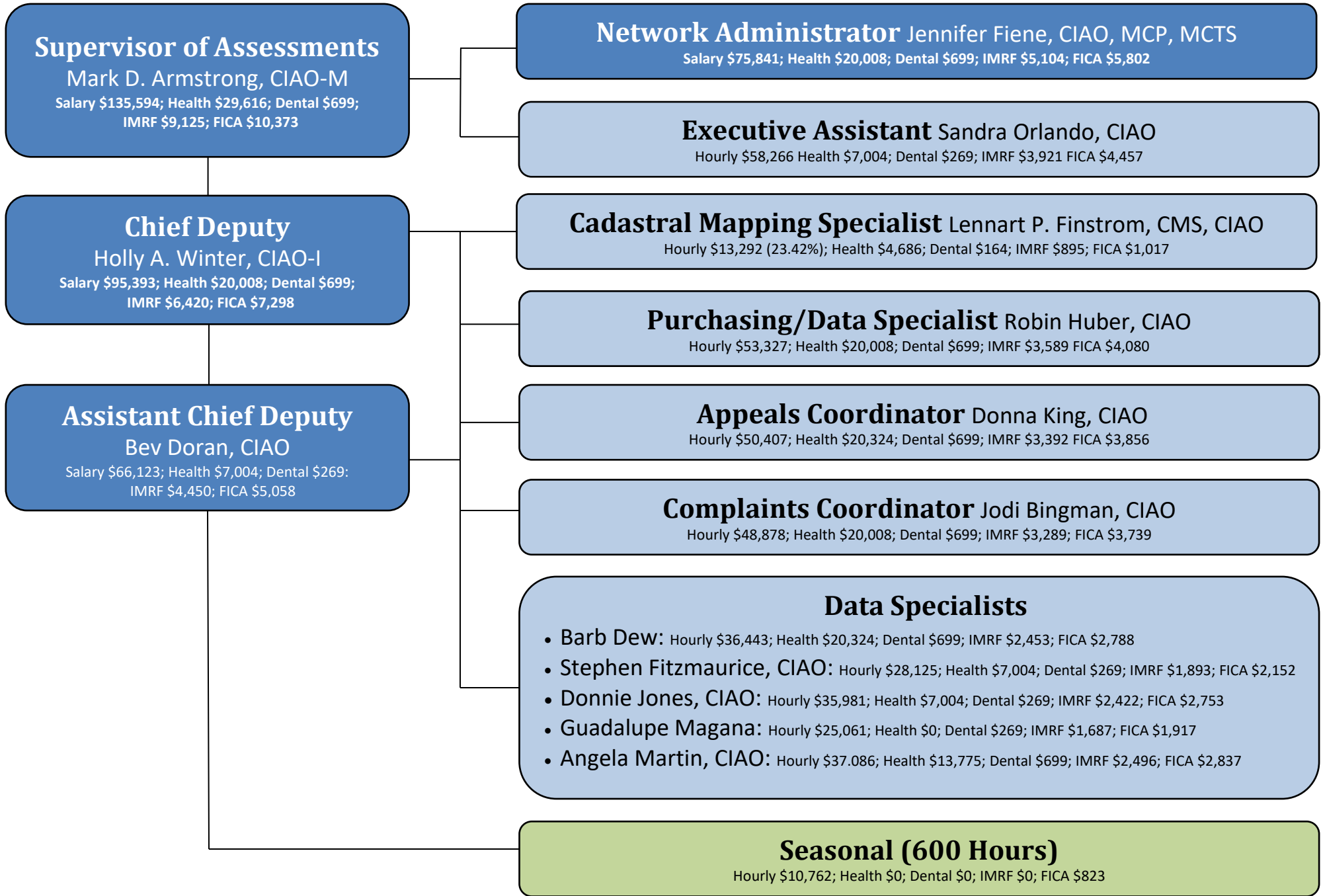


KANE COUNTY ASSESSMENT OFFICE

SALARY AND BENEFIT ORGANIZATIONAL CHART for 2022



Supervisor of Assessments
 Mark D. Armstrong, CIAO-M
 Salary \$135,594; Health \$29,616; Dental \$699;
 IMRF \$9,125; FICA \$10,373

Network Administrator Jennifer Fiene, CIAO, MCP, MCTS
 Salary \$75,841; Health \$20,008; Dental \$699; IMRF \$5,104; FICA \$5,802

Executive Assistant Sandra Orlando, CIAO
 Hourly \$58,266 Health \$7,004; Dental \$269; IMRF \$3,921 FICA \$4,457

Chief Deputy
 Holly A. Winter, CIAO-I
 Salary \$95,393; Health \$20,008; Dental \$699;
 IMRF \$6,420; FICA \$7,298

Cadastral Mapping Specialist Lennart P. Finstrom, CMS, CIAO
 Hourly \$13,292 (23.42%); Health \$4,686; Dental \$164; IMRF \$895; FICA \$1,017

Purchasing/Data Specialist Robin Huber, CIAO
 Hourly \$53,327; Health \$20,008; Dental \$699; IMRF \$3,589 FICA \$4,080

Assistant Chief Deputy
 Bev Doran, CIAO
 Salary \$66,123; Health \$7,004; Dental \$269;
 IMRF \$4,450; FICA \$5,058

Appeals Coordinator Donna King, CIAO
 Hourly \$50,407; Health \$20,324; Dental \$699; IMRF \$3,392 FICA \$3,856

Complaints Coordinator Jodi Bingman, CIAO
 Hourly \$48,878; Health \$20,008; Dental \$699; IMRF \$3,289; FICA \$3,739

- Data Specialists**
- Barb Dew: Hourly \$36,443; Health \$20,324; Dental \$699; IMRF \$2,453; FICA \$2,788
 - Stephen Fitzmaurice, CIAO: Hourly \$28,125; Health \$7,004; Dental \$269; IMRF \$1,893; FICA \$2,152
 - Donnie Jones, CIAO: Hourly \$35,981; Health \$7,004; Dental \$269; IMRF \$2,422; FICA \$2,753
 - Guadalupe Magana: Hourly \$25,061; Health \$0; Dental \$269; IMRF \$1,687; FICA \$1,917
 - Angela Martin, CIAO: Hourly \$37.086; Health \$13,775; Dental \$699; IMRF \$2,496; FICA \$2,837

Seasonal (600 Hours)
 Hourly \$10,762; Health \$0; Dental \$0; IMRF \$0; FICA \$823