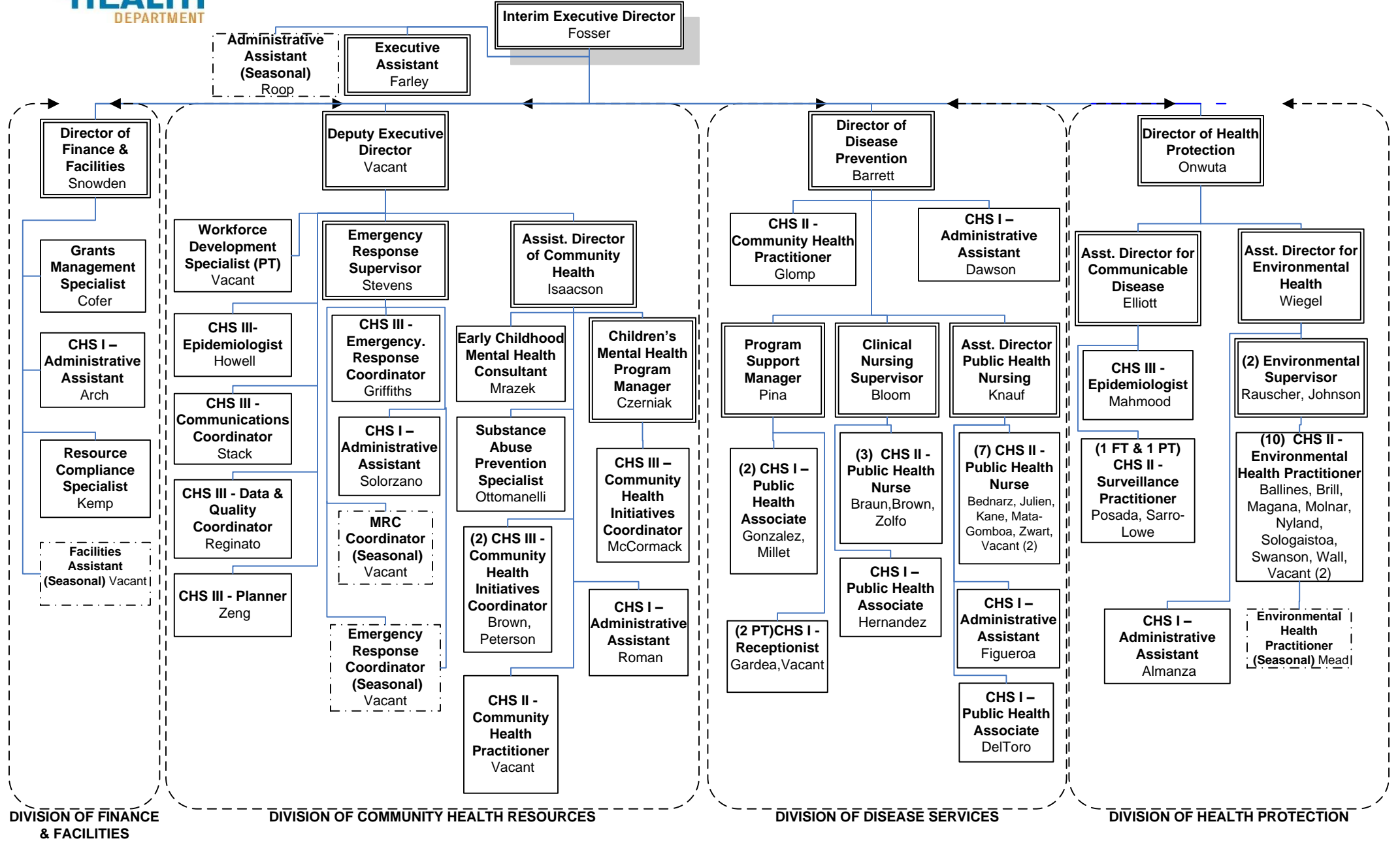




**FY2022 Budget
Organizational Chart**



DIVISION OF FINANCE & FACILITIES

DIVISION OF COMMUNITY HEALTH RESOURCES

DIVISION OF DISEASE SERVICES

DIVISION OF HEALTH PROTECTION

**Kane County Health Department
Staff Position Schedule**

Employee	Position Title	Salary	Fringe
ALMANZA, MARIA E	CHS-I Support Associate	43,267	27,269
ARCH, NORA S	Support Associate	46,875	27,788
BALLINES, CAROLINA	CHS-II Environmental Practitioner	37,235	19,640
BARRETT, LAURA	Director of Disease Prevention	102,000	44,983
BEDNARZ, RITA	CHS-II PH Nurse	54,742	18,564
BLOOM, LISA	Clinical Supervisor	68,146	30,822
BRAUN, KAYLI	CHS - PH Nurse	38,984	5,606
BRILL, ADAM	CHS II Environ Hlth Practitioner	38,552	12,893
BROWN, ANGELA M	CHS-III Health Initiative Coordinator	50,198	17,910
BROWN, KRISTINA J	CHS-II PH Nurse	62,934	30,096
COFER, PAUL	Grants Management Specialist	45,489	13,814
CZERNIAK, ANNA E.	Program Manager - Mental Health	64,946	27,438
DAWSON, DIANE K	CHS I Support Associate	33,497	4,817
DEL TORO, OLGA M	CHS-I Clinical Assistant	50,473	21,944
ELLIOTT, APRYLL M.	Asst Director for CD	74,909	31,795
FARLEY, RACHAEL	CHS-I Support Associate for Dept	51,500	28,113
FIGUEROA, SOL DAMARIS	CHS-I Support Associate	46,978	21,442
FOSSER, KATHLEEN L	Interim Executive Director	135,725	19,517
GARDEA, MARIA	Receptionist	11,960	1,720
GLOMP, KATIE D	CHS-II Comm Health Practitioner	34,409	15,640
GONZALEZ, JUANITA	CHS-I Clinical Assistant	43,835	20,989
GRIFFITHS, CADENCE	Emergency Response Coordinator	45,492	23,942
HERNANDEZ SERRANO, HELIANA	CHS-I Clinical Assistant	25,108	21,011
HOWELL, KELLY G	CHS-III Epidemiologist	57,068	39,057
ISAACSON, MICHAEL A	Asst Director for Community	111,875	36,794
JOHNSON, KRISTIN A	Environmental Supervisor	61,175	29,104
JULIEN, ANNETTE	CHS-II PH Nurse	59,835	19,296
KANE, CHERYL K	CHS-II PH Nurse	58,075	23,037
KEMP, KATRINIA	Resource Compliance Specialist	66,300	5,072
KNAUF, THERESA	Asst Director for PH Nursing	78,540	21,843
MAGANA, JUAN J	CHS-II Environmental Practitioner	41,127	24,193
MAHMOOD, SARWAR S	CHS-III Epidemiologist	48,285	6,944
MARQUES REGINATO, CLAUDIA	CHS-III Health Data & Quality Coordinator	50,198	7,218
MATA-GOMBOA, JENNIFER	CHS-II PH Nurse	39,764	12,914
MCCORMACK, KATHERINE A	Community Health Initiatives Coordinator - Mental Health	57,068	25,607
MEAD, VICTOR L	Seasonal - CHS-II Environmental Practitioner	6,336	911
MILLET, YVETTE M	CHS-I Clinical Assistant	47,944	21,581
MOLNAR, NEAL O	CHS-II Environmental Practitioner	47,206	27,835
MRAZEK, SUSAN	Early Childhood Mental Health Consultant	52,020	15,256
NYLAND, COLLEEN	CHS-II Environmental Practitioner	34,409	2,632
ONWUTA, UCHE	Director Health Protection	113,699	46,665
OTTOMANELLI, SOPHIA	Substance Abuse Specialist	45,900	17,149
PETERSON, KIMBERLY S	CHS-III Health Initiative Coordinator	57,068	29,254
PINA, MARI E	Clinical Supervisor	65,036	17,055
POSADA, ADRIANA	CHS-II Surveillance Specialist	44,479	13,745
RAUSCHER, ERIN M	Environmental Supervisor	62,193	23,018
ROMAN, TERESA	CHS-I Support Associate	50,178	14,565
ROOP, DIANA	Seasonal - Support Associate	28,600	4,113
SARRO LOWE, LORI	CHS-II Surveillance Specialist	63,804	25,928
SNOWDEN, KINNELL J	Finance Director	114,540	37,494
SOLOGAISTOA, EVAN	CHS II Environmental Health	36,526	15,944
SOLORZANO, ANA	CHS-I Support Associate	32,512	25,722
STACK, SUSAN	CHS-III Communications	57,068	28,854
STEVENS, ARRON M	Emergency Response Supervisor	64,946	26,739
SWANSON, ELIZABETH	CHS-II Environmental Practitioner	80,361	32,603
WALL, NICHOLAS	CHS-II Environmental Practitioner	35,097	12,396
WIEGEL, JULIE A	Asst Director Environmental Health	87,077	33,228

**Kane County Health Department
Staff Position Schedule**

Employee	Position Title	Salary	Fringe
ZENG, STACY	CHS-III Health Planner	59,374	29,185
ZOLFO, JILL	CHS-II PH Nurse	40,527	5,827
ZWART, JUDITH M	CHS-II PH Nurse	63,660	16,503
ZZ - VACANT	CHS-II PH Nurse	43,680	13,631
ZZ - VACANT	CHS-II Environmental Practitioner	47,206	14,137
ZZ - VACANT	Emergency Response Coordinator	51,452	14,748
ZZ - VACANT	CHS-II PH Nurse	38,220	12,845
ZZ - VACANT	Seasonal - MRC Coordinator	12,119	1,743
ZZ - VACANT	Seasonal - Support Associate	17,500	2,517
ZZ - VACANT	Executive Director	126,703	25,569
ZZ - VACANT	CHS-II Environmental Practitioner	35,789	12,496
ZZ - VACANT	CHS-II Community Health Practitioner	33,734	9,930
ZZ - VACANT	Workforce Development Specialist	26,000	3,739
ZZ - VACANT	Receptionist	11,960	1,720