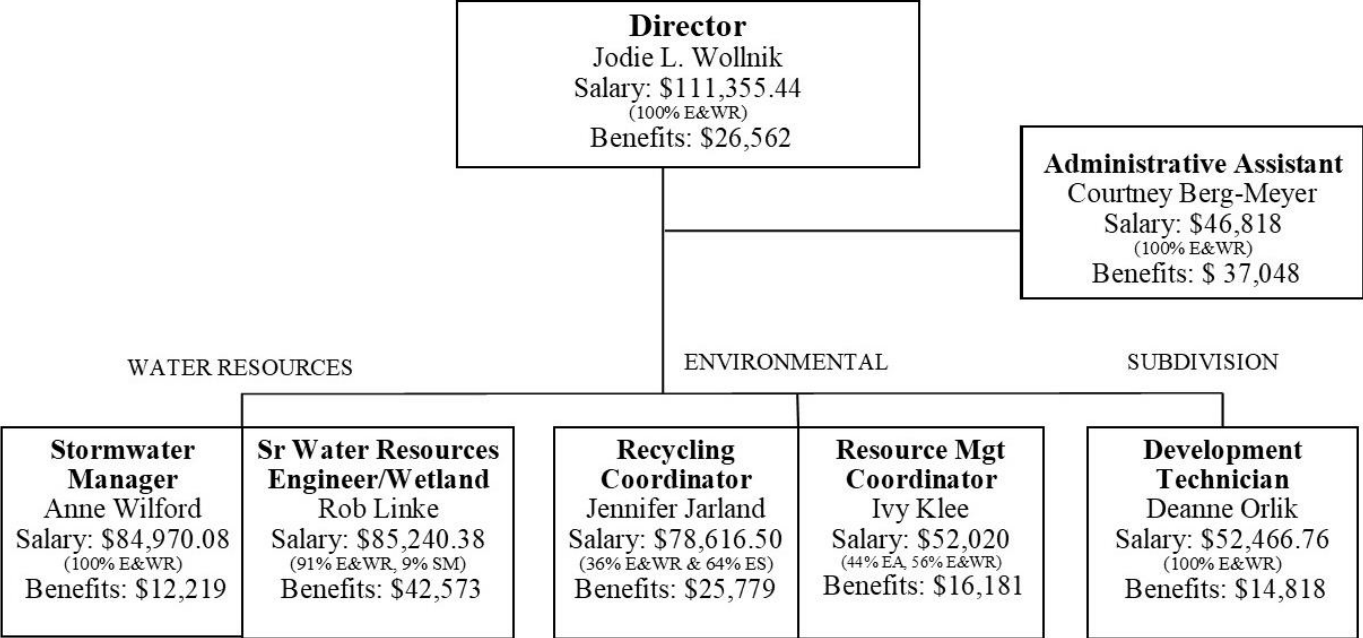


# ENVIRONMENTAL & WATER RESOURCES DEPARTMENT

## 2022 Environmental & Water Resources Organizational Chart

Includes (001) General EWR; (001) Electrical Agg; (650) Enterprise Surcharge; (420) Stormwater Mgmt;



- Staffing reduced by 1 part-time Administrative Assistant - July 2018
- Assistant Director position eliminated - October 2018
- Continue to move salary out of 650 due to reduction in fund balance as a result of Cross Country Course construction