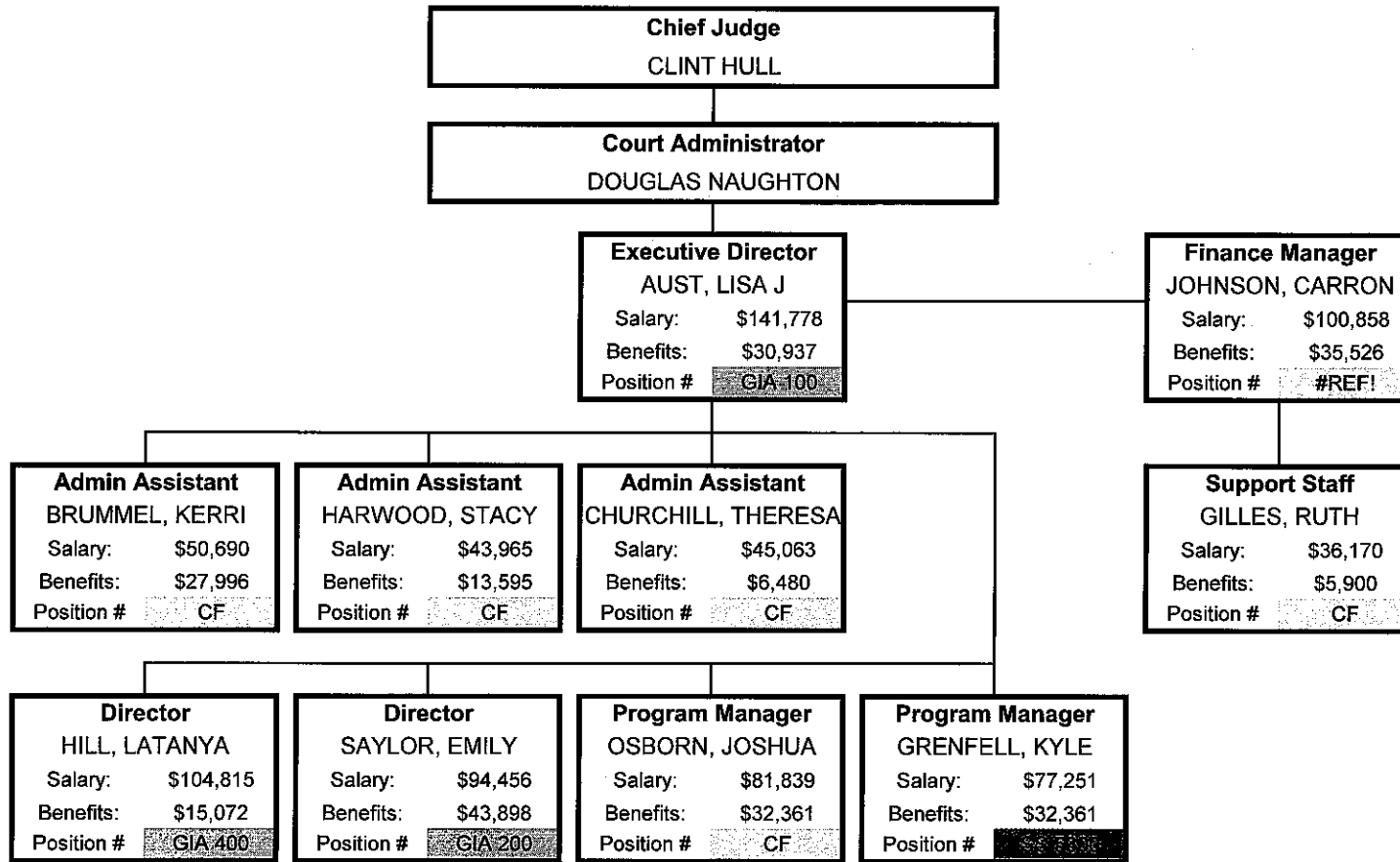


ADMINISTRATION

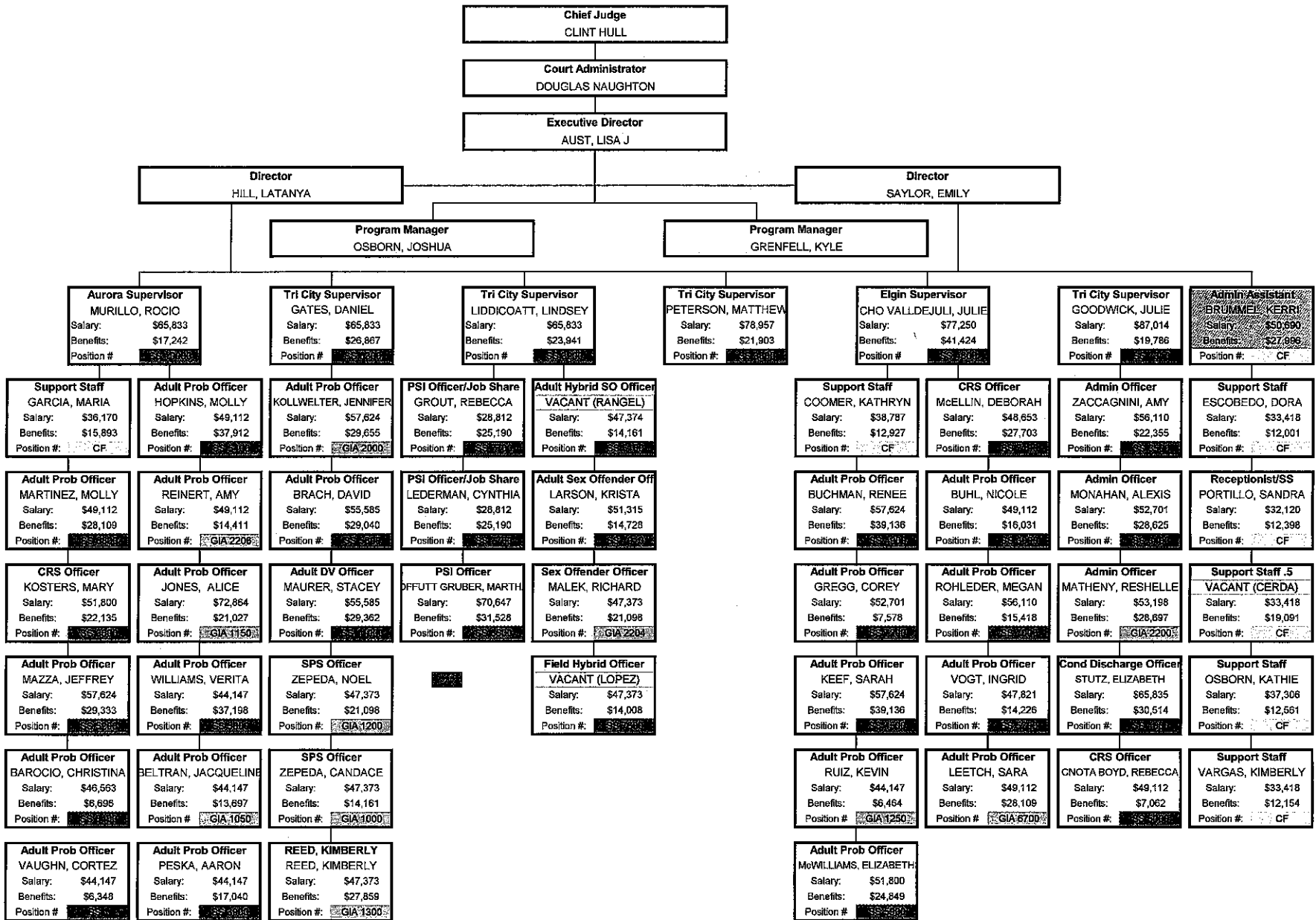


Benefits include Health, Dental, IMRF and FICA/SS.

NOTE: AA Kerri Brummel is also listed on ADULT chart.
Her position is in the COUNT on the ADMIN page.

	1
CF	6
GIA	3
Positions	10
Staff	10
Vacant	0

ADULT COURT SERVICES



Benefits include Health, Dental, IMRF and FICA/SS.

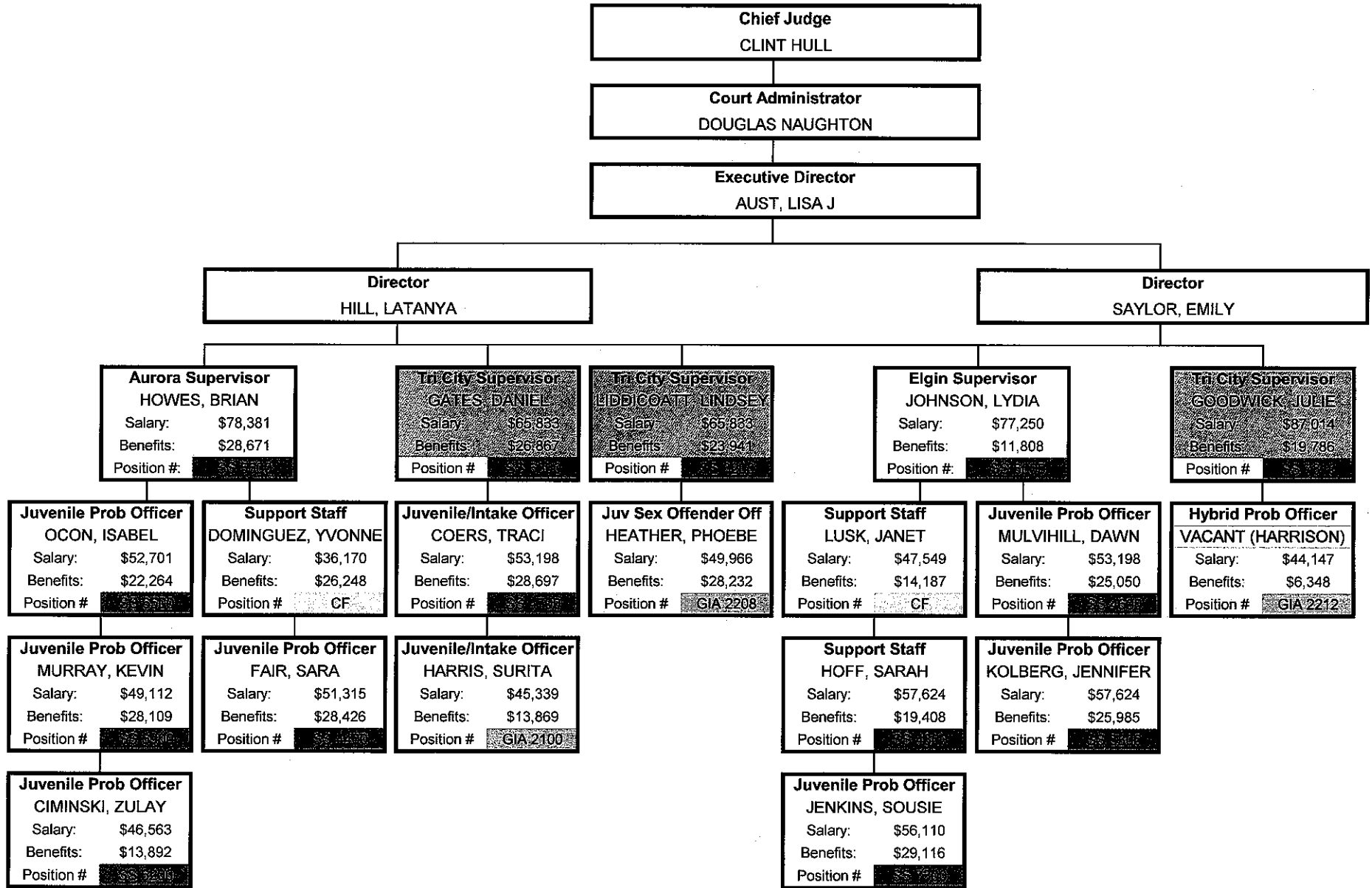
NOTE: AA Kerri Brummel is also listed on ADMIN chart. Her position is in the COUNT on the ADMIN page.

NOTE: SS Vacant is listed as .5 on ADULT and .5 on DRC

***NOTE: PSI Officers GROUT and Lederman are counted as one position. However it counts as two staff.

	33
CF	6.5
GIA	11
Positions	50.5
Staff	49
Vacant	2.5
1 Job Share	

JUVENILE COURT SERVICES

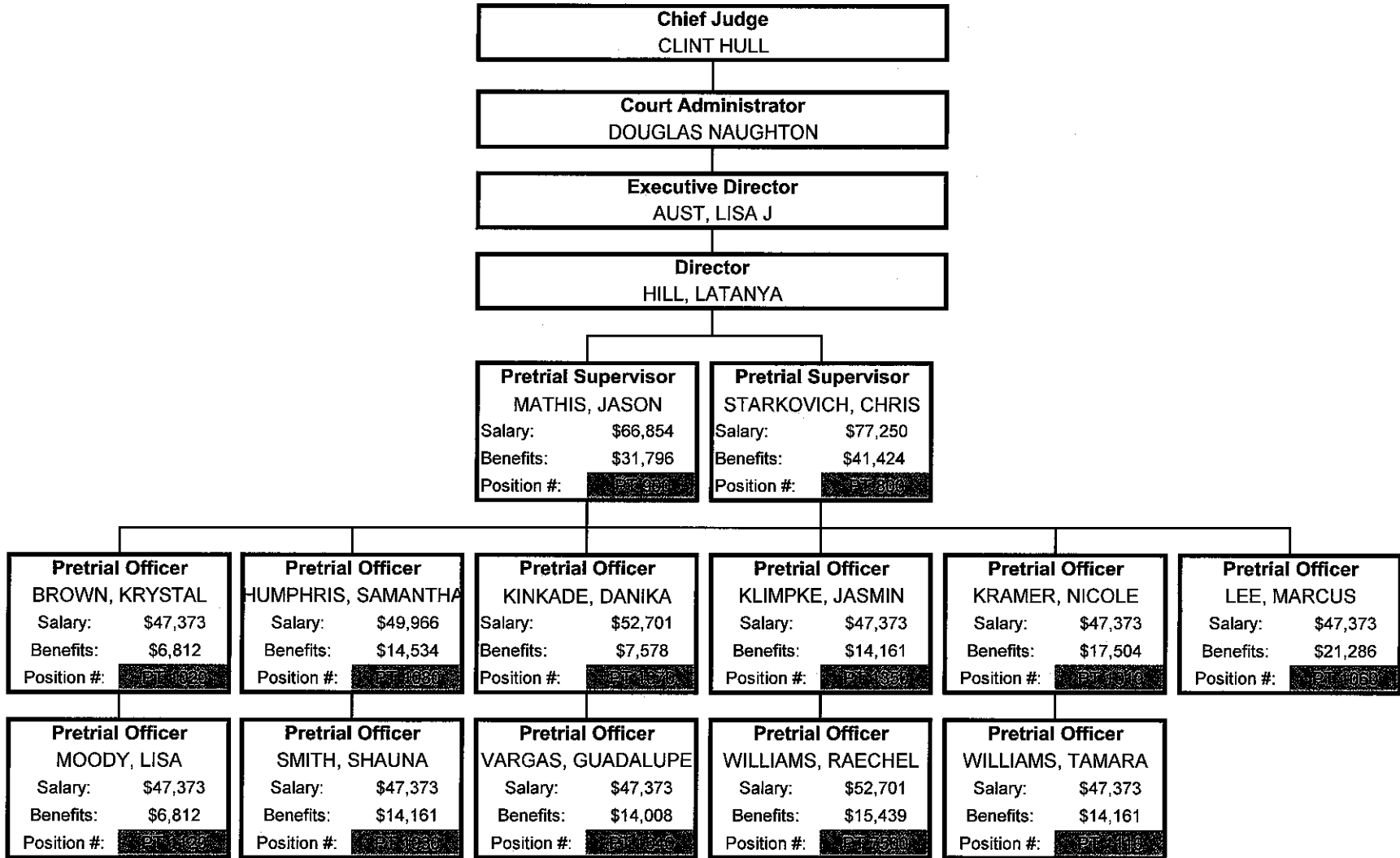


Benefits include Health, Dental, IMRF and FICA/SS.

NOTE: Supervisors Gates, Johnson, Goodwick are also listed on the ADULT chart. Their positions are counted under ADULT.

	11
CF	2
GIA	3
Positions	16
Staff	15
Vacant	1

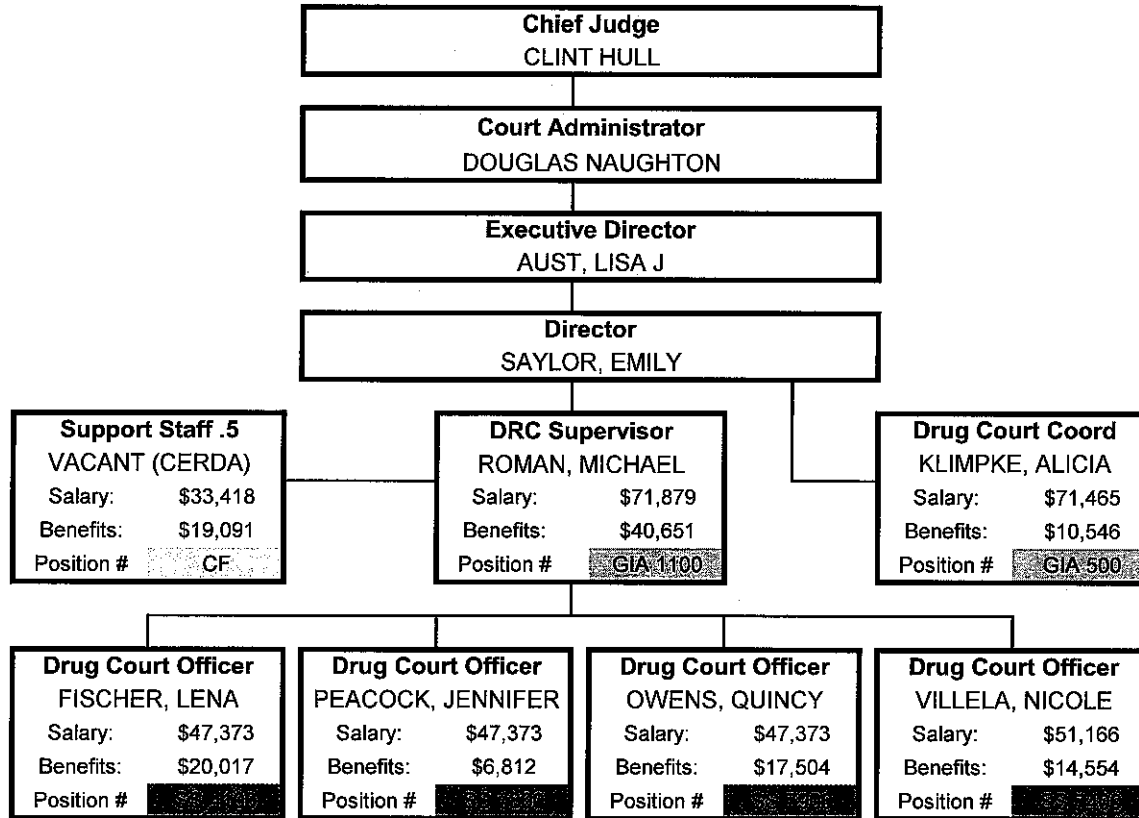
PRETRIAL



Benefits include Health, Dental, IMRF and FICA/SS.

	0
CF	0
GIA	0
PT	13
POSITIONS	13
STAFF	13
VACANT	0

DRUG REHABILITATION COURT

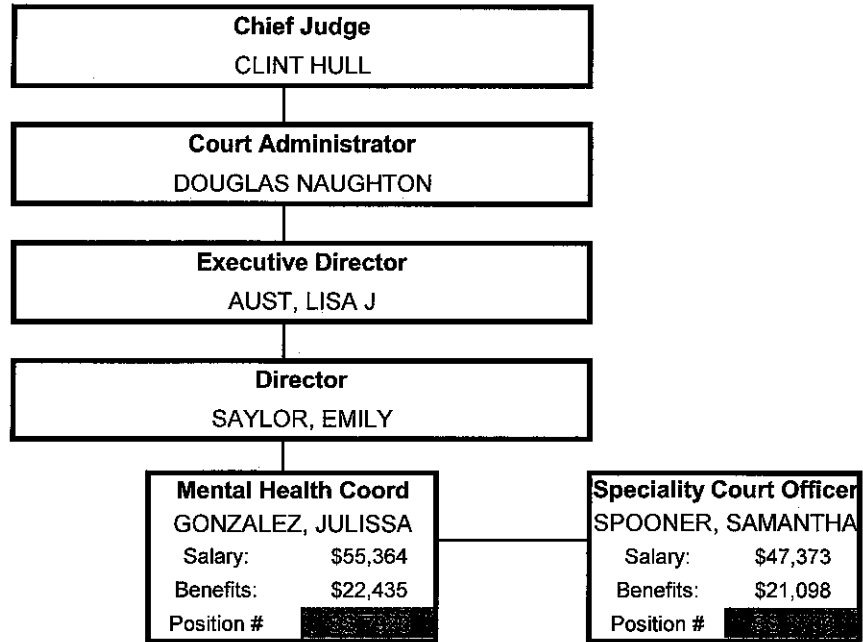


Benefits include Health, Dental, IMRF and FICA/SS.

NOTE: Support Staff is listed as .5 on ADULT and .5 on DRC

	4
CF	2
GIA	0.5
Positions	6.5
Staff	6
Vacant	0.5

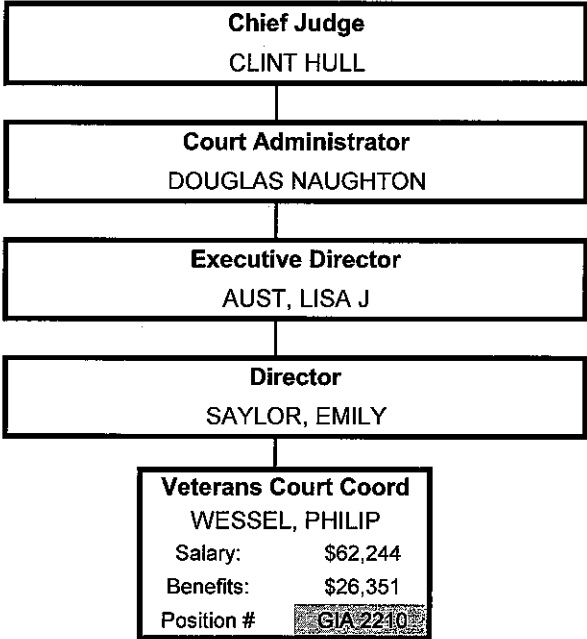
TREATMENT ALTERNATIVE COURT



Benefits include Health, Dental, IMRF and FICA/SS.

[REDACTED]	2
CF	0
GIA	0
Positions	2
Staff	2
Vacant	0

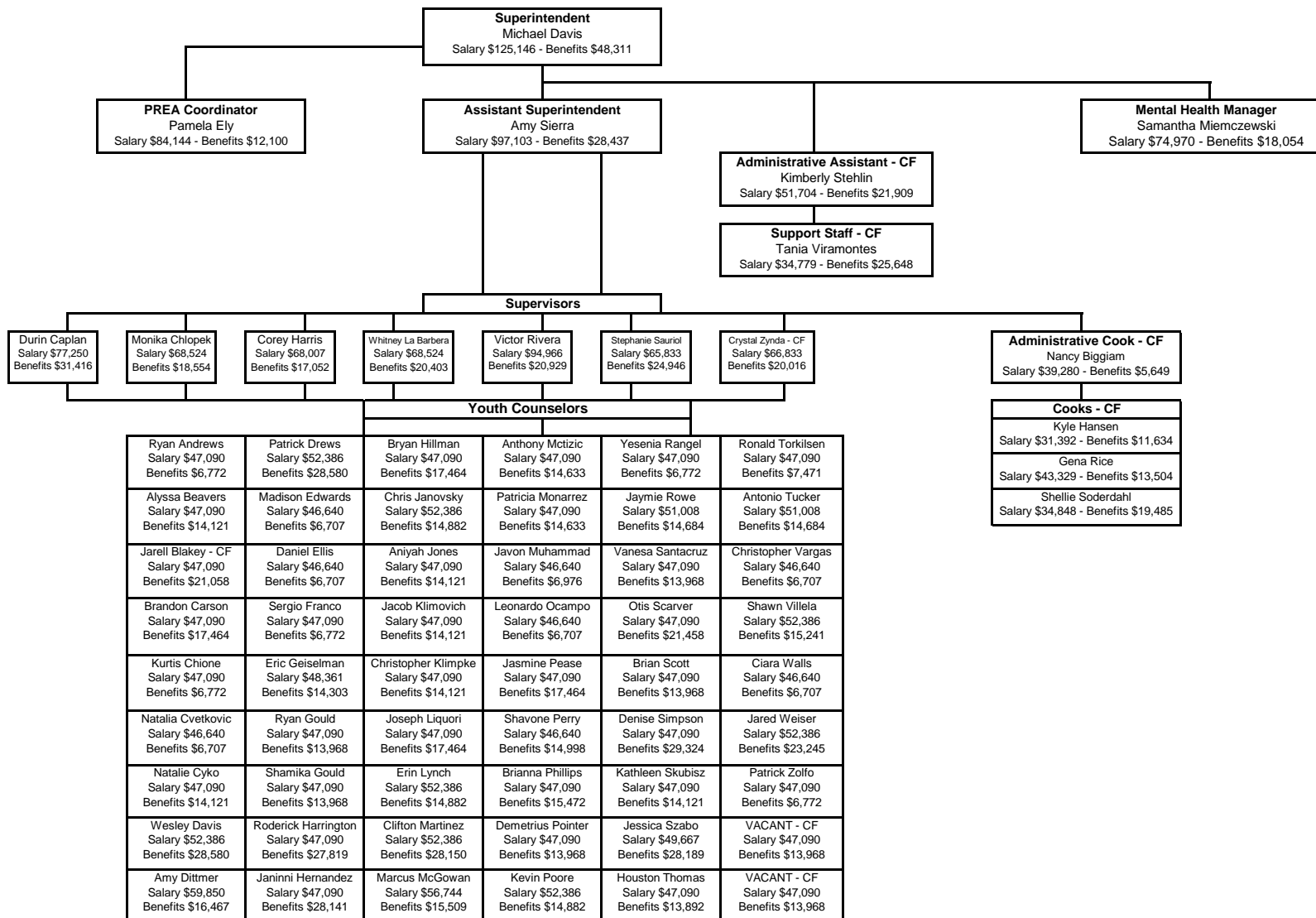
VETERAN'S COURT



Benefits include Health, Dental, IMRF and FICA/SS.

	0
CF	1
GIA	0
Positions	1
Staff	1
Vacant	0

**JUVENILE JUSTICE CENTER
2022**



*CF = County funded

*Benefits include health, dental, IMRF and FICA

Diagnostic Center Organizational Chart FY22

