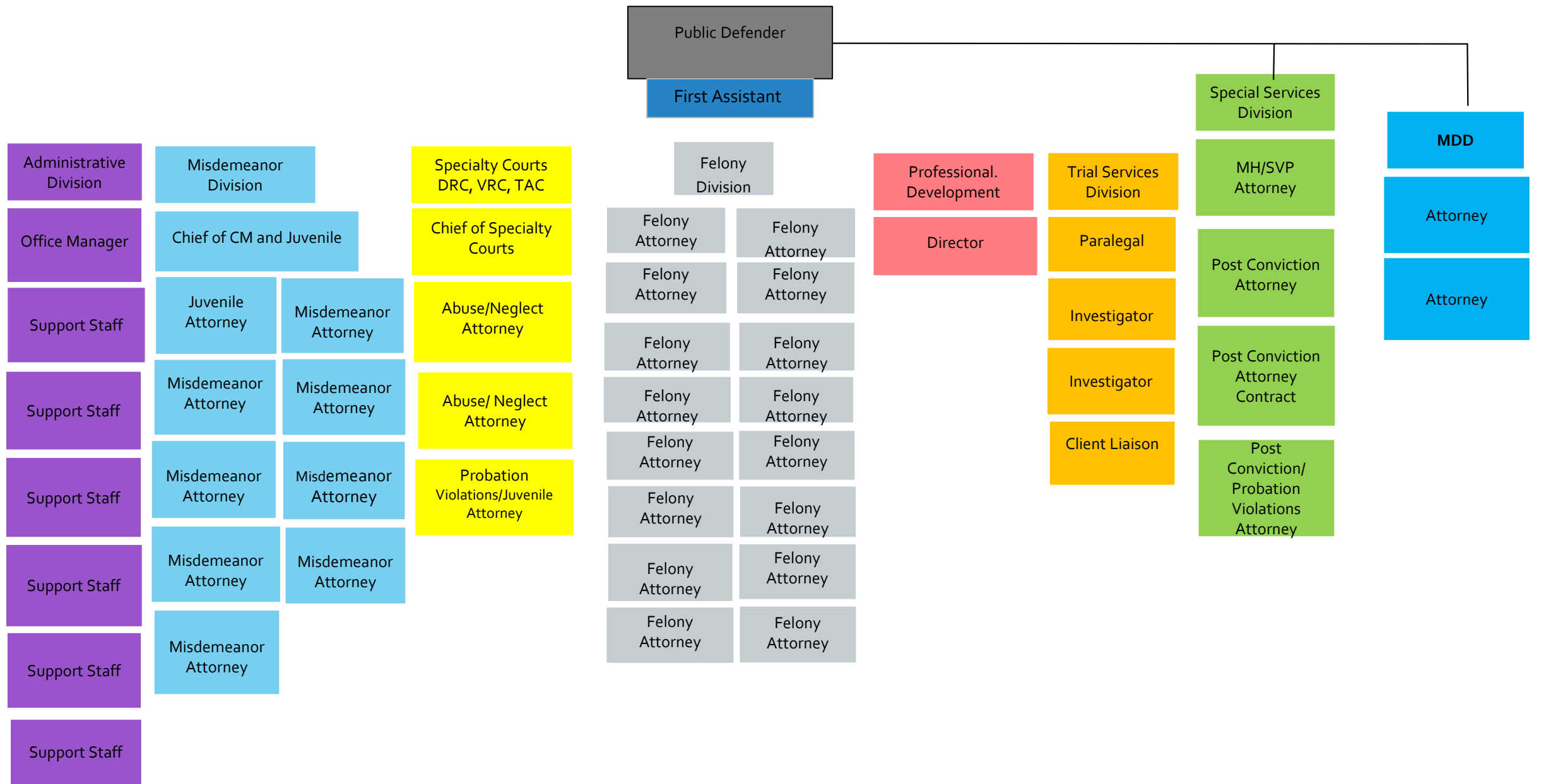


PUBLIC DEFENDER FY2022 BUDGET





OPENED & CLOSED FILES



Case Category Breakdown Opened

Case Type	2020	2021 12-1-20 to 8-11-21
Felony	2674	1570
Misdemeanor	1845	1242
Traffic	1753	1702
DUI	339	298
Mental Health	177	118
Juvenile	361	190
Abuse & Neglect	190	112
Contempt	9	2
Post-Conviction	16	8
Sexually Violent Person	2	1
Extradition	17	6
Petition to Violate Probation	990	376

Office or Department Name:		Public Defender						
Fund/Dept/Sub-Dept:		001.360.360						
		2022 Proposed Budget						
	2021 Amended Budget	Change in Existing Revenue & Expenses		New Revenues & Expenses	COVID Related Expenses	Eliminated Revenues & Expenses	Total	Comment
Total Revenue Budget	\$ 172,417	\$ (35,356)	-20.51%	\$ -	\$ -	\$ -	\$ 137,061	Transfer not repeated in FY22
Personnel Expense								
Headcount	49.00	-	0.00%	-	-	-	49.00	One position added to budget mid 2021
Union Wages	\$ 244,397	\$ 31,506	12.89%	\$ -	\$ -	\$ -	\$ 275,903	
Non-Union Salary & Wages	\$ 3,130,109	\$ 294,129	9.40%	\$ -	\$ -	\$ -	\$ 3,424,238	2% non-union increase (\$61,732) & additional 7.5% non-union increase (\$231,496)+ payroll accrual+ bond call
Benefits	\$ 711,396	\$ 58,709	8.25%	\$ -	\$ -	\$ -	\$ 770,105	
Total Payroll Expense	\$ 4,085,902	\$ 384,344	9.41%	\$ -	\$ -	\$ -	\$ 4,470,246	
Non-Payroll Expense								
Contractual Expense	\$ 101,550	\$ 385	0.38%	\$ -	\$ -	\$ -	101,935	Increase in Attorney Association dues
Commodities Expense	\$ 73,400	\$ 2,248	3.06%	\$ -	\$ 180	\$ -	75,828	Increase in books & subscriptions. COVID related expense for Zoom
Capital Expense			0.00%	\$ -	\$ -	\$ -	-	
Total Non-Payroll Expense	\$ 174,950	\$ 2,633	1.51%	\$ -	\$ 180	\$ -	177,763	
Total Expense Budget	\$ 4,260,852	\$ 386,977	9.08%	\$ -	\$ 180	\$ -	4,648,009	

Office or Department Name:		Public Defender Rec Automation						
Fund/Dept/Sub-Dept:		244.360.362						
		2022 Proposed Budget						
	2021 Amended Budget	Change in Existing Revenue & Expenses		New Revenues & Expenses	COVID Related Expenses	Eliminated Revenues & Expenses	Total	Comment
Total Revenue Budget	\$ 1,000	\$ -	0.00%	\$ -	\$ -	\$ -	\$ 1,000	
Personnel Expense								
Headcount	-	-	0.00%	-	-	-	-	
Union Wages	\$ -	\$ -	0.00%	\$ -	\$ -	\$ -	\$ -	
Non-Union Salary & Wages	\$ -	\$ -	0.00%	\$ -	\$ -	\$ -	\$ -	
Benefits	\$ -	\$ -	0.00%	\$ -	\$ -	\$ -	\$ -	
Total Payroll Expense	\$ -	\$ -	0.00%	\$ -	\$ -	\$ -	\$ -	
Non-Payroll Expense								
Contractual Expense	\$ 1,000	\$ -	0.00%	\$ -	\$ -	\$ -	1,000	
Commodities Expense	\$ -	\$ -	0.00%	\$ -	\$ -	\$ -	-	
Capital Expense			0.00%	\$ -	\$ -	\$ -	-	
Total Non-Payroll Expense	\$ 1,000	\$ -	0.00%	\$ -	\$ -	\$ -	1,000	
Total Expense Budget	\$ 1,000	\$ -	0.00%	\$ -	\$ -	\$ -	1,000	

SALARIES

POSITION	STARTING SALARY
KANE ASSISTANT SA	59,000
KANE JUDICIAL STAFF ATTORNEY	56,500
KANE ASSISTANT PD	54,000

AVERAGE ASSISTANT PD SALARIES

BAR ADMISSION	LAKE	WILL	KANE
1989-2000	114,270	92,966	80,629
2001-2010	93,204	86,549	76,625
2011-2019	69,338	60,180	63,155

Lake County has 10 Assistant PDs making more than \$100,000

Will County has 5 Assistant PDs making more than \$100,000

Kane County has 1 Assistant PD making more than \$100,000

AVERAGE KANE COUNTY SALARIES

BAR ADMISSION	KANE ASSISTANT SA	KANE ASSISTANT PD
1989-2000	97,306	86,100
2001-2010	95,032	79,328
2011-2016	70,717	64,410
2017-2020	60,888	55,180

State's Attorney has 9 attorneys making at least \$100,000

Public Defender has 1 attorney making at least \$100,000

QUESTIONS?