

FOR IMMEDIATE RELEASE:

Sept. 2, 2022



CONTACT:

Laurie Metanchuk, Director of Community Affairs
Brittany Kovach, Communications & Marketing Coordinator
630-232-5980 forestpreserve@kaneforest.com

Forest Preserve District of Kane County
1996 S. Kirk Rd., Ste. 320, Geneva, IL 60134
www.kaneforest.com

Forest Preserve hosts open house for residents to share comments regarding improvements to Mill Creek Greenway Forest Preserve

GENEVA, IL — Share your thoughts about the proposed redevelopment plans for Mill Creek Greenway Forest Preserve at a public informational meeting on Wednesday, Sept. 7, from 4-6 p.m. at the Natural Resource Management facility.

The District plans to submit an application to the Illinois Department of Natural Resources for projects as part of their Open Space Land Acquisition & Development program.

The proposed plan includes a multi-skill level archery range, shelter, restroom, parking lot and interpretive nature trails. Two plans (Option A and Option B) will be available for mark-up at the meeting, and the public is encouraged to share their comments. Public comment will also be accepted online at: https://bit.ly/PIM_Comments through Sept. 7, 2022.



“This project is a perfect example of how the District can create wildlife habitat and new opportunities for recreation by retiring farmland. Archery is a growing sport and we plan to provide a course that caters

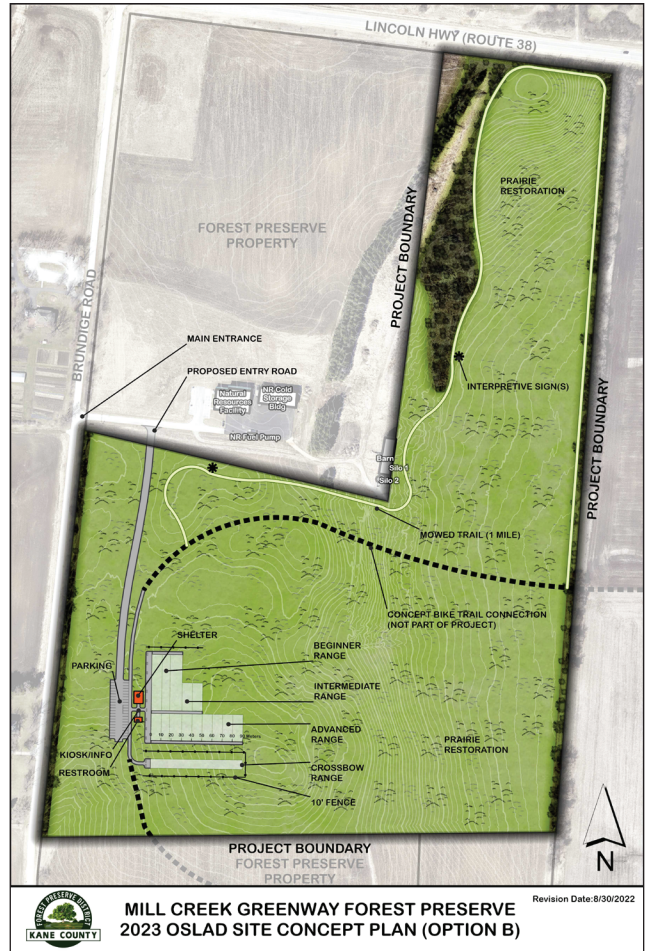
— ADD ONE —

Forest Preserve hosts open house for residents to share comments regarding improvements to Mill Creek Greenway Forest Preserve
FOR IMMEDIATE RELEASE: Sept. 2, 2022

to all skill levels and bow types,” said Landscape Architect Zach Tegge.

District staff will be available to answer questions at the meeting. The Natural Resource Management facility is located within Mill Creek Greenway Forest Preserve at 2N253 Brundige Rd., Elburn, IL 60119.

For directions to the meeting location, or other questions, please call the Forest Preserve District of Kane County Administrative Headquarters office at 630-232-5980.



###